

IHH Antibody (C-term)
Purified Rabbit Polyclonal Antibody (Pab)
Catalog # AP21524b

Specification

IHH Antibody (C-term) - Product Information

Application	WB,E
Primary Accession	Q14623
Reactivity	Human
Host	Rabbit
Clonality	polyclonal
Isotype	Rabbit IgG
Calculated MW	45251

IHH Antibody (C-term) - Additional Information

Gene ID 3549

Other Names

Indian hedgehog protein, IHH, HHG-2, Indian hedgehog protein N-product, Indian hedgehog protein C-product, IHH

Target/Specificity

This IHH antibody is generated from a rabbit immunized with a KLH conjugated synthetic peptide between 248-281 amino acids from the C-terminal region of human IHH.

Dilution

WB~~1:2000

Format

Purified polyclonal antibody supplied in PBS with 0.09% (W/V) sodium azide. This antibody is purified through a protein A column, followed by peptide affinity purification.

Storage

Maintain refrigerated at 2-8°C for up to 2 weeks. For long term storage store at -20°C in small aliquots to prevent freeze-thaw cycles.

Precautions

IHH Antibody (C-term) is for research use only and not for use in diagnostic or therapeutic procedures.

IHH Antibody (C-term) - Protein Information

Name IHH ([HGNC:5956](#))

Function [Indian hedgehog protein]: The C-terminal part of the indian hedgehog protein precursor displays an autoproteolysis and a cholesterol transferase activity (By similarity). Both activities result in the cleavage of the full-length protein into two parts followed by the covalent attachment

of a cholesterol moiety to the C- terminal of the newly generated N-product (By similarity). Both activities occur in the reticulum endoplasmic (By similarity). Plays a role in hedgehog paracrine signaling (PubMed:[24342078](#)). Associated with the very-low-density lipoprotein (VLDL) particles to function as a circulating morphogen for endothelial cell integrity maintenance (PubMed:[20839884](#)).

Cellular Location

[Indian hedgehog protein N-product]: Cell membrane; Lipid-anchor {ECO:0000250|UniProtKB:Q62226}. Note=The N-product remains associated with the cell surface. {ECO:0000250|UniProtKB:Q15465}

Tissue Location

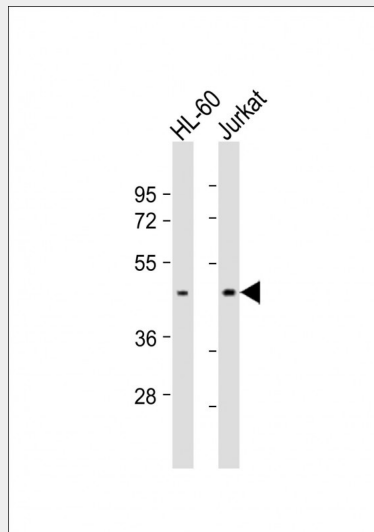
Expressed in embryonic lung, and in adult kidney and liver

IHH Antibody (C-term) - Protocols

Provided below are standard protocols that you may find useful for product applications.

- [Western Blot](#)
- [Blocking Peptides](#)
- [Dot Blot](#)
- [Immunohistochemistry](#)
- [Immunofluorescence](#)
- [Immunoprecipitation](#)
- [Flow Cytometry](#)
- [Cell Culture](#)

IHH Antibody (C-term) - Images



All lanes : Anti-IHH Antibody (C-term) at 1:2000 dilution Lane 1: HL-60 whole cell lysates Lane 2: Jurkat whole cell lysates Lysates/proteins at 20 µg per lane. Secondary Goat Anti-Rabbit IgG, (H+L), Peroxidase conjugated at 1/10000 dilution Predicted band size : 45 kDa Blocking/Dilution buffer: 5% NFDN/TBST.

IHH Antibody (C-term) - Background

Intercellular signal essential for a variety of patterning events during development. Binds to the

patched (PTC) receptor, which functions in association with smoothened (SMO), to activate the transcription of target genes. Implicated in endochondral ossification: may regulate the balance between growth and ossification of the developing bones. Induces the expression of parathyroid hormone-related protein (PTHrP) (By similarity).

IHH Antibody (C-term) - References

- Tate G., et al. J. Biochem. Mol. Biol. Biophys. 4:27-34(2000).
Mural R.J., et al. Submitted (JUL-2005) to the EMBL/GenBank/DDBJ databases.
Marigo V., et al. Genomics 28:44-51(1995).
Chang D.T., et al. Development 120:3339-3353(1994).
Pepinsky R.B., et al. J. Biol. Chem. 273:14037-14045(1998).