

**ANP32E Antibody (N-term)**  
**Purified Rabbit Polyclonal Antibody (Pab)**  
**Catalog # AP21521a****Specification**

---

**ANP32E Antibody (N-term) - Product Information**

Application	<b>WB,E</b>
Primary Accession	<a href="#">O9BTT0</a>
Reactivity	<b>Human</b>
Host	<b>Rabbit</b>
Clonality	<b>polyclonal</b>
Isotype	<b>Rabbit IgG</b>
Calculated MW	<b>30692</b>

**ANP32E Antibody (N-term) - Additional Information****Gene ID** 81611**Other Names**

Acidic leucine-rich nuclear phosphoprotein 32 family member E, LANP-like protein, LANP-L, ANP32E

**Target/Specificity**

This ANP32E antibody is generated from a rabbit immunized with a KLH conjugated synthetic peptide between 31-64 amino acids from the N-terminal region of human ANP32E.

**Dilution**

WB~~1:2000

**Format**

Purified polyclonal antibody supplied in PBS with 0.09% (W/V) sodium azide. This antibody is purified through a protein A column, followed by peptide affinity purification.

**Storage**

Maintain refrigerated at 2-8°C for up to 2 weeks. For long term storage store at -20°C in small aliquots to prevent freeze-thaw cycles.

**Precautions**

ANP32E Antibody (N-term) is for research use only and not for use in diagnostic or therapeutic procedures.

**ANP32E Antibody (N-term) - Protein Information****Name** ANP32E**Function** Histone chaperone that specifically mediates the genome-wide removal of histone H2A.Z/H2AZ1 from the nucleosome: removes H2A.Z/H2AZ1 from its normal sites of deposition, especially from enhancer and insulator regions. Not involved in deposition of H2A.Z/H2AZ1 in the nucleosome. May stabilize the evicted H2A.Z/H2AZ1-H2B dimer, thus shifting the equilibrium

towards dissociation and the off-chromatin state (PubMed:[24463511](#)). Inhibits activity of protein phosphatase 2A (PP2A). Does not inhibit protein phosphatase 1. May play a role in cerebellar development and synaptogenesis.

#### Cellular Location

Cytoplasm. Nucleus.

#### Tissue Location

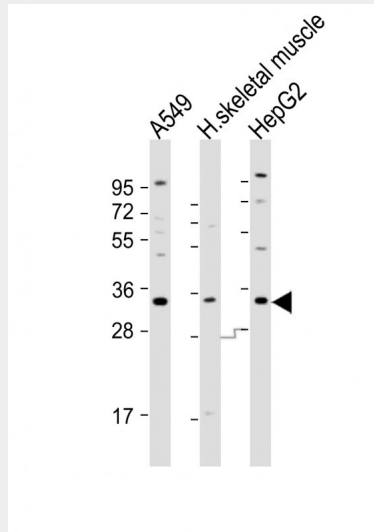
Expressed in peripheral blood leukocytes, colon, small intestine, prostate, thymus, spleen, skeletal muscle, liver and kidney.

### ANP32E Antibody (N-term) - Protocols

Provided below are standard protocols that you may find useful for product applications.

- [Western Blot](#)
- [Blocking Peptides](#)
- [Dot Blot](#)
- [Immunohistochemistry](#)
- [Immunofluorescence](#)
- [Immunoprecipitation](#)
- [Flow Cytometry](#)
- [Cell Culture](#)

### ANP32E Antibody (N-term) - Images



All lanes : Anti-ANP32E Antibody (N-term) at 1:2000 dilution Lane 1: A549 whole cell lysates Lane 2: human skeletal muscle lysates Lane 3: HepG2 whole cell lysates Lysates/proteins at 20 µg per lane. Secondary Goat Anti-Rabbit IgG, (H+L), Peroxidase conjugated at 1/10000 dilution Predicted band size : 31 kDa Blocking/Dilution buffer: 5% NFDM/TBST.

### ANP32E Antibody (N-term) - Background

Histone chaperone that specifically mediates the genome- wide removal of histone H2A.Z/H2AFZ from the nucleosome: removes H2A.Z/H2AFZ from its normal sites of deposition, especially from enhancer and insulator regions. Not involved in deposition of H2A.Z/H2AFZ in the nucleosome. May stabilize the evicted H2A.Z/H2AFZ-H2B dimer, thus shifting the equilibrium towards dissociation and

the off-chromatin state (PubMed:24463511). Inhibits activity of protein phosphatase 2A (PP2A). Does not inhibit protein phosphatase 1. May play a role in cerebellar development and synaptogenesis.

#### **ANP32E Antibody (N-term) - References**

Jiang M., et al. Cytogenet. Genome Res. 97:68-71(2002).

Ota T., et al. Nat. Genet. 36:40-45(2004).

Bechtel S., et al. BMC Genomics 8:399-399(2007).

Gregory S.G., et al. Nature 441:315-321(2006).

Mural R.J., et al. Submitted (SEP-2005) to the EMBL/GenBank/DDBJ databases.