

**ADAMTS17 Antibody (Center)**  
**Purified Rabbit Polyclonal Antibody (Pab)**  
**Catalog # AP21516c**

**Specification**

---

**ADAMTS17 Antibody (Center) - Product Information**

Application	<b>WB, IHC-P,E</b>
Primary Accession	<a href="#">Q8TE56</a>
Reactivity	<b>Human</b>
Host	<b>Rabbit</b>
Clonality	<b>polyclonal</b>
Isotype	<b>Rabbit IgG</b>

**ADAMTS17 Antibody (Center) - Additional Information**

**Gene ID** 170691

**Other Names**

A disintegrin and metalloproteinase with thrombospondin motifs 17, ADAM-TS 17, ADAM-TS17, ADAMTS-17, 3424-, ADAMTS17

**Target/Specificity**

This ADAMTS17 antibody is generated from a rabbit immunized with a KLH conjugated synthetic peptide between 508-540 amino acids from the Central region of human ADAMTS17.

**Dilution**

WB~~1:1000  
IHC-P~~1:100

**Format**

Purified polyclonal antibody supplied in PBS with 0.09% (W/V) sodium azide. This antibody is purified through a protein A column, followed by peptide affinity purification.

**Storage**

Maintain refrigerated at 2-8°C for up to 2 weeks. For long term storage store at -20°C in small aliquots to prevent freeze-thaw cycles.

**Precautions**

ADAMTS17 Antibody (Center) is for research use only and not for use in diagnostic or therapeutic procedures.

**ADAMTS17 Antibody (Center) - Protein Information**

**Name** ADAMTS17

**Cellular Location**

Secreted, extracellular space, extracellular matrix

### Tissue Location

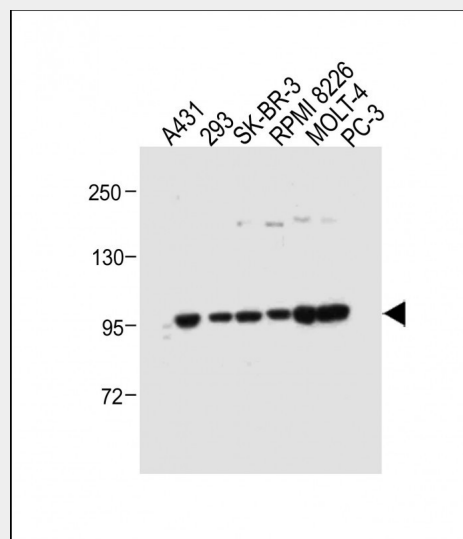
Isoform 1 and isoform 2 are expressed at high levels in the lung, brain, whole eye and retina. Isoform 1 shows a weaker expression in the heart, kidney and skeletal muscle. Isoform 2 shows a weaker expression in the kidney, bone marrow and skeletal muscle. Isoform 1 and isoform 2 are expressed at high levels in the fetal heart, kidney, and whole eye, whereas a weak expression is seen in the fetal liver.

### ADAMTS17 Antibody (Center) - Protocols

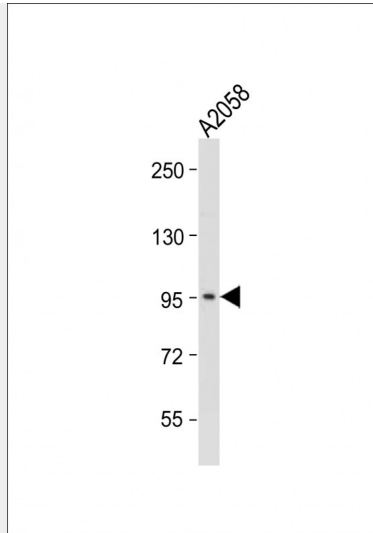
Provided below are standard protocols that you may find useful for product applications.

- [Western Blot](#)
- [Blocking Peptides](#)
- [Dot Blot](#)
- [Immunohistochemistry](#)
- [Immunofluorescence](#)
- [Immunoprecipitation](#)
- [Flow Cytometry](#)
- [Cell Culture](#)

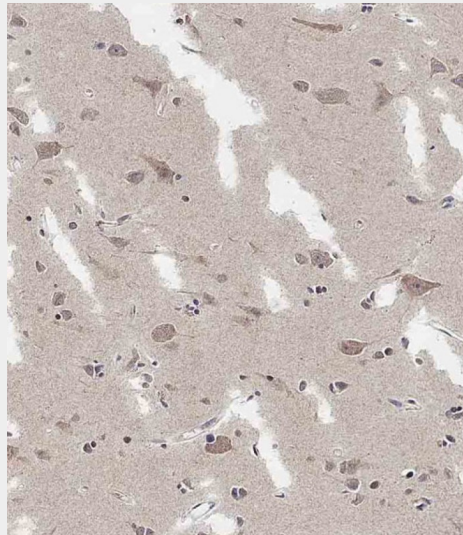
### ADAMTS17 Antibody (Center) - Images



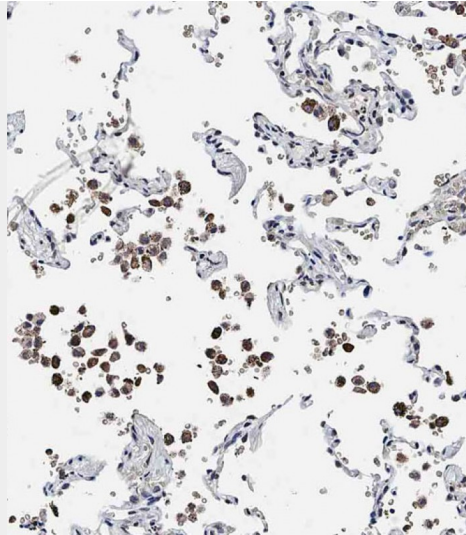
All lanes : Anti-ADAMTS17 Antibody (Center) at 1:500 dilution Lane 1: A431 whole cell lysate Lane 2: 293 whole cell lysate Lane 3: SK-BR-3 whole cell lysate Lane 4: RPMI 8226 whole cell lysate Lane 5: MOLT-4 whole cell lysate Lane 6: PC-3 whole cell lysate Lysates/proteins at 20  $\mu$ g per lane. Secondary Goat Anti-Rabbit IgG, (H+L), Peroxidase conjugated at 1/10000 dilution. Predicted band size : 121 kDa Blocking/Dilution buffer: 5% NFDM/TBST.



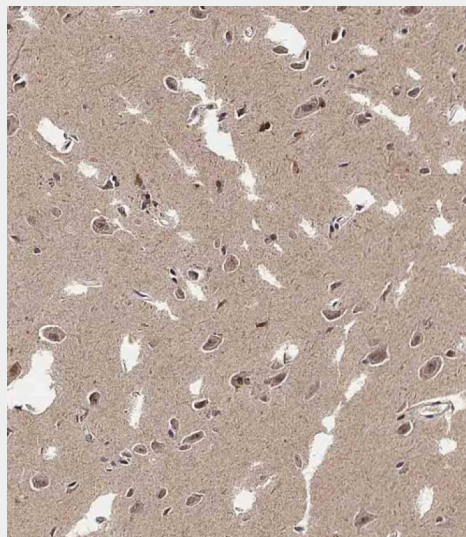
Anti-ADAMTS17 Antibody (Center) at 1:1000 dilution + A2058 whole cell lysate Lysates/proteins at 20 µg per lane. Secondary Goat Anti-Rabbit IgG, (H+L), Peroxidase conjugated at 1/10000 dilution. Predicted band size : 121 kDa Blocking/Dilution buffer: 5% NFDM/TBST.



Immunohistochemical analysis of AP21516c on paraffin-embedded Human brain tissue. Tissue was fixed with formaldehyde at room temperature. Heat induced epitope retrieval was performed by EDTA buffer (pH9. 0). Samples were incubated with primary antibody(1:100) for 1 hour at room temperature. Undiluted CRF Anti-Polyvalent HRP Polymer antibody was used as the secondary antibody.



Immunohistochemical analysis of AP21516c on paraffin-embedded Human lung tissue. Tissue was fixed with formaldehyde at room temperature. Heat induced epitope retrieval was performed by EDTA buffer (pH9. 0). Samples were incubated with primary antibody(1:100) for 1 hour at room temperature. Undiluted CRF Anti-Polyvalent HRP Polymer antibody was used as the secondary antibody.



Immunohistochemical analysis of AP21516c on paraffin-embedded Human brain tissue. Tissue was fixed with formaldehyde at room temperature. Heat induced epitope retrieval was performed by EDTA buffer (pH9. 0). Samples were incubated with primary antibody(1:100) for 1 hour at room temperature. Undiluted CRF Anti-Polyvalent HRP Polymer antibody was used as the secondary antibody.

#### **ADAMTS17 Antibody (Center) - References**

- Cal S.,et al.Gene 283:49-62(2002).  
Tan J.,et al.Submitted (SEP-2005) to the EMBL/GenBank/DDBJ databases.  
Ota T.,et al.Nat. Genet. 36:40-45(2004).  
Zody M.C.,et al.Nature 440:671-675(2006).  
Morales J.,et al.Am. J. Hum. Genet. 85:558-568(2009).

#### **ADAMTS17 Antibody (Center) - Citations**

- [Unusual life cycle and impact on microfibril assembly of ADAMTS17, a secreted](#)

[metalloprotease mutated in genetic eye disease.](#)