

IQSEC2 Antibody (Center)
Purified Rabbit Polyclonal Antibody (Pab)
Catalog # AP21510c**Specification**

IQSEC2 Antibody (Center) - Product Information

Application	WB,E
Primary Accession	O5JU85
Reactivity	Human
Host	Rabbit
Clonality	polyclonal
Isotype	Rabbit IgG
Calculated MW	162784

IQSEC2 Antibody (Center) - Additional Information**Gene ID** 23096**Other Names**

IQ motif and SEC7 domain-containing protein 2, IQSEC2, KIAA0522

Target/Specificity

This IQSEC2 antibody is generated from a rabbit immunized with a KLH conjugated synthetic peptide between 451-484 amino acids from the Central region of human IQSEC2.

Dilution

WB~~1:2000

Format

Purified polyclonal antibody supplied in PBS with 0.09% (W/V) sodium azide. This antibody is purified through a protein A column, followed by peptide affinity purification.

Storage

Maintain refrigerated at 2-8°C for up to 2 weeks. For long term storage store at -20°C in small aliquots to prevent freeze-thaw cycles.

Precautions

IQSEC2 Antibody (Center) is for research use only and not for use in diagnostic or therapeutic procedures.

IQSEC2 Antibody (Center) - Protein Information**Name** IQSEC2**Synonyms** KIAA0522**Function** Is a guanine nucleotide exchange factor for the ARF GTP- binding proteins.

Cellular Location

Cytoplasm.

Tissue Location

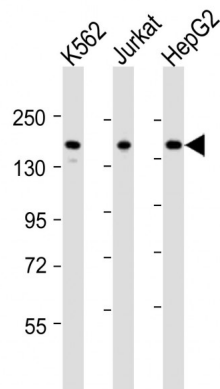
Expressed in brain, kidney and small intestine. Weakly expressed in placenta, pancreas, ovary, prostate and liver

IQSEC2 Antibody (Center) - Protocols

Provided below are standard protocols that you may find useful for product applications.

- [Western Blot](#)
- [Blocking Peptides](#)
- [Dot Blot](#)
- [Immunohistochemistry](#)
- [Immunofluorescence](#)
- [Immunoprecipitation](#)
- [Flow Cytometry](#)
- [Cell Culture](#)

IQSEC2 Antibody (Center) - Images



All lanes : Anti-IQSEC2 Antibody (Center) at 1:2000 dilution Lane 1: K562 whole cell lysates Lane 2: Jurkat whole cell lysates Lane 3: HepG2 whole cell lysates Lysates/proteins at 20 µg per lane. Secondary Goat Anti-Rabbit IgG, (H+L), Peroxidase conjugated at 1/10000 dilution Predicted band size : 162 kDa Blocking/Dilution buffer: 5% NFDM/TBST.

IQSEC2 Antibody (Center) - References

- Nagase T.,et al.DNA Res. 5:31-39(1998).
Ota T.,et al.Nat. Genet. 36:40-45(2004).
Ross M.T.,et al.Nature 434:325-337(2005).
Shapovalova Z.,et al.Submitted (AUG-2008) to the EMBL/GenBank/DDBJ databases.
Rigbolt K.T.,et al.Sci. Signal. 4:RS3-RS3(2011).