

BCL9 Antibody (N-Term)
Purified Rabbit Polyclonal Antibody (Pab)
Catalog # AP21507a

Specification

BCL9 Antibody (N-Term) - Product Information

Application	IF, WB,E
Primary Accession	O00512
Reactivity	Human, Mouse
Host	Rabbit
Clonality	polyclonal
Isotype	Rabbit IgG
Calculated MW	149290
Antigen Region	272-304

BCL9 Antibody (N-Term) - Additional Information

Gene ID 607

Other Names

B-cell CLL/lymphoma 9 protein, B-cell lymphoma 9 protein, Bcl-9, Protein legless homolog, BCL9

Target/Specificity

This BCL9 antibody is generated from a rabbit immunized with a KLH conjugated synthetic peptide between 272-304 amino acids from human BCL9.

Dilution

IF~~1:25

WB~~1:2000

Format

Purified polyclonal antibody supplied in PBS with 0.09% (W/V) sodium azide. This antibody is purified through a protein A column, followed by peptide affinity purification.

Storage

Maintain refrigerated at 2-8°C for up to 2 weeks. For long term storage store at -20°C in small aliquots to prevent freeze-thaw cycles.

Precautions

BCL9 Antibody (N-Term) is for research use only and not for use in diagnostic or therapeutic procedures.

BCL9 Antibody (N-Term) - Protein Information

Name BCL9

Function Involved in signal transduction through the Wnt pathway. Promotes beta-catenin's transcriptional activity (By similarity).

Cellular Location

Nucleus.

Tissue Location

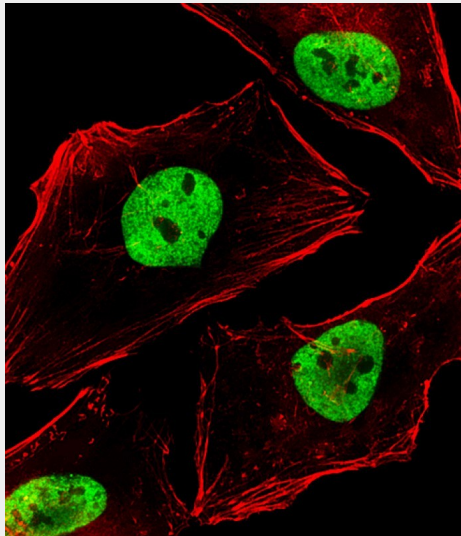
Detected at low levels in thymus, prostate, testis, ovary and small intestine, and at lower levels in spleen, colon and blood

BCL9 Antibody (N-Term) - Protocols

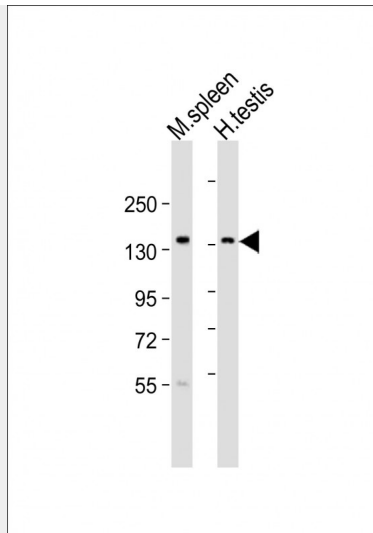
Provided below are standard protocols that you may find useful for product applications.

- [Western Blot](#)
- [Blocking Peptides](#)
- [Dot Blot](#)
- [Immunohistochemistry](#)
- [Immunofluorescence](#)
- [Immunoprecipitation](#)
- [Flow Cytometry](#)
- [Cell Culture](#)

BCL9 Antibody (N-Term) - Images



Immunofluorescent analysis of 4% paraformaldehyde-fixed, 0.1% Triton X-100 permeabilized HeLa (human cervical epithelial adenocarcinoma cell line) cells labeling BCL9 with AP21507a at 1/25 dilution, followed by Dylight® 488-conjugated goat anti-rabbit IgG (NK179883) secondary antibody at 1/200 dilution (green). Immunofluorescence image showing nucleus staining on HeLa cell line. Cytoplasmic actin is detected with Dylight® 554 Phalloidin (PD18466410) at 1/100 dilution (red).



All lanes : Anti-BCL9 Antibody (N-Term) at 1:2000 dilution Lane 1: mouse spleen lysates Lane 2: human testis lysates Lysates/proteins at 20 µg per lane. Secondary Goat Anti-Rabbit IgG, (H+L), Peroxidase conjugated at 1/10000 dilution Predicted band size : 149 kDa Blocking/Dilution buffer: 5% NFDM/TBST.

BCL9 Antibody (N-Term) - Background

Involved in signal transduction through the Wnt pathway. Promotes beta-catenin's transcriptional activity (By similarity).

BCL9 Antibody (N-Term) - References

Willis T.G.,et al.Blood 91:1873-1881(1998).
Gregory S.G.,et al.Nature 441:315-321(2006).
Mural R.J.,et al.Submitted (JUL-2005) to the EMBL/GenBank/DDBJ databases.
Kramps T.,et al.Cell 109:47-60(2002).
Matsuoka S.,et al.Science 316:1160-1166(2007).