

PPP2R5E Antibody (C-term)
Purified Rabbit Polyclonal Antibody (Pab)
Catalog # AP21502b

Specification

PPP2R5E Antibody (C-term) - Product Information

Application	WB,E
Primary Accession	Q16537
Reactivity	Human
Host	Rabbit
Clonality	polyclonal
Isotype	Rabbit IgG
Calculated MW	54699

PPP2R5E Antibody (C-term) - Additional Information

Gene ID 5529

Other Names

Serine/threonine-protein phosphatase 2A 56 kDa regulatory subunit epsilon isoform, PP2A B subunit isoform B'-epsilon, PP2A B subunit isoform B56-epsilon, PP2A B subunit isoform PR61-epsilon, PP2A B subunit isoform R5-epsilon, PPP2R5E

Target/Specificity

This PPP2R5E antibody is generated from a rabbit immunized with a KLH conjugated synthetic peptide between 448-482 amino acids from the C-terminal region of human PPP2R5E.

Dilution

WB~~1:2000

Format

Purified polyclonal antibody supplied in PBS with 0.09% (W/V) sodium azide. This antibody is purified through a protein A column, followed by peptide affinity purification.

Storage

Maintain refrigerated at 2-8°C for up to 2 weeks. For long term storage store at -20°C in small aliquots to prevent freeze-thaw cycles.

Precautions

PPP2R5E Antibody (C-term) is for research use only and not for use in diagnostic or therapeutic procedures.

PPP2R5E Antibody (C-term) - Protein Information

Name PPP2R5E

Function The B regulatory subunit might modulate substrate selectivity and catalytic activity, and also might direct the localization of the catalytic enzyme to a particular subcellular compartment.

Cellular Location

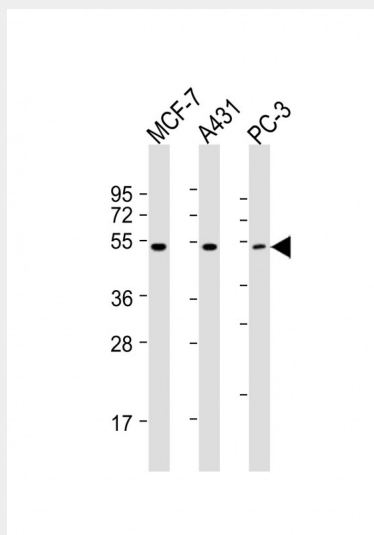
Cytoplasm.

PPP2R5E Antibody (C-term) - Protocols

Provided below are standard protocols that you may find useful for product applications.

- [Western Blot](#)
- [Blocking Peptides](#)
- [Dot Blot](#)
- [Immunohistochemistry](#)
- [Immunofluorescence](#)
- [Immunoprecipitation](#)
- [Flow Cytometry](#)
- [Cell Culture](#)

PPP2R5E Antibody (C-term) - Images



All lanes : Anti-PPP2R5E Antibody (C-term) at 1:2000 dilution Lane 1: MCF-7 whole cell lysates Lane 2: A431 whole cell lysates Lane 3: PC-3 whole cell lysates Lysates/proteins at 20 µg per lane. Secondary Goat Anti-Rabbit IgG, (H+L), Peroxidase conjugated at 1/10000 dilution Predicted band size : 55 kDa Blocking/Dilution buffer: 5% NFD/MTBST.

PPP2R5E Antibody (C-term) - Background

The B regulatory subunit might modulate substrate selectivity and catalytic activity, and also might direct the localization of the catalytic enzyme to a particular subcellular compartment.

PPP2R5E Antibody (C-term) - References

- Zolnierowicz S., et al. *Biochem. J.* 317:187-194(1996).
McCright B., et al. *J. Biol. Chem.* 271:22081-22089(1996).
Ota T., et al. *Nat. Genet.* 36:40-45(2004).
Heilig R., et al. *Nature* 421:601-607(2003).
Kitajima T.S., et al. *Nature* 441:46-52(2006).