

SLA2 Antibody (Center)
Purified Rabbit Polyclonal Antibody (Pab)
Catalog # AP21501c

Specification

SLA2 Antibody (Center) - Product Information

Application	WB,E
Primary Accession	O9H6Q3
Reactivity	Human, Mouse
Host	Rabbit
Clonality	polyclonal
Isotype	Rabbit IgG
Calculated MW	28585

SLA2 Antibody (Center) - Additional Information

Gene ID 84174

Other Names

Src-like-adapter 2, Modulator of antigen receptor signaling, MARS, Src-like adapter protein 2, SLAP-2, SLA2, C20orf156, SLAP2

Target/Specificity

This SLA2 antibody is generated from a rabbit immunized with a KLH conjugated synthetic peptide between 138-169 amino acids from the Central region of human SLA2.

Dilution

WB~~1:2000

Format

Purified polyclonal antibody supplied in PBS with 0.09% (W/V) sodium azide. This antibody is purified through a protein A column, followed by peptide affinity purification.

Storage

Maintain refrigerated at 2-8°C for up to 2 weeks. For long term storage store at -20°C in small aliquots to prevent freeze-thaw cycles.

Precautions

SLA2 Antibody (Center) is for research use only and not for use in diagnostic or therapeutic procedures.

SLA2 Antibody (Center) - Protein Information

Name SLA2

Synonyms C20orf156, SLAP2

Function Adapter protein, which negatively regulates T-cell receptor (TCR) signaling. Inhibits

T-cell antigen-receptor induced activation of nuclear factor of activated T-cells. May act by linking signaling proteins such as ZAP70 with CBL, leading to a CBL dependent degradation of signaling proteins.

Cellular Location

Cytoplasm. [Isoform 2]: Cytoplasm. Note=May be cytoplasmic and is not localized to membranes

Tissue Location

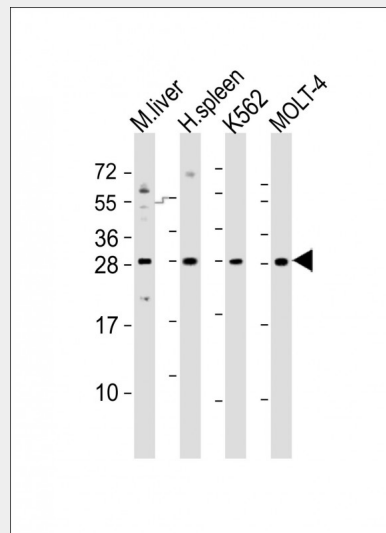
Predominantly expressed in immune system, with highest levels in peripheral blood leukocytes. Expressed in spleen, thymus and lymph nodes. Expressed in T-cells as well as in monocytes, and at low level in B-cells. Also detected in placenta, prostate, skin, retina and colon

SLA2 Antibody (Center) - Protocols

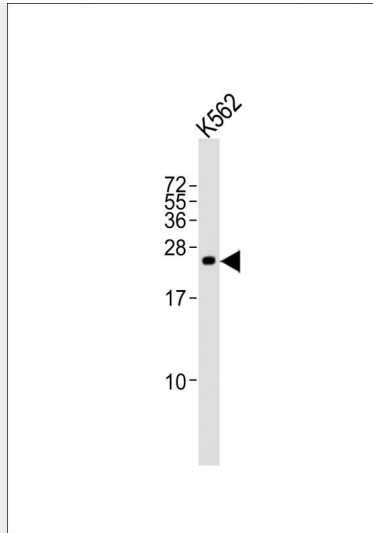
Provided below are standard protocols that you may find useful for product applications.

- [Western Blot](#)
- [Blocking Peptides](#)
- [Dot Blot](#)
- [Immunohistochemistry](#)
- [Immunofluorescence](#)
- [Immunoprecipitation](#)
- [Flow Cytometry](#)
- [Cell Culture](#)

SLA2 Antibody (Center) - Images



All lanes : Anti-SLA2 Antibody (Center) at 1:2000 dilution Lane 1: mouse liver lysates Lane 2: human spleen lysates Lane 3: K562 whole cell lysates Lane 4: MOLT-4 whole cell lysates Lysates/proteins at 20 µg per lane. Secondary Goat Anti-Rabbit IgG, (H+L), Peroxidase conjugated at 1/10000 dilution Predicted band size : 29 kDa Blocking/Dilution buffer: 5% NFDM/TBST.



Anti-SLA2 Antibody (Center) at 1:2000 dilution + K562 whole cell lysates Lysates/proteins at 20 μ g per lane. Secondary Goat Anti-Rabbit IgG, (H+L), Peroxidase conjugated at 1/10000 dilution Predicted band size : 29 kDa Blocking/Dilution buffer: 5% NFD/MTBST.

SLA2 Antibody (Center) - Background

Adapter protein, which negatively regulates T-cell receptor (TCR) signaling. Inhibits T-cell antigen-receptor induced activation of nuclear factor of activated T-cells. May act by linking signaling proteins such as ZAP70 with CBL, leading to a CBL dependent degradation of signaling proteins.

SLA2 Antibody (Center) - References

Holland S.J., et al. *J. Exp. Med.* 194:1263-1276(2001).
Loreto M.P., et al. *Oncogene* 22:266-273(2003).
Ota T., et al. *Nat. Genet.* 36:40-45(2004).
Deloukas P., et al. *Nature* 414:865-871(2001).
Mural R.J., et al. Submitted (SEP-2005) to the EMBL/GenBank/DDBJ databases.