

MYCL1 Antibody (C-Term)
Purified Rabbit Polyclonal Antibody (Pab)
Catalog # AP21488b

Specification

MYCL1 Antibody (C-Term) - Product Information

Application	WB,E
Primary Accession	P12524
Reactivity	Human
Host	Rabbit
Clonality	polyclonal
Isotype	Rabbit IgG
Calculated MW	40327

MYCL1 Antibody (C-Term) - Additional Information

Gene ID 4610

Other Names

Protein L-Myc, Class E basic helix-loop-helix protein 38, bHLHe38, Protein L-Myc-1, V-myc myelocytomatosis viral oncogene homolog, MYCL, BHLHE38, LMYC, MYCL1

Target/Specificity

This MYCL1 antibody is generated from a rabbit immunized with a KLH conjugated synthetic peptide between 271-303 amino acids from human MYCL1.

Dilution

WB~~1:2000

Format

Purified polyclonal antibody supplied in PBS with 0.09% (W/V) sodium azide. This antibody is purified through a protein A column, followed by peptide affinity purification.

Storage

Maintain refrigerated at 2-8°C for up to 2 weeks. For long term storage store at -20°C in small aliquots to prevent freeze-thaw cycles.

Precautions

MYCL1 Antibody (C-Term) is for research use only and not for use in diagnostic or therapeutic procedures.

MYCL1 Antibody (C-Term) - Protein Information

Name MYCL

Synonyms BHLHE38, LMYC, MYCL1

Cellular Location

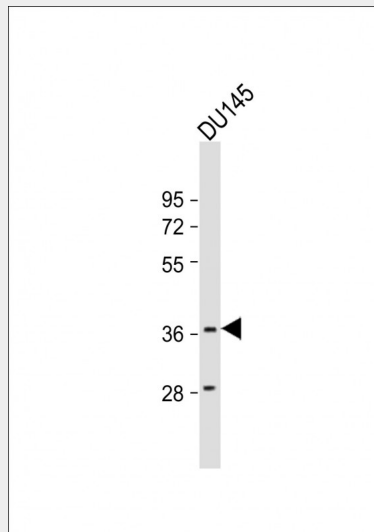
Nucleus {ECO:0000255|PROSITE-ProRule:PRU00981, ECO:0000269|PubMed:2548855}

MYCL1 Antibody (C-Term) - Protocols

Provided below are standard protocols that you may find useful for product applications.

- [Western Blot](#)
- [Blocking Peptides](#)
- [Dot Blot](#)
- [Immunohistochemistry](#)
- [Immunofluorescence](#)
- [Immunoprecipitation](#)
- [Flow Cytometry](#)
- [Cell Culture](#)

MYCL1 Antibody (C-Term) - Images



Anti-MYCL1 Antibody (C-Term) at 1:2000 dilution + DU145 whole cell lysates Lysates/proteins at 20 µg per lane. Secondary Goat Anti-Rabbit IgG, (H+L), Peroxidase conjugated at 1/10000 dilution Predicted band size : 40 kDa Blocking/Dilution buffer: 5% NFDN/TBST.

MYCL1 Antibody (C-Term) - References

- DePinho R.A., et al. *Genes Dev.* 1:1311-1326(1987).
Kaye F., et al. *Mol. Cell. Biol.* 8:186-195(1988).
Ota T., et al. *Nat. Genet.* 36:40-45(2004).
Gregory S.G., et al. *Nature* 441:315-321(2006).
Mural R.J., et al. Submitted (SEP-2005) to the EMBL/GenBank/DDBJ databases.