

**RASSF2 Antibody (Center)**  
**Purified Rabbit Polyclonal Antibody (Pab)**  
**Catalog # AP21484c**

**Specification**

---

**RASSF2 Antibody (Center) - Product Information**

Application	WB,E
Primary Accession	<a href="#">P50749</a>
Reactivity	Human, Mouse
Host	Rabbit
Clonality	polyclonal
Isotype	Rabbit IgG
Calculated MW	37790

**RASSF2 Antibody (Center) - Additional Information**

**Gene ID** 9770

**Other Names**

Ras association domain-containing protein 2, RASSF2, KIAA0168

**Target/Specificity**

This RASSF2 antibody is generated from a rabbit immunized with a KLH conjugated synthetic peptide between 123-156 amino acids from the Central region of human RASSF2.

**Dilution**

WB~~1:2000

**Format**

Purified polyclonal antibody supplied in PBS with 0.09% (W/V) sodium azide. This antibody is purified through a protein A column, followed by peptide affinity purification.

**Storage**

Maintain refrigerated at 2-8°C for up to 2 weeks. For long term storage store at -20°C in small aliquots to prevent freeze-thaw cycles.

**Precautions**

RASSF2 Antibody (Center) is for research use only and not for use in diagnostic or therapeutic procedures.

**RASSF2 Antibody (Center) - Protein Information**

**Name** RASSF2

**Synonyms** CENP-34 {ECO:0000303|PubMed:20813266}, K

**Function** Potential tumor suppressor. Acts as a KRAS-specific effector protein. May promote apoptosis and cell cycle arrest. Stabilizes STK3/MST2 by protecting it from proteasomal

degradation.

#### Cellular Location

Nucleus. Cytoplasm. Chromosome, centromere, kinetochore. Note=Translocates to the cytoplasm in the presence of STK3/MST2 and STK4/MST1

#### Tissue Location

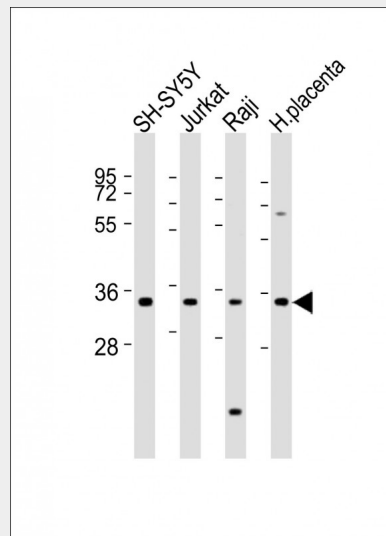
Widely expressed with highest levels in brain, placenta, peripheral blood and lung. Frequently down-regulated in lung tumor cell lines.

### RASSF2 Antibody (Center) - Protocols

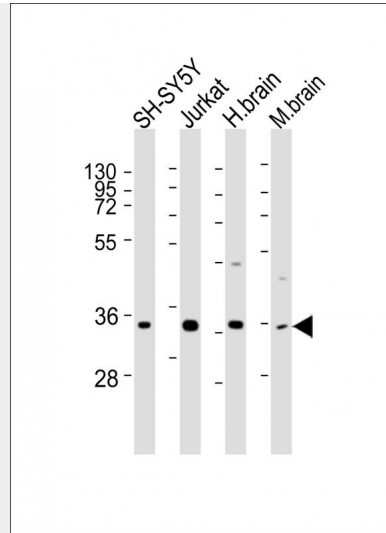
Provided below are standard protocols that you may find useful for product applications.

- [Western Blot](#)
- [Blocking Peptides](#)
- [Dot Blot](#)
- [Immunohistochemistry](#)
- [Immunofluorescence](#)
- [Immunoprecipitation](#)
- [Flow Cytometry](#)
- [Cell Culture](#)

### RASSF2 Antibody (Center) - Images



All lanes : Anti-RASSF2 Antibody (Center) at 1:2000 dilution Lane 1: SH-SY5Y whole cell lysates Lane 2: Jurkat whole cell lysates Lane 3: Raji whole cell lysates Lane 4: human placenta lysates Lysates/proteins at 20 µg per lane. Secondary Goat Anti-Rabbit IgG, (H+L), Peroxidase conjugated at 1/10000 dilution Predicted band size : 38 kDa Blocking/Dilution buffer: 5% NFDN/TBST.



All lanes : Anti-RASSF2 Antibody (Center) at 1:2000 dilution Lane 1: SH-SY5Y whole cell lysates  
 Lane 2: Jurkat whole cell lysates Lane 3: human brain lysates Lane 4: mouse brain lysates  
 Lysates/proteins at 20 µg per lane. Secondary Goat Anti-Rabbit IgG, (H+L), Peroxidase conjugated  
 at 1/10000 dilution Predicted band size : 38 kDa Blocking/Dilution buffer: 5% NFDM/TBST.

**RASSF2 Antibody (Center) - Background**

Potential tumor suppressor. Acts as a KRAS-specific effector protein. May promote apoptosis and cell cycle arrest. Stabilizes STK3/MST2 by protecting it from proteasomal degradation.

**RASSF2 Antibody (Center) - References**

Burbee D.G.,et al.Submitted (SEP-2002) to the EMBL/GenBank/DDBJ databases.  
 Nagase T.,et al.DNA Res. 3:17-24(1996).  
 Ota T.,et al.Nat. Genet. 36:40-45(2004).  
 Suzuki Y.,et al.Submitted (APR-2005) to the EMBL/GenBank/DDBJ databases.  
 Bechtel S.,et al.BMC Genomics 8:399-399(2007).