

RASSF2 Antibody (N-Term)
Purified Rabbit Polyclonal Antibody (Pab)
Catalog # AP21483a

Specification

RASSF2 Antibody (N-Term) - Product Information

Application	WB,E
Primary Accession	P50749
Reactivity	Human, Mouse
Host	Rabbit
Clonality	polyclonal
Isotype	Rabbit IgG
Calculated MW	37790

RASSF2 Antibody (N-Term) - Additional Information

Gene ID 9770

Other Names

Ras association domain-containing protein 2, RASSF2, KIAA0168

Target/Specificity

This RASSF2 antibody is generated from a rabbit immunized with a KLH conjugated synthetic peptide between 64-98 amino acids from human RASSF2.

Dilution

WB~~1:2000

Format

Purified polyclonal antibody supplied in PBS with 0.09% (W/V) sodium azide. This antibody is purified through a protein A column, followed by peptide affinity purification.

Storage

Maintain refrigerated at 2-8°C for up to 2 weeks. For long term storage store at -20°C in small aliquots to prevent freeze-thaw cycles.

Precautions

RASSF2 Antibody (N-Term) is for research use only and not for use in diagnostic or therapeutic procedures.

RASSF2 Antibody (N-Term) - Protein Information

Name RASSF2

Synonyms CENP-34 {ECO:0000303|PubMed:20813266}, K

Function Potential tumor suppressor. Acts as a KRAS-specific effector protein. May promote apoptosis and cell cycle arrest. Stabilizes STK3/MST2 by protecting it from proteasomal

degradation.

Cellular Location

Nucleus. Cytoplasm. Chromosome, centromere, kinetochore. Note=Translocates to the cytoplasm in the presence of STK3/MST2 and STK4/MST1

Tissue Location

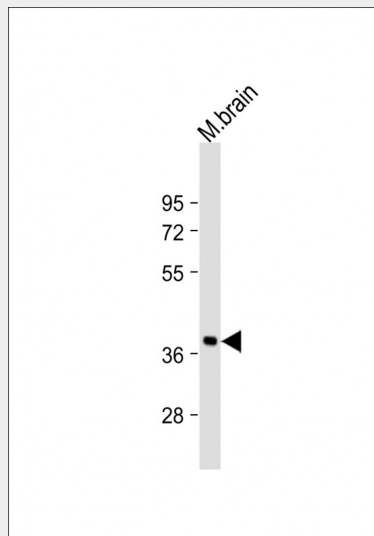
Widely expressed with highest levels in brain, placenta, peripheral blood and lung. Frequently down-regulated in lung tumor cell lines.

RASSF2 Antibody (N-Term) - Protocols

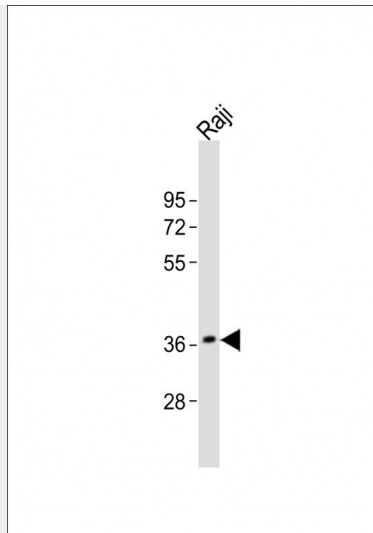
Provided below are standard protocols that you may find useful for product applications.

- [Western Blot](#)
- [Blocking Peptides](#)
- [Dot Blot](#)
- [Immunohistochemistry](#)
- [Immunofluorescence](#)
- [Immunoprecipitation](#)
- [Flow Cytometry](#)
- [Cell Culture](#)

RASSF2 Antibody (N-Term) - Images



Anti-RASSF2 Antibody (N-Term) at 1:2000 dilution + mouse brain lysates Lysates/proteins at 20 μ g per lane. Secondary Goat Anti-Rabbit IgG, (H+L), Peroxidase conjugated at 1/10000 dilution Predicted band size : 38 kDa Blocking/Dilution buffer: 5% NFDN/TBST.



Anti-RASSF2 Antibody (N-Term) at 1:2000 dilution + Raji whole cell lysates Lysates/proteins at 20 μ g per lane. Secondary Goat Anti-Rabbit IgG, (H+L), Peroxidase conjugated at 1/10000 dilution Predicted band size : 38 kDa Blocking/Dilution buffer: 5% NFDM/TBST.

RASSF2 Antibody (N-Term) - Background

Potential tumor suppressor. Acts as a KRAS-specific effector protein. May promote apoptosis and cell cycle arrest. Stabilizes STK3/MST2 by protecting it from proteasomal degradation.

RASSF2 Antibody (N-Term) - References

Burbee D.G., et al. Submitted (SEP-2002) to the EMBL/GenBank/DDBJ databases.
Nagase T., et al. DNA Res. 3:17-24(1996).
Ota T., et al. Nat. Genet. 36:40-45(2004).
Suzuki Y., et al. Submitted (APR-2005) to the EMBL/GenBank/DDBJ databases.
Bechtel S., et al. BMC Genomics 8:399-399(2007).