

SSX2 Antibody (Center)
Purified Rabbit Polyclonal Antibody (Pab)
Catalog # AP21482c**Specification**

SSX2 Antibody (Center) - Product Information

Application	WB,E
Primary Accession	Q16385
Reactivity	Human, Mouse
Host	Rabbit
Clonality	polyclonal
Isotype	Rabbit IgG
Calculated MW	21620

SSX2 Antibody (Center) - Additional Information**Gene ID** 6757;727837**Other Names**

Protein SSX2, Cancer/testis antigen 52, CT52, Synovial sarcoma, X breakpoint 2, Tumor antigen HOM-MEL-40, SSX2, SSX2A

Target/Specificity

This SSX2 antibody is generated from a rabbit immunized with a KLH conjugated synthetic peptide between 110-142 amino acids from the Central region of human SSX2.

Dilution

WB~~1:2000

Format

Purified polyclonal antibody supplied in PBS with 0.09% (W/V) sodium azide. This antibody is purified through a protein A column, followed by peptide affinity purification.

Storage

Maintain refrigerated at 2-8°C for up to 2 weeks. For long term storage store at -20°C in small aliquots to prevent freeze-thaw cycles.

Precautions

SSX2 Antibody (Center) is for research use only and not for use in diagnostic or therapeutic procedures.

SSX2 Antibody (Center) - Protein Information**Name** SSX2**Synonyms** SSX2A**Function** Could act as a modulator of transcription.

Cellular Location

Nucleus.

Tissue Location

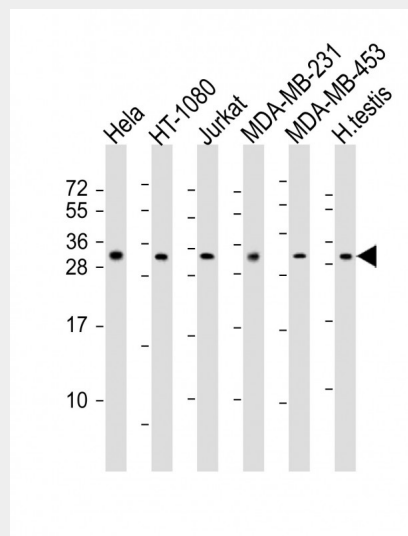
Expressed at high level in the testis. Expressed at low level in thyroid. Not detected in tonsil, colon, lung, spleen, prostate, kidney, striated and smooth muscles. Detected in rhabdomyosarcoma and fibrosarcoma cell lines. Not detected in mesenchymal and epithelial cell lines

SSX2 Antibody (Center) - Protocols

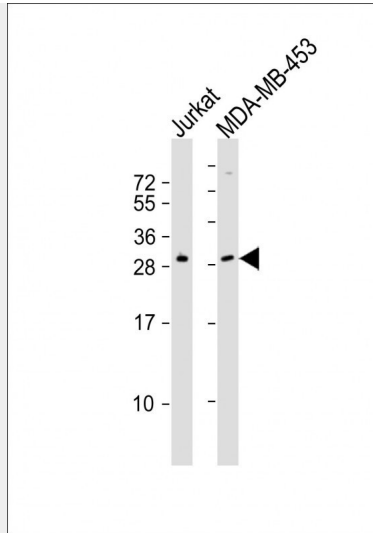
Provided below are standard protocols that you may find useful for product applications.

- [Western Blot](#)
- [Blocking Peptides](#)
- [Dot Blot](#)
- [Immunohistochemistry](#)
- [Immunofluorescence](#)
- [Immunoprecipitation](#)
- [Flow Cytometry](#)
- [Cell Culture](#)

SSX2 Antibody (Center) - Images



All lanes : Anti-SSX2 Antibody (Center) at 1:2000 dilution Lane 1: HeLa whole cell lysates Lane 2: HT-1080 whole cell lysates Lane 3: Jurkat whole cell lysates Lane 4: MDA-MB-231 whole cell lysates Lane 5: MDA-MB-453 whole cell lysates Lane 6: human testis lysates Lysates/proteins at 20 µg per lane. Secondary Goat Anti-Rabbit IgG, (H+L), Peroxidase conjugated at 1/10000 dilution Predicted band size : 22 kDa Blocking/Dilution buffer: 5% NFDM/TBST.



All lanes : Anti-SSX2 Antibody (Center) at 1:2000 dilution Lane 1: Jurkat whole cell lysates Lane 2: MDA-MB-453 whole cell lysates Lysates/proteins at 20 µg per lane. Secondary Goat Anti-Rabbit IgG, (H+L), Peroxidase conjugated at 1/10000 dilution Predicted band size : 22 kDa Blocking/Dilution buffer: 5% NFD/MTBST.

SSX2 Antibody (Center) - Background

Could act as a modulator of transcription.

SSX2 Antibody (Center) - References

- Crew A.J.,et al.EMBO J. 14:2333-2340(1995).
- Ross M.T.,et al.Nature 434:325-337(2005).
- de Leeuw B.,et al.Hum. Mol. Genet. 4:1097-1099(1995).
- Clark J.,et al.Nat. Genet. 7:502-508(1994).
- Fligman I.,et al.Am. J. Pathol. 147:1592-1599(1995).