

KIF22 Antibody (Center)
Purified Rabbit Polyclonal Antibody (Pab)
Catalog # AP21475c

Specification

KIF22 Antibody (Center) - Product Information

| | |
|-------------------|------------------------|
| Application | IF, WB, IHC-P,E |
| Primary Accession | Q14807 |
| Reactivity | Human |
| Host | Rabbit |
| Clonality | polyclonal |
| Isotype | Rabbit IgG |
| Calculated MW | 73262 |

KIF22 Antibody (Center) - Additional Information

Gene ID 3835

Other Names

Kinesin-like protein KIF22, Kinesin-like DNA-binding protein, Kinesin-like protein 4, KIF22, KID, KNSL4

Target/Specificity

This KIF22 antibody is generated from a rabbit immunized with a KLH conjugated synthetic peptide between 423-456 amino acids from the Central region of human KIF22.

Dilution

IF~~1:25
WB~~1:2000
IHC-P~~1:25

Format

Purified polyclonal antibody supplied in PBS with 0.09% (W/V) sodium azide. This antibody is purified through a protein A column, followed by peptide affinity purification.

Storage

Maintain refrigerated at 2-8°C for up to 2 weeks. For long term storage store at -20°C in small aliquots to prevent freeze-thaw cycles.

Precautions

KIF22 Antibody (Center) is for research use only and not for use in diagnostic or therapeutic procedures.

KIF22 Antibody (Center) - Protein Information

Name KIF22

Synonyms KID, KNSL4

Function Kinesin family member that is involved in spindle formation and the movements of chromosomes during mitosis and meiosis. Binds to microtubules and to DNA (By similarity). Plays a role in congression of laterally attached chromosomes in NDC80-depleted cells (PubMed:[25743205](#)).

Cellular Location

Nucleus. Cytoplasm, cytoskeleton

Tissue Location

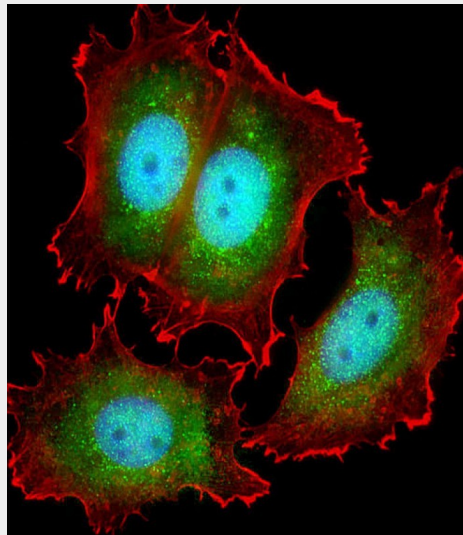
Expressed in bone, cartilage, joint capsule, ligament, skin, and primary cultured chondrocytes

KIF22 Antibody (Center) - Protocols

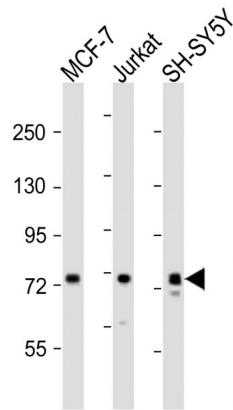
Provided below are standard protocols that you may find useful for product applications.

- [Western Blot](#)
- [Blocking Peptides](#)
- [Dot Blot](#)
- [Immunohistochemistry](#)
- [Immunofluorescence](#)
- [Immunoprecipitation](#)
- [Flow Cytometry](#)
- [Cell Culture](#)

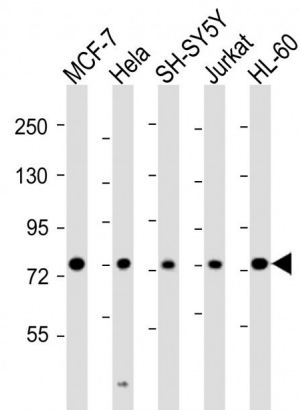
KIF22 Antibody (Center) - Images



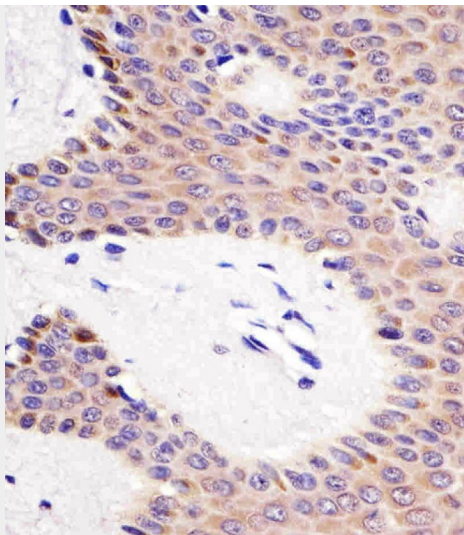
Immunofluorescent analysis of 4% paraformaldehyde-fixed, 0.1% Triton X-100 permeabilized MCF-7 (human breast cancer cell line) cells labeling KIF22 with AP21475c at 1/25 dilution, followed by Dylight® 488-conjugated goat anti-rabbit IgG (NK179883) secondary antibody at 1/200 dilution (green). Immunofluorescence image showing cytoplasm and nucleus staining on MCF-7 cell line. Cytoplasmic actin is detected with Dylight® 554 Phalloidin (PD18466410) at 1/100 dilution (red).The nuclear counter stain is DAPI (blue).



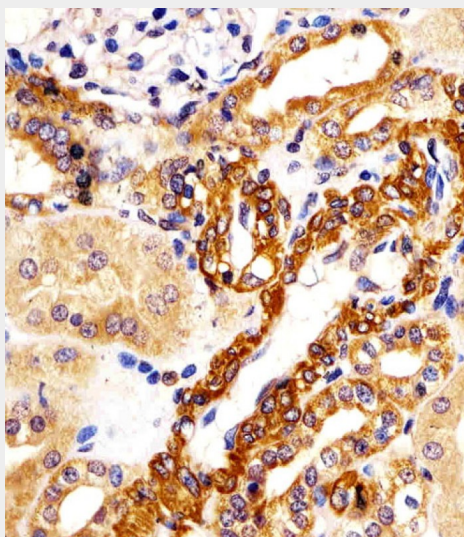
All lanes : Anti-KIF22 Antibody (Center) at 1:2000 dilution Lane 1: MCF-7 whole cell lysates Lane 2: Jurkat whole cell lysates Lane 3: SH-SY5Y whole cell lysates Lysates/proteins at 20 µg per lane. Secondary Goat Anti-Rabbit IgG, (H+L), Peroxidase conjugated at 1/10000 dilution Predicted band size : 73 kDa Blocking/Dilution buffer: 5% NFDM/TBST.



All lanes : Anti-KIF22 Antibody (Center) at 1:2000 dilution Lane 1: MCF-7 whole cell lysates Lane 2: HeLa whole cell lysates Lane 3: SH-SY5Y whole cell lysates Lane 4: Jurkat whole cell lysates Lane 5: HL-60 whole cell lysates Lysates/proteins at 20 µg per lane. Secondary Goat Anti-Rabbit IgG, (H+L), Peroxidase conjugated at 1/10000 dilution Predicted band size : 73 kDa Blocking/Dilution buffer: 5% NFDM/TBST.



AP21475c staining KIF22 in human skin tissue sections by Immunohistochemistry (IHC-P - paraformaldehyde-fixed, paraffin-embedded sections). Tissue was fixed with formaldehyde and blocked with 3% BSA for 0.5 hour at room temperature; antigen retrieval was by heat mediation with a citrate buffer (pH6). Samples were incubated with primary antibody (1/25) for 1 hour at 37°C. A undiluted biotinylated goat polyvalent antibody was used as the secondary antibody.



AP21475c staining KIF22 in human kidney tissue sections by Immunohistochemistry (IHC-P - paraformaldehyde-fixed, paraffin-embedded sections). Tissue was fixed with formaldehyde and blocked with 3% BSA for 0.5 hour at room temperature; antigen retrieval was by heat mediation with a citrate buffer (pH6). Samples were incubated with primary antibody (1/25) for 1 hour at 37°C. A undiluted biotinylated goat polyvalent antibody was used as the secondary antibody.

KIF22 Antibody (Center) - Background

Kinesin family that is involved in spindle formation and the movements of chromosomes during mitosis and meiosis. Binds to microtubules and to DNA.

KIF22 Antibody (Center) - References

Tokai N., et al. EMBO J. 15:457-467(1996).
Song J., et al. Genomics 52:374-377(1998).
Ota T., et al. Nat. Genet. 36:40-45(2004).

Kalnina N., et al. Submitted (MAY-2003) to the EMBL/GenBank/DDBJ databases.
Totoki Y., et al. Submitted (APR-2005) to the EMBL/GenBank/DDBJ databases.