

**KISS1 Antibody (C-Term)**  
**Purified Rabbit Polyclonal Antibody (Pab)**  
**Catalog # AP21473b**

**Specification**

---

**KISS1 Antibody (C-Term) - Product Information**

Application	IF, WB,E
Primary Accession	<a href="#">Q15726</a>
Reactivity	Human
Host	Rabbit
Clonality	polyclonal
Isotype	Rabbit IgG
Calculated MW	14705

**KISS1 Antibody (C-Term) - Additional Information**

**Gene ID** 3814

**Other Names**

Metastasis-suppressor KiSS-1, Kisspeptin-1, Metastin, Kisspeptin-54, Kisspeptin-14, Kisspeptin-13, Kisspeptin-10, KISS1

**Target/Specificity**

This KISS1 antibody is generated from a rabbit immunized with a KLH conjugated synthetic peptide between 115-145 amino acids from the human region of human KISS1.

**Dilution**

IF~~1:25

WB~~1:2000

**Format**

Purified polyclonal antibody supplied in PBS with 0.09% (W/V) sodium azide. This antibody is purified through a protein A column, followed by peptide affinity purification.

**Storage**

Maintain refrigerated at 2-8°C for up to 2 weeks. For long term storage store at -20°C in small aliquots to prevent freeze-thaw cycles.

**Precautions**

KISS1 Antibody (C-Term) is for research use only and not for use in diagnostic or therapeutic procedures.

**KISS1 Antibody (C-Term) - Protein Information**

**Name** KISS1

**Function** Metastasis suppressor protein in malignant melanomas and in some breast cancers. May regulate events downstream of cell-matrix adhesion, perhaps involving cytoskeletal

reorganization. Generates a C-terminally amidated peptide, metastin which functions as the endogenous ligand of the G-protein coupled receptor GPR54. Activation of the receptor inhibits cell proliferation and cell migration, key characteristics of tumor metastasis. Kp-10 is a decapeptide derived from the primary translation product, isolated in conditioned medium of first trimester trophoblast. Kp-10, but not other kisspeptins, increased intracellular Ca(2+) levels in isolated first trimester trophoblasts. Kp-10 is a paracrine/endocrine regulator in fine-tuning trophoblast invasion generated by the trophoblast itself. The receptor is also essential for normal gonadotropin-released hormone physiology and for puberty. The hypothalamic KiSS1/GPR54 system is a pivotal factor in central regulation of the gonadotropic axis at puberty and in adulthood.

#### **Cellular Location** Secreted.

#### **Tissue Location**

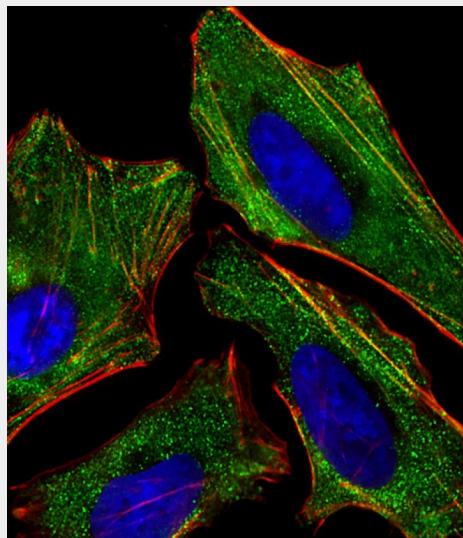
Very high expression in placenta, with the next highest level in testis and moderate levels in pancreas, liver, small intestine and brain at much lower levels. Expression levels increased in both early placentas and molar pregnancies and are reduced in choriocarcinoma cells. Expressed at higher levels in first trimester trophoblasts than at term of gestation, but only expressed in the villous trophoblast.

#### **KISS1 Antibody (C-Term) - Protocols**

Provided below are standard protocols that you may find useful for product applications.

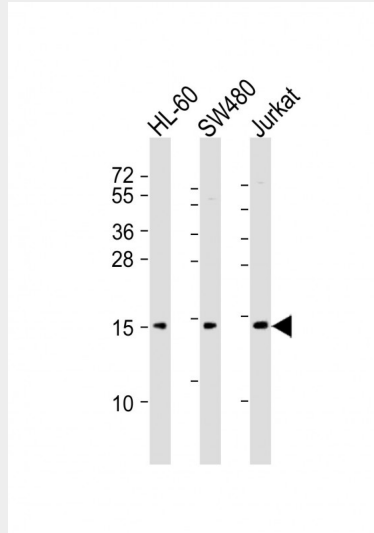
- [Western Blot](#)
- [Blocking Peptides](#)
- [Dot Blot](#)
- [Immunohistochemistry](#)
- [Immunofluorescence](#)
- [Immunoprecipitation](#)
- [Flow Cytometry](#)
- [Cell Culture](#)

#### **KISS1 Antibody (C-Term) - Images**

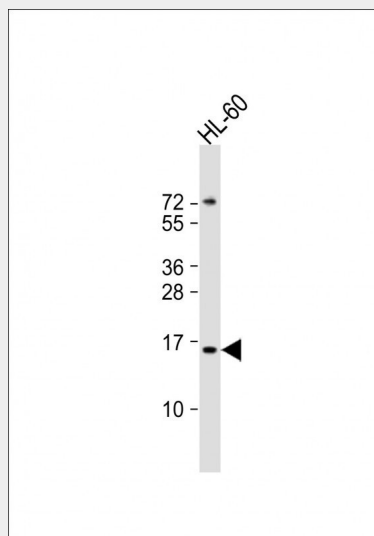


Immunofluorescent analysis of 4% paraformaldehyde-fixed, 0.1% Triton X-100 permeabilized

HeLa (human cervical epithelial adenocarcinoma cell line) cells labeling KISS1 with AP21473b at 1/25 dilution, followed by Dylight® 488-conjugated goat anti-rabbit IgG (NK179883) secondary antibody at 1/200 dilution (green). Immunofluorescence image showing cytoplasm staining on HeLa cell line. Cytoplasmic actin is detected with Dylight® 554 Phalloidin (PD18466410) at 1/100 dilution (red). The nuclear counter stain is DAPI (blue).



All lanes : Anti-KISS1 Antibody (C-Term) at 1:2000 dilution Lane 1: HL-60 whole cell lysates Lane 2: SW480 whole cell lysates Lane 3: Jurkat whole cell lysates Lysates/proteins at 20 µg per lane. Secondary Goat Anti-Rabbit IgG, (H+L), Peroxidase conjugated at 1/10000 dilution Predicted band size : 15 kDa Blocking/Dilution buffer: 5% NFD/MTBST.



Anti-KISS1 Antibody (C-Term) at 1:2000 dilution + HL-60 whole cell lysates Lysates/proteins at 20 µg per lane. Secondary Goat Anti-Rabbit IgG, (H+L), Peroxidase conjugated at 1/10000 dilution Predicted band size : 15 kDa Blocking/Dilution buffer: 5% NFD/MTBST.

### **KISS1 Antibody (C-Term) - Background**

Metastasis suppressor protein in malignant melanomas and in some breast cancers. May regulate events downstream of cell- matrix adhesion, perhaps involving cytoskeletal reorganization. Generates a C-terminally amidated peptide, metastin which functions as the endogenous ligand of the G-protein coupled receptor GPR54. Activation of the receptor inhibits cell proliferation and cell migration, key characteristics of tumor metastasis. Kp-10 is a decapeptide derived from the primary translation product, isolated in conditioned medium of first trimester trophoblast. Kp-10, but not

other kisspeptins, increased intracellular Ca(2+) levels in isolated first trimester trophoblasts. Kp-10 is a paracrine/endocrine regulator in fine-tuning trophoblast invasion generated by the trophoblast itself. The receptor is also essential for normal gonadotropin-released hormone physiology and for puberty. The hypothalamic KiSS1/GPR54 system is a pivotal factor in central regulation of the gonadotropic axis at puberty and in adulthood.

#### **KISS1 Antibody (C-Term) - References**

Lee J.-H., et al. J. Natl. Cancer Inst. 88:1731-1737(1996).

Lee J.-H., et al. J. Natl. Cancer Inst. 89:1549-1549(1997).

West A., et al. Genomics 54:145-148(1998).

Qiao C., et al. Submitted (JUN-2002) to the EMBL/GenBank/DDBJ databases.

Wan D., et al. Proc. Natl. Acad. Sci. U.S.A. 101:15724-15729(2004).