

WNT2 Antibody (Center)
Purified Rabbit Polyclonal Antibody (Pab)
Catalog # AP21468c

Specification

WNT2 Antibody (Center) - Product Information

Application	WB,E
Primary Accession	P09544
Reactivity	Human
Host	Rabbit
Clonality	polyclonal
Isotype	Rabbit IgG
Calculated MW	40418

WNT2 Antibody (Center) - Additional Information

Gene ID 7472

Other Names

Protein Wnt-2, Int-1-like protein 1, Int-1-related protein, IRP, WNT2, INT1L1, IRP

Target/Specificity

This WNT2 antibody is generated from a rabbit immunized with a KLH conjugated synthetic peptide between 254-287 amino acids from the Central region of human WNT2.

Dilution

WB~~1:2000

Format

Purified polyclonal antibody supplied in PBS with 0.09% (W/V) sodium azide. This antibody is purified through a protein A column, followed by peptide affinity purification.

Storage

Maintain refrigerated at 2-8°C for up to 2 weeks. For long term storage store at -20°C in small aliquots to prevent freeze-thaw cycles.

Precautions

WNT2 Antibody (Center) is for research use only and not for use in diagnostic or therapeutic procedures.

WNT2 Antibody (Center) - Protein Information

Name WNT2

Synonyms INT1L1, IRP

Function Ligand for members of the frizzled family of seven transmembrane receptors. Functions in the canonical Wnt signaling pathway that results in activation of transcription factors of the

TCF/LEF family (PubMed:[20018874](#)). Functions as a upstream regulator of FGF10 expression. Plays an important role in embryonic lung development. May contribute to embryonic brain development by regulating the proliferation of dopaminergic precursors and neurons (By similarity).

Cellular Location

Secreted, extracellular space, extracellular matrix. Secreted

Tissue Location

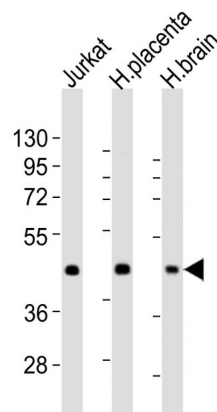
Expressed in brain in the thalamus, in fetal and adult lung and in placenta.

WNT2 Antibody (Center) - Protocols

Provided below are standard protocols that you may find useful for product applications.

- [Western Blot](#)
- [Blocking Peptides](#)
- [Dot Blot](#)
- [Immunohistochemistry](#)
- [Immunofluorescence](#)
- [Immunoprecipitation](#)
- [Flow Cytometry](#)
- [Cell Culture](#)

WNT2 Antibody (Center) - Images



All lanes : Anti-WNT2 Antibody (Center) at 1:2000 dilution Lane 1: Jurkat whole cell lysates Lane 2: human placenta lysates Lane 3: human brain lysates Lysates/proteins at 20 µg per lane. Secondary Goat Anti-Rabbit IgG, (H+L), Peroxidase conjugated at 1/10000 dilution Predicted band size : 40 kDa Blocking/Dilution buffer: 5% NFD/MTBST.

WNT2 Antibody (Center) - Background

Ligand for members of the frizzled family of seven transmembrane receptors. Probable developmental protein. May be a signaling molecule which affects the development of discrete regions of tissues. Is likely to signal over only few cell diameters.

WNT2 Antibody (Center) - References

- Wainwright B.J., et al. EMBO J. 7:1743-1748(1988).
Farrall M., et al. Submitted (APR-1988) to the EMBL/GenBank/DDBJ databases.
Ota T., et al. Nat. Genet. 36:40-45(2004).
Kalnine N., et al. Submitted (OCT-2004) to the EMBL/GenBank/DDBJ databases.
Hillier L.W., et al. Nature 424:157-164(2003).