

SH3GL2 Antibody (C-term)
Purified Rabbit Polyclonal Antibody (Pab)
Catalog # AP21467b

Specification

SH3GL2 Antibody (C-term) - Product Information

Application	WB,E
Primary Accession	Q99962
Reactivity	Human, Mouse, Rat
Host	Rabbit
Clonality	polyclonal
Isotype	Rabbit IgG
Calculated MW	39962

SH3GL2 Antibody (C-term) - Additional Information

Gene ID 6456

Other Names

Endophilin-A1, EEN-B1, Endophilin-1, SH3 domain protein 2A, SH3 domain-containing GRB2-like protein 2, SH3GL2, CNSA2, SH3D2A

Target/Specificity

This SH3GL2 antibody is generated from a rabbit immunized with a KLH conjugated synthetic peptide between 245-279 amino acids from the C-terminal region of human SH3GL2.

Dilution

WB~~1:2000

Format

Purified polyclonal antibody supplied in PBS with 0.09% (W/V) sodium azide. This antibody is purified through a protein A column, followed by peptide affinity purification.

Storage

Maintain refrigerated at 2-8°C for up to 2 weeks. For long term storage store at -20°C in small aliquots to prevent freeze-thaw cycles.

Precautions

SH3GL2 Antibody (C-term) is for research use only and not for use in diagnostic or therapeutic procedures.

SH3GL2 Antibody (C-term) - Protein Information

Name SH3GL2

Synonyms CNSA2, SH3D2A

Function Implicated in synaptic vesicle endocytosis. May recruit other proteins to membranes

with high curvature. Required for BDNF-dependent dendrite outgrowth. Cooperates with SH3GL2 to mediate BDNF-NTRK2 early endocytic trafficking and signaling from early endosomes.

Cellular Location

Cytoplasm {ECO:0000250|UniProtKB:O35179}. Membrane {ECO:0000250|UniProtKB:O35179}; Peripheral membrane protein {ECO:0000250|UniProtKB:O35179}. Early endosome {ECO:0000250|UniProtKB:Q62420}. Presynapse {ECO:0000250|UniProtKB:O35179}

Tissue Location

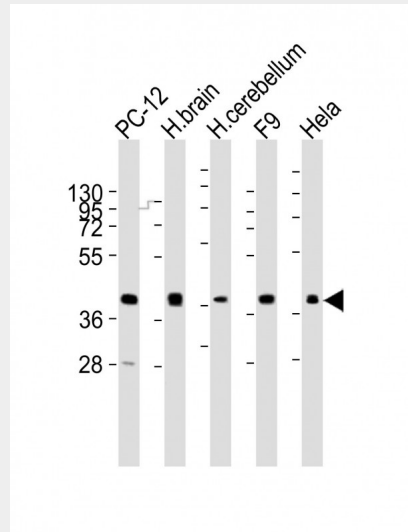
Brain, mostly in frontal cortex. Expressed at high level in fetal cerebellum

SH3GL2 Antibody (C-term) - Protocols

Provided below are standard protocols that you may find useful for product applications.

- [Western Blot](#)
- [Blocking Peptides](#)
- [Dot Blot](#)
- [Immunohistochemistry](#)
- [Immunofluorescence](#)
- [Immunoprecipitation](#)
- [Flow Cytometry](#)
- [Cell Culture](#)

SH3GL2 Antibody (C-term) - Images



All lanes : Anti-SH3GL2 Antibody (C-term) at 1:2000 dilution Lane 1: PC-12 whole cell lysates Lane 2: human brain lysates Lane 3: human cerebellum lysates Lane 4: F9 whole cell lysates Lane 5: HeLa whole cell lysates Lysates/proteins at 20 µg per lane. Secondary Goat Anti-Rabbit IgG, (H+L), Peroxidase conjugated at 1/10000 dilution Predicted band size : 40 kDa Blocking/Dilution buffer: 5% NFD/MTBST.

SH3GL2 Antibody (C-term) - Background

Implicated in synaptic vesicle endocytosis. May recruit other proteins to membranes with high curvature.

SH3GL2 Antibody (C-term) - References

Giachino C., et al. *Genomics* 41:427-434(1997).

So C.W., et al. Submitted (MAR-1998) to the EMBL/GenBank/DDBJ databases.

Halleck A., et al. Submitted (JUN-2004) to the EMBL/GenBank/DDBJ databases.

Kalnine N., et al. Submitted (OCT-2004) to the EMBL/GenBank/DDBJ databases.

Ota T., et al. *Nat. Genet.* 36:40-45(2004).