

CAPN2 Antibody (Center)
Purified Rabbit Polyclonal Antibody (Pab)
Catalog # AP21463c

Specification

CAPN2 Antibody (Center) - Product Information

Application	WB,E
Primary Accession	P17655
Reactivity	Human
Host	Rabbit
Clonality	polyclonal
Isotype	Rabbit IgG
Calculated MW	79995

CAPN2 Antibody (Center) - Additional Information

Gene ID 824

Other Names

Calpain-2 catalytic subunit, Calcium-activated neutral proteinase 2, CANP 2, Calpain M-type, Calpain large polypeptide L2, Calpain-2 large subunit, Millimolar-calpain, M-calpain, CAPN2, CANPL2

Target/Specificity

This CAPN2 antibody is generated from a rabbit immunized with a KLH conjugated synthetic peptide between 301-335 amino acids from the Central region of human CAPN2.

Dilution

WB~~1:2000

Format

Purified polyclonal antibody supplied in PBS with 0.09% (W/V) sodium azide. This antibody is purified through a protein A column, followed by peptide affinity purification.

Storage

Maintain refrigerated at 2-8°C for up to 2 weeks. For long term storage store at -20°C in small aliquots to prevent freeze-thaw cycles.

Precautions

CAPN2 Antibody (Center) is for research use only and not for use in diagnostic or therapeutic procedures.

CAPN2 Antibody (Center) - Protein Information

Name CAPN2

Synonyms CANPL2

Function Calcium-regulated non-lysosomal thiol-protease which catalyzes limited proteolysis of substrates involved in cytoskeletal remodeling and signal transduction. Proteolytically cleaves MYOC at 'Arg-226' (PubMed:[17650508](#)). Proteolytically cleaves CPEB3 following neuronal stimulation which abolishes CPEB3 translational repressor activity, leading to translation of CPEB3 target mRNAs (By similarity).

Cellular Location

Cytoplasm. Cell membrane. Note=Translocates to the plasma membrane upon Ca(2+) binding

Tissue Location

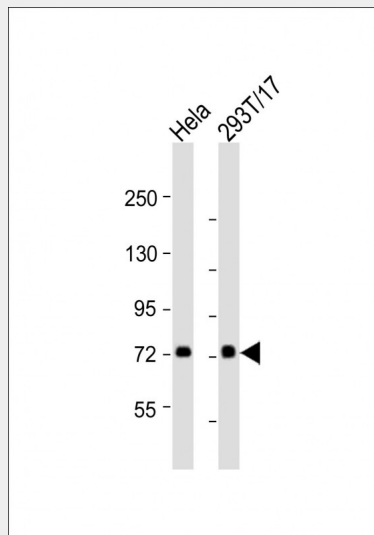
Ubiquitous.

CAPN2 Antibody (Center) - Protocols

Provided below are standard protocols that you may find useful for product applications.

- [Western Blot](#)
- [Blocking Peptides](#)
- [Dot Blot](#)
- [Immunohistochemistry](#)
- [Immunofluorescence](#)
- [Immunoprecipitation](#)
- [Flow Cytometry](#)
- [Cell Culture](#)

CAPN2 Antibody (Center) - Images



All lanes : Anti-CAPN2 Antibody (Center) at 1:2000 dilution Lane 1: HeLa whole cell lysates Lane 2: 293T/17 whole cell lysates Lysates/proteins at 20 µg per lane. Secondary Goat Anti-Rabbit IgG, (H+L), Peroxidase conjugated at 1/10000 dilution Predicted band size : 80 kDa Blocking/Dilution buffer: 5% NFDM/TBST.

CAPN2 Antibody (Center) - Background

Calcium-regulated non-lysosomal thiol-protease which catalyze limited proteolysis of substrates involved in cytoskeletal remodeling and signal transduction. Proteolytically cleaves MYOC at 'Arg-226' (PubMed:[17650508](#)).

CAPN2 Antibody (Center) - References

Imajoh S.,et al.Biochemistry 27:8122-8128(1988).
Ye Z.,et al.Biochem. Biophys. Res. Commun. 275:223-227(2000).
Ota T.,et al.Nat. Genet. 36:40-45(2004).
Gregory S.G.,et al.Nature 441:315-321(2006).
Hata A.,et al.J. Biol. Chem. 264:6404-6411(1989).

CAPN2 Antibody (Center) - Citations

- [Calpain-Calcineurin-Nuclear Factor Signaling and the Development of Atrial Fibrillation in Patients with Valvular Heart Disease and Diabetes.](#)