

AQPEP Antibody (C-Term)
Purified Rabbit Polyclonal Antibody (Pab)
Catalog # AP21461b

Specification

AQPEP Antibody (C-Term) - Product Information

| | |
|-------------------|------------------------|
| Application | WB,E |
| Primary Accession | Q6Q4G3 |
| Reactivity | Human |
| Host | Rabbit |
| Clonality | polyclonal |
| Isotype | Rabbit IgG |
| Calculated MW | 113283 |

AQPEP Antibody (C-Term) - Additional Information

Gene ID 206338

Other Names

Aminopeptidase Q, AP-Q, 3411-, CHL2 antigen, Laeverin, AQPEP, LVRN

Target/Specificity

This AQPEP antibody is generated from a rabbit immunized with a KLH conjugated synthetic peptide between 844-877 amino acids from human AQPEP.

Dilution

WB~~1:2000

Format

Purified polyclonal antibody supplied in PBS with 0.09% (W/V) sodium azide. This antibody is purified through a protein A column, followed by peptide affinity purification.

Storage

Maintain refrigerated at 2-8°C for up to 2 weeks. For long term storage store at -20°C in small aliquots to prevent freeze-thaw cycles.

Precautions

AQPEP Antibody (C-Term) is for research use only and not for use in diagnostic or therapeutic procedures.

AQPEP Antibody (C-Term) - Protein Information

Name LVRN ([HGNC:26904](#))

Function Metalloprotease which may be important for placentation by regulating biological activity of key peptides at the embryo-maternal interface. On synthetic substrates it shows a marked preference for Leu-4-methylcoumaryl-7-amide (Leu-MCA) over Met-MCA, Arg-LCA and Lys-LCA. Cleaves the N-terminal amino acid of several peptides such as angiotensin-3, kisspeptin-10

and endokinin C.

Cellular Location

Membrane; Single-pass type II membrane protein

Tissue Location

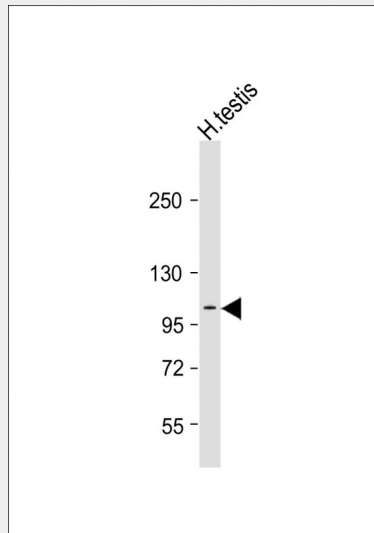
Specifically expressed in placenta and not in other tissues. Mainly found at the cell surface region of the extravillous trophoblasts. Detected on extravillous trophoblasts in the outer layer of the chorion laeve in the fetal membrane Not detected on either fetal amnionic epithelial cells or maternal decidual cells. Also detected in the migrating extravillous trophoblasts in the maternal decidual tissues (at protein level).

AQPEP Antibody (C-Term) - Protocols

Provided below are standard protocols that you may find useful for product applications.

- [Western Blot](#)
- [Blocking Peptides](#)
- [Dot Blot](#)
- [Immunohistochemistry](#)
- [Immunofluorescence](#)
- [Immunoprecipitation](#)
- [Flow Cytometry](#)
- [Cell Culture](#)

AQPEP Antibody (C-Term) - Images



Anti-AQPEP Antibody (C-Term) at 1:2000 dilution + human testis lysates Lysates/proteins at 20 µg per lane. Secondary Goat Anti-Rabbit IgG, (H+L), Peroxidase conjugated at 1/10000 dilution Predicted band size : 113 kDa Blocking/Dilution buffer: 5% NFDN/TBST.

AQPEP Antibody (C-Term) - Background

Metalloprotease which may be important for placentation by regulating biological activity of key peptides at the embryo- maternal interface. On synthetic substrates it shows a marked preference for Leu-4-methylcoumaryl-7-amide (Leu-MCA) over Met- MCA, Arg-LCA and Lys-LCA. Cleaves the N-terminal amino acid of several peptides such as angiotensin-3, kisspeptin-10 and endokinin C.

AQPEP Antibody (C-Term) - References

- Fujiwara H.,et al.Biochem. Biophys. Res. Commun. 313:962-968(2004).
Ota T.,et al.Nat. Genet. 36:40-45(2004).
Schmutz J.,et al.Nature 431:268-274(2004).
Mural R.J.,et al.Submitted (SEP-2005) to the EMBL/GenBank/DDBJ databases.
Maruyama M.,et al.J. Biol. Chem. 282:20088-20096(2007).