

**YY1AP1 Antibody (Center)**  
**Purified Rabbit Polyclonal Antibody (Pab)**  
**Catalog # AP21459c**

**Specification**

---

**YY1AP1 Antibody (Center) - Product Information**

Application	WB,E
Primary Accession	<a href="#">O9H869</a>
Reactivity	Human
Host	Rabbit
Clonality	polyclonal
Isotype	Rabbit IgG
Calculated MW	87944

**YY1AP1 Antibody (Center) - Additional Information**

**Gene ID** 55249

**Other Names**

YY1-associated protein 1, Hepatocellular carcinoma susceptibility protein, Hepatocellular carcinoma-associated protein 2, YY1AP1, HCCA2, YY1AP

**Target/Specificity**

This YY1AP1 antibody is generated from a rabbit immunized with a KLH conjugated synthetic peptide between 437-468 amino acids from the Central region of human YY1AP1.

**Dilution**

WB~~1:2000

**Format**

Purified polyclonal antibody supplied in PBS with 0.09% (W/V) sodium azide. This antibody is purified through a protein A column, followed by peptide affinity purification.

**Storage**

Maintain refrigerated at 2-8°C for up to 2 weeks. For long term storage store at -20°C in small aliquots to prevent freeze-thaw cycles.

**Precautions**

YY1AP1 Antibody (Center) is for research use only and not for use in diagnostic or therapeutic procedures.

**YY1AP1 Antibody (Center) - Protein Information**

**Name** YY1AP1 ([HGNC:30935](#))

**Function** Associates with the INO80 chromatin remodeling complex, which is responsible for transcriptional regulation, DNA repair, and replication (PubMed:[27939641](#)). Enhances transcription activation by YY1 (PubMed:[14744866](#)). Plays a role in cell cycle regulation (PubMed:[17541814](#),

PubMed:[27939641](#)).

#### Cellular Location

Cytoplasm. Nucleus. Nucleus, nucleoplasm. Nucleus, nucleolus

#### Tissue Location

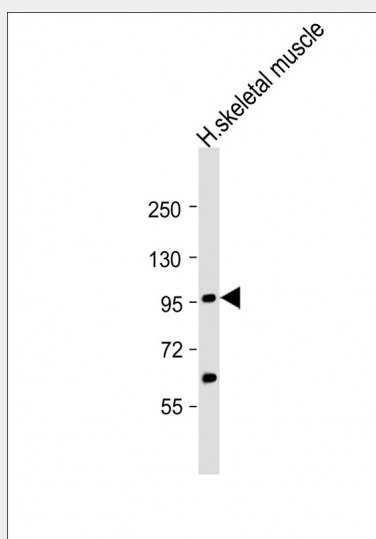
Ubiquitous. Detected in small intestine, skeletal muscle, lung, pancreas, brain, stomach, spleen, colon and heart Detected at very low levels in healthy liver. Highly expressed in most liver carcinomas.

### YY1AP1 Antibody (Center) - Protocols

Provided below are standard protocols that you may find useful for product applications.

- [Western Blot](#)
- [Blocking Peptides](#)
- [Dot Blot](#)
- [Immunohistochemistry](#)
- [Immunofluorescence](#)
- [Immunoprecipitation](#)
- [Flow Cytometry](#)
- [Cell Culture](#)

### YY1AP1 Antibody (Center) - Images



Anti-YY1AP1 Antibody (Center) at 1:2000 dilution + human skeletal muscle lysates. Lysates/proteins at 20 µg per lane. Secondary Goat Anti-Rabbit IgG, (H+L), Peroxidase conjugated at 1/10000 dilution. Predicted band size : 88 kDa. Blocking/Dilution buffer: 5% NFDM/TBST.

### YY1AP1 Antibody (Center) - Background

Enhances transcription activation by YY1. May play a role in cell cycle regulation.

### YY1AP1 Antibody (Center) - References

Wang Z.-X., et al. Br. J. Cancer Suppl. 85:1162-1167(2001).  
Wang C.-Y., et al. J. Biol. Chem. 279:17750-17755(2004).

Zeng J.Z.,et al.Oncogene 21:4932-4943(2002).  
Ota T.,et al.Nat. Genet. 36:40-45(2004).  
Gregory S.G.,et al.Nature 441:315-321(2006).