

FCGR1A Antibody (Center)
Purified Rabbit Polyclonal Antibody (Pab)
Catalog # AP21448c

Specification

FCGR1A Antibody (Center) - Product Information

Application	WB,E
Primary Accession	P12314
Reactivity	Human
Host	Rabbit
Clonality	polyclonal
Isotype	Rabbit IgG

FCGR1A Antibody (Center) - Additional Information

Gene ID 2209

Other Names

High affinity immunoglobulin gamma Fc receptor I, IgG Fc receptor I, Fc-gamma RI, FcRI, Fc-gamma RIA, FcgammaRIa, CD64, FCGR1A, FCG1, FCGR1, IGFR1

Target/Specificity

This FCGR1A antibody is generated from a rabbit immunized with a KLH conjugated synthetic peptide between 168-200 amino acids from the Central region of human FCGR1A.

Dilution

WB~~1:2000

Format

Purified polyclonal antibody supplied in PBS with 0.09% (W/V) sodium azide. This antibody is purified through a protein A column, followed by peptide affinity purification.

Storage

Maintain refrigerated at 2-8°C for up to 2 weeks. For long term storage store at -20°C in small aliquots to prevent freeze-thaw cycles.

Precautions

FCGR1A Antibody (Center) is for research use only and not for use in diagnostic or therapeutic procedures.

FCGR1A Antibody (Center) - Protein Information

Name FCGR1A

Synonyms FCG1, FCGR1, IGFR1

Function High affinity receptor for the Fc region of immunoglobulins gamma. Functions in both innate and adaptive immune responses. Mediates IgG effector functions on monocytes triggering

antibody-dependent cellular cytotoxicity (ADCC) of virus-infected cells.

Cellular Location

Cell membrane; Single-pass type I membrane protein Note=Stabilized at the cell membrane through interaction with FCER1G

Tissue Location

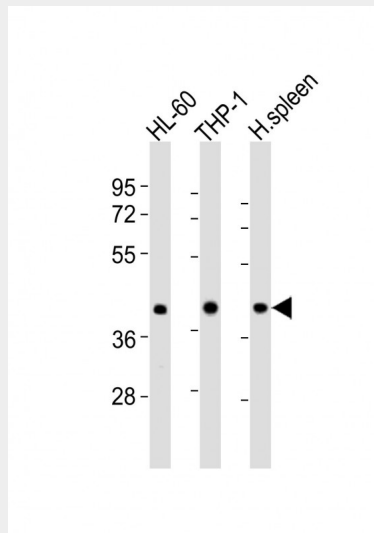
Monocyte/macrophage specific.

FCGR1A Antibody (Center) - Protocols

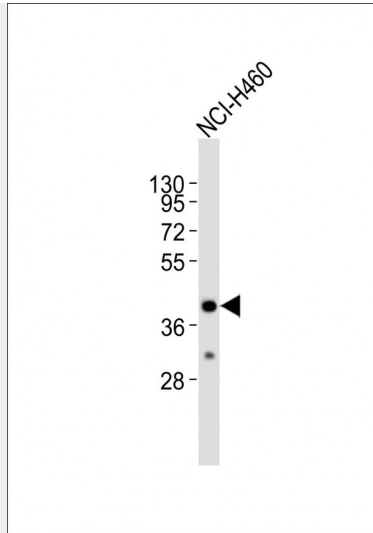
Provided below are standard protocols that you may find useful for product applications.

- [Western Blot](#)
- [Blocking Peptides](#)
- [Dot Blot](#)
- [Immunohistochemistry](#)
- [Immunofluorescence](#)
- [Immunoprecipitation](#)
- [Flow Cytometry](#)
- [Cell Culture](#)

FCGR1A Antibody (Center) - Images



All lanes : Anti-FCGR1A Antibody (Center) at 1:8000 dilution Lane 1: HL-60 whole cell lysates Lane 2: THP-1 whole cell lysates Lane 3: human spleen lysates Lysates/proteins at 20 µg per lane. Secondary Goat Anti-Rabbit IgG, (H+L), Peroxidase conjugated at 1/10000 dilution Predicted band size : 43 kDa Blocking/Dilution buffer: 5% NFDN/TBST.



Anti-FCGR1A Antibody (Center) at 1:2000 dilution + NCI-H460 whole cell lysates Lysates/proteins at 20 µg per lane. Secondary Goat Anti-Rabbit IgG, (H+L), Peroxidase conjugated at 1/10000 dilution Predicted band size : 43 kDa Blocking/Dilution buffer: 5% NFDM/TBST.

FCGR1A Antibody (Center) - Background

High affinity receptor for the Fc region of immunoglobulins gamma. Functions in both innate and adaptive immune responses.

FCGR1A Antibody (Center) - References

- Allen J.M., et al. Nucleic Acids Res. 16:11824-11824(1988).
- Allen J.M., et al. Science 243:378-381(1989).
- Porges A.J., et al. J. Clin. Invest. 90:2102-2109(1992).
- Benech P.D., et al. J. Exp. Med. 176:1115-1123(1992).
- Gregory S.G., et al. Nature 441:315-321(2006).