

ROCK2 Antibody (C-term)
Purified Rabbit Polyclonal Antibody (Pab)
Catalog # AP21441b

Specification

ROCK2 Antibody (C-term) - Product Information

Application	WB,E
Primary Accession	O75116
Reactivity	Human, Mouse, Rat
Host	Rabbit
Clonality	polyclonal
Isotype	Rabbit IgG
Calculated MW	160900

ROCK2 Antibody (C-term) - Additional Information

Gene ID 9475

Other Names

Rho-associated protein kinase 2, Rho kinase 2, Rho-associated, coiled-coil-containing protein kinase 2, Rho-associated, coiled-coil-containing protein kinase II, ROCK-II, p164 ROCK-2, ROCK2, KIAA0619

Target/Specificity

This ROCK2 antibody is generated from a rabbit immunized with a KLH conjugated synthetic peptide between 1346-1380 amino acids from the C-terminal region of human ROCK2.

Dilution

WB~~1:2000

Format

Purified polyclonal antibody supplied in PBS with 0.09% (W/V) sodium azide. This antibody is purified through a protein A column, followed by peptide affinity purification.

Storage

Maintain refrigerated at 2-8°C for up to 2 weeks. For long term storage store at -20°C in small aliquots to prevent freeze-thaw cycles.

Precautions

ROCK2 Antibody (C-term) is for research use only and not for use in diagnostic or therapeutic procedures.

ROCK2 Antibody (C-term) - Protein Information

Name ROCK2

Synonyms KIAA0619

Function Protein kinase which is a key regulator of actin cytoskeleton and cell polarity. Involved in regulation of smooth muscle contraction, actin cytoskeleton organization, stress fiber and focal adhesion formation, neurite retraction, cell adhesion and motility via phosphorylation of ADD1, BRCA2, CNN1, EZR, DPYSL2, EP300, MSN, MYL9/MLC2, NPM1, RDX, PPP1R12A and VIM. Phosphorylates SORL1 and IRF4. Acts as a negative regulator of VEGF-induced angiogenic endothelial cell activation. Positively regulates the activation of p42/MAPK1- p44/MAPK3 and of p90RSK/RPS6KA1 during myogenic differentiation. Plays an important role in the timely initiation of centrosome duplication. Inhibits keratinocyte terminal differentiation. May regulate closure of the eyelids and ventral body wall through organization of actomyosin bundles. Plays a critical role in the regulation of spine and synaptic properties in the hippocampus. Plays an important role in generating the circadian rhythm of the aortic myofilament Ca(2+) sensitivity and vascular contractility by modulating the myosin light chain phosphorylation.

Cellular Location

Cytoplasm. Cell membrane; Peripheral membrane protein. Nucleus. Cytoplasm, cytoskeleton, microtubule organizing center, centrosome Note=Cytoplasmic, and associated with actin microfilaments and the plasma membrane.

Tissue Location

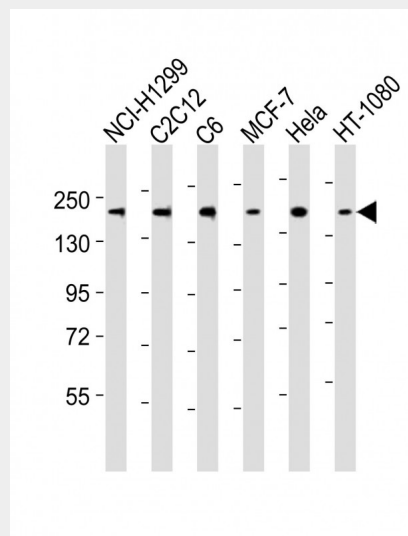
Expressed in the brain (at protein level).

ROCK2 Antibody (C-term) - Protocols

Provided below are standard protocols that you may find useful for product applications.

- [Western Blot](#)
- [Blocking Peptides](#)
- [Dot Blot](#)
- [Immunohistochemistry](#)
- [Immunofluorescence](#)
- [Immunoprecipitation](#)
- [Flow Cytometry](#)
- [Cell Culture](#)

ROCK2 Antibody (C-term) - Images



All lanes : Anti-ROCK2 Antibody (C-term) at 1:2000 dilution Lane 1: NCI-H1299 whole cell lysates

Lane 2: C2C12 whole cell lysates Lane 3: C6 whole cell lysates Lane 4: MCF-7 whole cell lysates
Lane 5: Hela whole cell lysates Lane 6: HT-1080 whole cell lysates Lysates/proteins at 20 µg per
lane. Secondary Goat Anti-Rabbit IgG, (H+L), Peroxidase conjugated at 1/10000 dilution Predicted
band size : 161 kDa Blocking/Dilution buffer: 5% NFDM/TBST.

ROCK2 Antibody (C-term) - Background

Protein kinase which is a key regulator of actin cytoskeleton and cell polarity. Involved in regulation of smooth muscle contraction, actin cytoskeleton organization, stress fiber and focal adhesion formation, neurite retraction, cell adhesion and motility via phosphorylation of ADD1, BRCA2, CNN1, EZR, DPYSL2, EP300, MSN, MYL9/MLC2, NPM1, RDX, PPP1R12A and VIM. Phosphorylates SORL1 and IRF4. Acts as a negative regulator of VEGF-induced angiogenic endothelial cell activation. Positively regulates the activation of p42/MAPK1-p44/MAPK3 and of p90RSK/RPS6KA1 during myogenic differentiation. Plays an important role in the timely initiation of centrosome duplication. Inhibits keratinocyte terminal differentiation. May regulate closure of the eyelids and ventral body wall through organization of actomyosin bundles. Plays a critical role in the regulation of spine and synaptic properties in the hippocampus. Plays an important role in generating the circadian rhythm of the aortic myofilament Ca(2+) sensitivity and vascular contractility by modulating the myosin light chain phosphorylation.

ROCK2 Antibody (C-term) - References

Takahashi N.,et al.Genomics 55:235-237(1999).
Ishikawa K.,et al.DNA Res. 5:169-176(1998).
Hillier L.W.,et al.Nature 434:724-731(2005).
Kawano Y.,et al.J. Cell Biol. 147:1023-1038(1999).
Sebbagh M.,et al.J. Exp. Med. 201:465-471(2005).