

FKBP1A Antibody (Center)
Purified Rabbit Polyclonal Antibody (Pab)
Catalog # AP21438c

Specification

FKBP1A Antibody (Center) - Product Information

Application	WB,E
Primary Accession	P62942
Reactivity	Human, Mouse, Rat
Host	Rabbit
Clonality	polyclonal
Isotype	Rabbit IgG
Calculated MW	11951

FKBP1A Antibody (Center) - Additional Information

Gene ID 2280

Other Names

Peptidyl-prolyl cis-trans isomerase FKBP1A, PPIase FKBP1A, 12 kDa FK506-binding protein, 12 kDa FKBP, FKBP-12, Calstabin-1, FK506-binding protein 1A, FKBP-1A, Immunophilin FKBP12, Rotamase, FKBP1A, FKBP1, FKBP12

Target/Specificity

This FKBP1A antibody is generated from a rabbit immunized with a KLH conjugated synthetic peptide between 34-68 amino acids from the Central region of human FKBP1A.

Dilution

WB~~1:2000

Format

Purified polyclonal antibody supplied in PBS with 0.09% (W/V) sodium azide. This antibody is purified through a protein A column, followed by peptide affinity purification.

Storage

Maintain refrigerated at 2-8°C for up to 2 weeks. For long term storage store at -20°C in small aliquots to prevent freeze-thaw cycles.

Precautions

FKBP1A Antibody (Center) is for research use only and not for use in diagnostic or therapeutic procedures.

FKBP1A Antibody (Center) - Protein Information

Name FKBP1A

Synonyms FKBP1, FKBP12

Function Keeps in an inactive conformation TGFBR1, the TGF-beta type I serine/threonine kinase receptor, preventing TGF-beta receptor activation in absence of ligand. Recruits SMAD7 to ACVR1B which prevents the association of SMAD2 and SMAD3 with the activin receptor complex, thereby blocking the activin signal. May modulate the RYR1 calcium channel activity. PPIases accelerate the folding of proteins. It catalyzes the cis-trans isomerization of proline imidic peptide bonds in oligopeptides.

Cellular Location

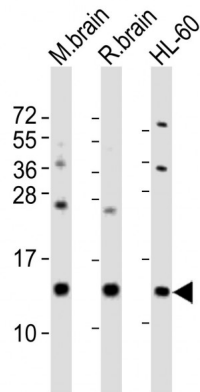
Cytoplasm, cytosol. Sarcoplasmic reticulum membrane {ECO:0000250|UniProtKB:P62943}; Peripheral membrane protein {ECO:0000250|UniProtKB:P62943}; Cytoplasmic side {ECO:0000250|UniProtKB:P62943}

FKBP1A Antibody (Center) - Protocols

Provided below are standard protocols that you may find useful for product applications.

- [Western Blot](#)
- [Blocking Peptides](#)
- [Dot Blot](#)
- [Immunohistochemistry](#)
- [Immunofluorescence](#)
- [Immunoprecipitation](#)
- [Flow Cytometry](#)
- [Cell Culture](#)

FKBP1A Antibody (Center) - Images



All lanes : Anti-FKBP1A Antibody (Center) at 1:2000 dilution Lane 1: mouse brain lysates Lane 2: rat brain lysates Lane 3: HL-60 whole cell lysates Lysates/proteins at 20 µg per lane. Secondary Goat Anti-Rabbit IgG, (H+L), Peroxidase conjugated at 1/10000 dilution Predicted band size : 12 kDa Blocking/Dilution buffer: 5% NFDN/TBST.

FKBP1A Antibody (Center) - Background

Keeps in an inactive conformation TGFBR1, the TGF-beta type I serine/threonine kinase receptor, preventing TGF-beta receptor activation in absence of ligand. Recruits SMAD7 to ACVR1B which prevents the association of SMAD2 and SMAD3 with the activin receptor complex, thereby blocking

the activin signal. May modulate the RYR1 calcium channel activity. PPIases accelerate the folding of proteins. It catalyzes the cis-trans isomerization of proline imidic peptide bonds in oligopeptides.

FKBP1A Antibody (Center) - References

- Maki N.,et al.Proc. Natl. Acad. Sci. U.S.A. 87:5440-5443(1990).
Standaert R.F.,et al.Nature 346:671-674(1990).
Dilella A.G.,et al.Biochemistry 30:8512-8517(1991).
Peattie D.A.,et al.Gene 150:251-257(1994).
Kalnine N.,et al.Submitted (MAY-2003) to the EMBL/GenBank/DDBJ databases.