

**CBX8 Antibody (Center)**  
**Purified Rabbit Polyclonal Antibody (Pab)**  
**Catalog # AP21434c**

**Specification**

---

**CBX8 Antibody (Center) - Product Information**

Application	<b>WB, IHC-P,E</b>
Primary Accession	<a href="#">O9HC52</a>
Reactivity	<b>Human, Rat</b>
Host	<b>Rabbit</b>
Clonality	<b>polyclonal</b>
Isotype	<b>Rabbit IgG</b>

**CBX8 Antibody (Center) - Additional Information**

**Gene ID** 57332

**Other Names**

Chromobox protein homolog 8, Polycomb 3 homolog, Pc3, hPc3, Rectachrome 1, CBX8, PC3, RC1

**Target/Specificity**

This CBX8 antibody is generated from a rabbit immunized with a KLH conjugated synthetic peptide between 197-230 amino acids from the Central region of human CBX8.

**Dilution**

WB~~1:8000  
IHC-P~~1:100

**Format**

Purified polyclonal antibody supplied in PBS with 0.09% (W/V) sodium azide. This antibody is purified through a protein A column, followed by peptide affinity purification.

**Storage**

Maintain refrigerated at 2-8°C for up to 2 weeks. For long term storage store at -20°C in small aliquots to prevent freeze-thaw cycles.

**Precautions**

CBX8 Antibody (Center) is for research use only and not for use in diagnostic or therapeutic procedures.

**CBX8 Antibody (Center) - Protein Information**

**Name** CBX8

**Synonyms** PC3, RC1

**Function** Component of a Polycomb group (PcG) multiprotein PRC1-like complex, a complex class required to maintain the transcriptionally repressive state of many genes, including Hox genes,

throughout development. PcG PRC1 complex acts via chromatin remodeling and modification of histones; it mediates monoubiquitination of histone H2A 'Lys-119', rendering chromatin heritably changed in its expressibility.

#### Cellular Location

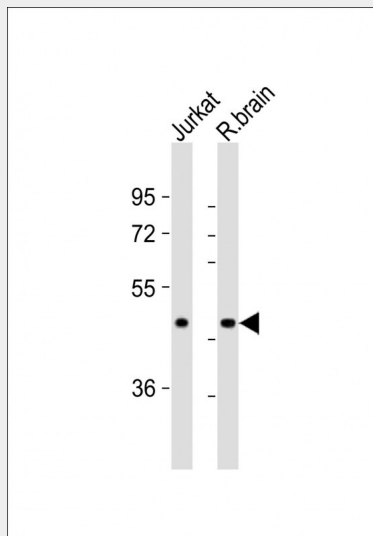
Nucleus.

#### CBX8 Antibody (Center) - Protocols

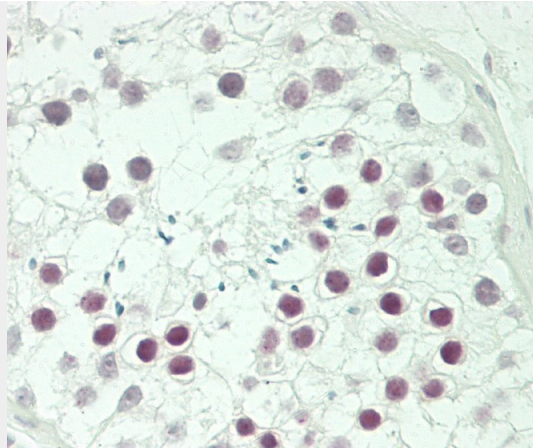
Provided below are standard protocols that you may find useful for product applications.

- [Western Blot](#)
- [Blocking Peptides](#)
- [Dot Blot](#)
- [Immunohistochemistry](#)
- [Immunofluorescence](#)
- [Immunoprecipitation](#)
- [Flow Cytometry](#)
- [Cell Culture](#)

#### CBX8 Antibody (Center) - Images



All lanes : Anti-CBX8 Antibody (Center) at 1:8000 dilution Lane 1: Jurkat whole cell lysates Lane 2: rat brain lysates Lysates/proteins at 20 µg per lane. Secondary Goat Anti-Rabbit IgG, (H+L), Peroxidase conjugated at 1/10000 dilution Predicted band size : 43 kDa Blocking/Dilution buffer: 5% NFD/MTBST.



Formalin-fixed and paraffin-embedded H.testis tissue reacted with CBX8 Antibody (Center) (Cat#AP21434c).

#### **CBX8 Antibody (Center) - Background**

Component of a Polycomb group (PcG) multiprotein PRC1- like complex, a complex class required to maintain the transcriptionally repressive state of many genes, including Hox genes, throughout development. PcG PRC1 complex acts via chromatin remodeling and modification of histones; it mediates monoubiquitination of histone H2A 'Lys-119', rendering chromatin heritably changed in its expressibility.

#### **CBX8 Antibody (Center) - References**

Bardos J.I.,et al.J. Biol. Chem. 275:28785-28792(2000).  
Michael M.Z.,et al.Submitted (DEC-2002) to the EMBL/GenBank/DDBJ databases.  
Ota T.,et al.Nat. Genet. 36:40-45(2004).  
Garcia-Cuellar M.P.,et al.Oncogene 20:411-419(2001).  
Levine S.S.,et al.Mol. Cell. Biol. 22:6070-6078(2002).