

DBH Antibody (Center)
Purified Rabbit Polyclonal Antibody (Pab)
Catalog # AP21423c**Specification**

DBH Antibody (Center) - Product Information

Application	WB,E
Primary Accession	P09172
Reactivity	Human
Host	Rabbit
Clonality	polyclonal
Isotype	Rabbit IgG
Calculated MW	69065

DBH Antibody (Center) - Additional Information**Gene ID** 1621**Other Names**

Dopamine beta-hydroxylase, Dopamine beta-monoxygenase, Soluble dopamine beta-hydroxylase, DBH

Target/Specificity

This DBH antibody is generated from a rabbit immunized with a KLH conjugated synthetic peptide between 270-303 amino acids from the Central region of human DBH.

Dilution

WB~~1:2000

Format

Purified polyclonal antibody supplied in PBS with 0.09% (W/V) sodium azide. This antibody is purified through a protein A column, followed by peptide affinity purification.

Storage

Maintain refrigerated at 2-8°C for up to 2 weeks. For long term storage store at -20°C in small aliquots to prevent freeze-thaw cycles.

Precautions

DBH Antibody (Center) is for research use only and not for use in diagnostic or therapeutic procedures.

DBH Antibody (Center) - Protein Information**Name** DBH**Function** Catalyzes the hydroxylation of dopamine to noradrenaline (also known as norepinephrine), and is thus vital for regulation of these neurotransmitters.

Cellular Location

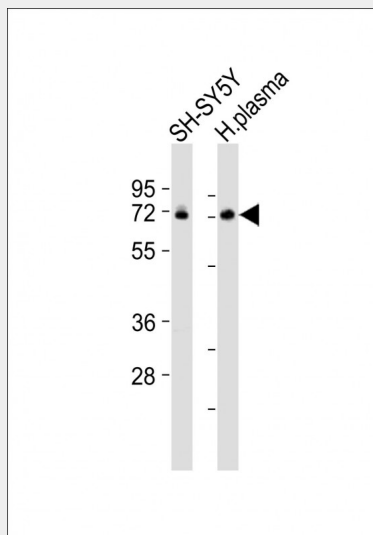
[Soluble dopamine beta-hydroxylase]: Cytoplasmic vesicle, secretory vesicle lumen Cytoplasmic vesicle, secretory vesicle, chromaffin granule lumen. Secreted

DBH Antibody (Center) - Protocols

Provided below are standard protocols that you may find useful for product applications.

- [Western Blot](#)
- [Blocking Peptides](#)
- [Dot Blot](#)
- [Immunohistochemistry](#)
- [Immunofluorescence](#)
- [Immunoprecipitation](#)
- [Flow Cytometry](#)
- [Cell Culture](#)

DBH Antibody (Center) - Images



All lanes : Anti-DBH Antibody (Center) at 1:2000 dilution Lane 1: SH-SY5Y whole cell lysates Lane 2: human plasma lysates Lysates/proteins at 20 µg per lane. Secondary Goat Anti-Rabbit IgG, (H+L), Peroxidase conjugated at 1/10000 dilution Predicted band size : 69 kDa Blocking/Dilution buffer: 5% NFDM/TBST.

DBH Antibody (Center) - Background

Conversion of dopamine to noradrenaline.

DBH Antibody (Center) - References

- Humphray S.J.,et al.Nature 429:369-374(2004).
Lamouroux A.,et al.EMBO J. 6:3931-3937(1987).
Kobayashi K.,et al.Nucleic Acids Res. 17:1089-1102(1989).
Li B.,et al.Biochem. J. 313:57-64(1996).
Liu T.,et al.J. Proteome Res. 4:2070-2080(2005).