

PORCN Antibody (Center)
Purified Rabbit Polyclonal Antibody (Pab)
Catalog # AP21406c

Specification

PORCN Antibody (Center) - Product Information

Application	WB,E
Primary Accession	O9H237
Reactivity	Mouse
Host	Rabbit
Clonality	polyclonal
Isotype	Rabbit IgG
Calculated MW	52318

PORCN Antibody (Center) - Additional Information

Gene ID 64840

Other Names

Protein-cysteine N-palmitoyltransferase porcupine, 231-, Protein MG61, PORCN, MG61, PORC, PPN

Target/Specificity

This PORCN antibody is generated from a rabbit immunized with a KLH conjugated synthetic peptide between 138-171 amino acids from the Central region of human PORCN.

Dilution

WB~~1:2000

Format

Purified polyclonal antibody supplied in PBS with 0.09% (W/V) sodium azide. This antibody is purified through a protein A column, followed by peptide affinity purification.

Storage

Maintain refrigerated at 2-8°C for up to 2 weeks. For long term storage store at -20°C in small aliquots to prevent freeze-thaw cycles.

Precautions

PORCN Antibody (Center) is for research use only and not for use in diagnostic or therapeutic procedures.

PORCN Antibody (Center) - Protein Information

Name PORCN ([HGNC:17652](#))

Function Protein-serine O-palmitoleoyltransferase that acts as a key regulator of the Wnt signaling pathway by mediating the attachment of palmitoleate, a 16-carbon monounsaturated fatty acid (C16:1(9Z)), to Wnt proteins. Serine palmitoleoylation of WNT proteins is required for efficient binding to frizzled receptors.

Cellular Location

Endoplasmic reticulum membrane {ECO:0000250|UniProtKB:Q9JJJ7}; Multi-pass membrane protein {ECO:0000250|UniProtKB:Q9JJJ7}

Tissue Location

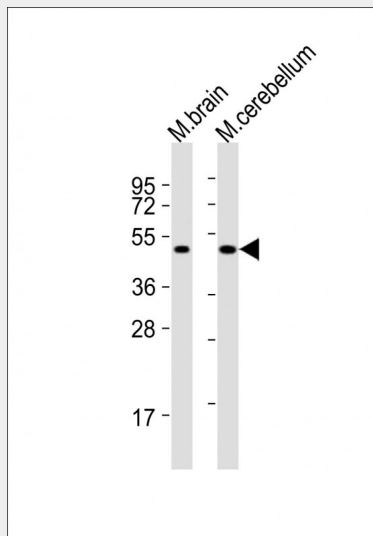
Isoform 1 is expressed in fetal brain, brain, amygdala, caudate nucleus, cerebellum, hippocampus, pituitary, thalamus, heart, skeletal muscle and testis. Isoform 4 is expressed in amygdala, corpus callosum, hippocampus, spinal cord, kidney, liver, lung, spleen, uterus, testis. Isoform 2 and isoform 3 are expressed in substantia nigra, spinal cord, heart and lung

PORCN Antibody (Center) - Protocols

Provided below are standard protocols that you may find useful for product applications.

- [Western Blot](#)
- [Blocking Peptides](#)
- [Dot Blot](#)
- [Immunohistochemistry](#)
- [Immunofluorescence](#)
- [Immunoprecipitation](#)
- [Flow Cytometry](#)
- [Cell Culture](#)

PORCN Antibody (Center) - Images



All lanes : Anti-PORCN Antibody (Center) at 1:2000 dilution Lane 1: mouse brain lysates Lane 2: mouse cerebellum lysates Lysates/proteins at 20 µg per lane. Secondary Goat Anti-Rabbit IgG, (H+L), Peroxidase conjugated at 1/10000 dilution Predicted band size : 52 kDa Blocking/Dilution buffer: 5% NFDN/TBST.

PORCN Antibody (Center) - Background

protein-cysteine N-palmitoyltransferase that modulates the processing of Wnt proteins by mediating serine palmitoylation of Wnt family members.

PORCN Antibody (Center) - References

Caricasole A., et al. Gene 288:147-157(2002).

Ota T., et al. Nat. Genet. 36:40-45(2004).

Ross M.T., et al. Nature 434:325-337(2005).

Mural R.J., et al. Submitted (JUL-2005) to the EMBL/GenBank/DDBJ databases.

Geraghty M.T., et al. Submitted (JAN-1993) to the EMBL/GenBank/DDBJ databases.