

PLXNB1 Antibody (C-term)
Purified Rabbit Polyclonal Antibody (Pab)
Catalog # AP21403b

Specification

PLXNB1 Antibody (C-term) - Product Information

Application	WB,E
Primary Accession	O43157
Reactivity	Human
Host	Rabbit
Clonality	polyclonal
Isotype	Rabbit IgG
Calculated MW	232298

PLXNB1 Antibody (C-term) - Additional Information

Gene ID 5364

Other Names

Plexin-B1, Semaphorin receptor SEP, PLXNB1, KIAA0407, PLXN5, SEP

Target/Specificity

This PLXNB1 antibody is generated from a rabbit immunized with a KLH conjugated synthetic peptide between 1715-1749 amino acids from the C-terminal region of human PLXNB1.

Dilution

WB~~1:2000

Format

Purified polyclonal antibody supplied in PBS with 0.09% (W/V) sodium azide. This antibody is purified through a protein A column, followed by peptide affinity purification.

Storage

Maintain refrigerated at 2-8°C for up to 2 weeks. For long term storage store at -20°C in small aliquots to prevent freeze-thaw cycles.

Precautions

PLXNB1 Antibody (C-term) is for research use only and not for use in diagnostic or therapeutic procedures.

PLXNB1 Antibody (C-term) - Protein Information

Name PLXNB1

Synonyms KIAA0407, PLXN5, SEP

Function Receptor for SEMA4D (PubMed:[19843518](#), PubMed:[20877282](#), PubMed:[21912513](#)). Plays a role in GABAergic synapse development (By similarity). Mediates SEMA4A- and

SEMA4D-dependent inhibitory synapse development (By similarity). Plays a role in RHOA activation and subsequent changes of the actin cytoskeleton (PubMed:[12196628](#), PubMed:[15210733](#)). Plays a role in axon guidance, invasive growth and cell migration (PubMed:[12198496](#)).

Cellular Location

[Isoform 1]: Cell membrane; Single-pass type I membrane protein [Isoform 3]: Secreted

Tissue Location

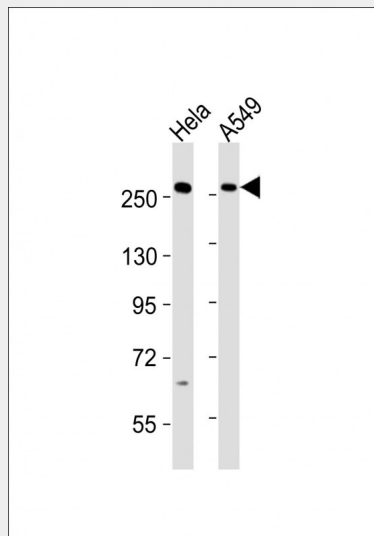
Highly expressed in fetal kidney, and at slightly lower levels in fetal brain, lung and liver

PLXNB1 Antibody (C-term) - Protocols

Provided below are standard protocols that you may find useful for product applications.

- [Western Blot](#)
- [Blocking Peptides](#)
- [Dot Blot](#)
- [Immunohistochemistry](#)
- [Immunofluorescence](#)
- [Immunoprecipitation](#)
- [Flow Cytometry](#)
- [Cell Culture](#)

PLXNB1 Antibody (C-term) - Images



All lanes : Anti-PLXNB1 Antibody (C-term) at 1:2000 dilution Lane 1: HeLa whole cell lysates Lane 2: A549 whole cell lysates Lysates/proteins at 20 µg per lane. Secondary Goat Anti-Rabbit IgG, (H+L), Peroxidase conjugated at 1/10000 dilution Predicted band size : 232 kDa Blocking/Dilution buffer: 5% NFDM/TBST.

PLXNB1 Antibody (C-term) - Background

Receptor for SEMA4D. Plays a role in RHOA activation and subsequent changes of the actin cytoskeleton. Plays a role in axon guidance, invasive growth and cell migration.

PLXNB1 Antibody (C-term) - References

Ishikawa K.,et al.DNA Res. 4:307-313(1997).
Tamagnone L.,et al.Cell 99:71-80(1999).
Tamagnone L.,et al.Cell 104:321-321(2001).
Maestrini E.,et al.Proc. Natl. Acad. Sci. U.S.A. 93:674-678(1996).
Mural R.J.,et al.Submitted (JUL-2005) to the EMBL/GenBank/DDBJ databases.