

BRP44L Antibody (C-term)
Purified Rabbit Polyclonal Antibody (Pab)
Catalog # AP21401b

Specification

BRP44L Antibody (C-term) - Product Information

Application	WB,E
Primary Accession	O9Y5U8
Reactivity	Human
Host	Rabbit
Clonality	polyclonal
Isotype	Rabbit IgG
Calculated MW	12347

BRP44L Antibody (C-term) - Additional Information

Gene ID 51660

Other Names

Mitochondrial pyruvate carrier 1, Brain protein 44-like protein, MPC1, BRP44L

Target/Specificity

This BRP44L antibody is generated from a rabbit immunized with a KLH conjugated synthetic peptide between 96-129 amino acids from the C-terminal region of human BRP44L.

Dilution

WB~~1:2000

Format

Purified polyclonal antibody supplied in PBS with 0.09% (W/V) sodium azide. This antibody is purified through a protein A column, followed by peptide affinity purification.

Storage

Maintain refrigerated at 2-8°C for up to 2 weeks. For long term storage store at -20°C in small aliquots to prevent freeze-thaw cycles.

Precautions

BRP44L Antibody (C-term) is for research use only and not for use in diagnostic or therapeutic procedures.

BRP44L Antibody (C-term) - Protein Information

Name MPC1

Synonyms BRP44L

Function Mediates the uptake of pyruvate into mitochondria.

Cellular Location

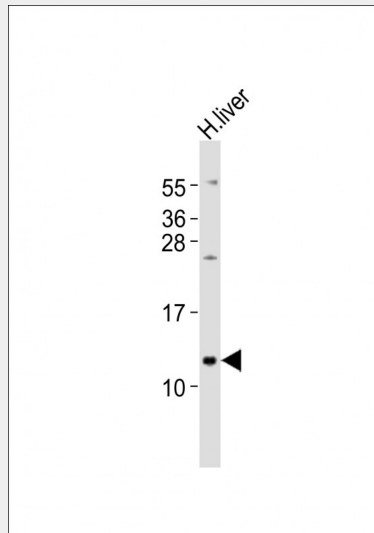
Mitochondrion inner membrane; Multi-pass membrane protein

BRP44L Antibody (C-term) - Protocols

Provided below are standard protocols that you may find useful for product applications.

- [Western Blot](#)
- [Blocking Peptides](#)
- [Dot Blot](#)
- [Immunohistochemistry](#)
- [Immunofluorescence](#)
- [Immunoprecipitation](#)
- [Flow Cytometry](#)
- [Cell Culture](#)

BRP44L Antibody (C-term) - Images



Anti-BRP44L Antibody (C-term) at 1:2000 dilution + human liver lysates Lysates/proteins at 20 µg per lane. Secondary Goat Anti-Rabbit IgG, (H+L), Peroxidase conjugated at 1/10000 dilution Predicted band size : 12 kDa Blocking/Dilution buffer: 5% NFD/MTBST.

BRP44L Antibody (C-term) - Background

Mediates the uptake of pyruvate into mitochondria.

BRP44L Antibody (C-term) - References

- Zhang Q.-H., et al. *Genome Res.* 10:1546-1560(2000).
Lai C.-H., et al. *Genome Res.* 10:703-713(2000).
Ota T., et al. *Nat. Genet.* 36:40-45(2004).
Mungall A.J., et al. *Nature* 425:805-811(2003).
Yu W.-Q., et al. Submitted (JUN-2000) to the EMBL/GenBank/DDBJ databases.