

LEFTY2 Antibody
Purified Rabbit Polyclonal Antibody (Pab)
Catalog # AP21395a

Specification

LEFTY2 Antibody - Product Information

Application	WB,E
Primary Accession	O00292
Reactivity	Human
Host	Rabbit
Clonality	polyclonal
Isotype	Rabbit IgG
Calculated MW	40920
Antigen Region	1-366

LEFTY2 Antibody - Additional Information

Gene ID 7044

Other Names

Left-right determination factor 2, Endometrial bleeding-associated factor, Left-right determination factor A, Protein lefty-2, Protein lefty-A, Transforming growth factor beta-4, TGF-beta-4, LEFTY2, EBAF, LEFTA, LEFTYA, TGFB4

Target/Specificity

This LEFTY2 antibody is generated from a rabbit immunized with a recombinant.

Dilution

WB~~1:8000

Format

Purified polyclonal antibody supplied in PBS with 0.09% (W/V) sodium azide. This antibody is purified through a protein A column, followed by peptide affinity purification.

Storage

Maintain refrigerated at 2-8°C for up to 2 weeks. For long term storage store at -20°C in small aliquots to prevent freeze-thaw cycles.

Precautions

LEFTY2 Antibody is for research use only and not for use in diagnostic or therapeutic procedures.

LEFTY2 Antibody - Protein Information

Name LEFTY2

Synonyms EBAF, LEFTA, LEFTYA, TGFB4

Function Required for left-right (L-R) asymmetry determination of organ systems in mammals.

May play a role in endometrial bleeding.

Cellular Location

Secreted.

Tissue Location

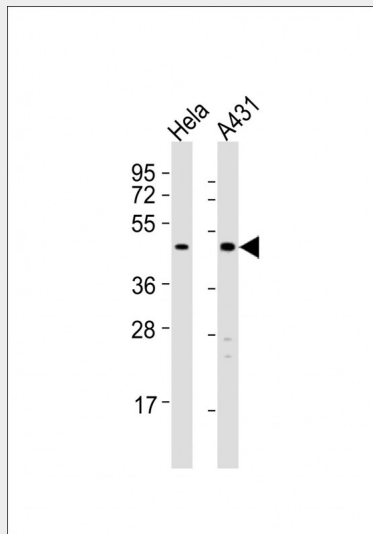
Mesenchymal cells of the endometrial stroma.

LEFTY2 Antibody - Protocols

Provided below are standard protocols that you may find useful for product applications.

- [Western Blot](#)
- [Blocking Peptides](#)
- [Dot Blot](#)
- [Immunohistochemistry](#)
- [Immunofluorescence](#)
- [Immunoprecipitation](#)
- [Flow Cytometry](#)
- [Cell Culture](#)

LEFTY2 Antibody - Images



All lanes : Anti-LEFTY2 Antibody at 1:8000 dilution Lane 1: HeLa whole cell lysates Lane 2: A431 whole cell lysates Lysates/proteins at 20 µg per lane. Secondary Goat Anti-Rabbit IgG, (H+L), Peroxidase conjugated at 1/10000 dilution Predicted band size : 41 kDa Blocking/Dilution buffer: 5% NFD/MTBST.

LEFTY2 Antibody - Background

Required for left-right (L-R) asymmetry determination of organ systems in mammals. May play a role in endometrial bleeding.

LEFTY2 Antibody - References

Kothapalli R., et al. J. Clin. Invest. 99:2342-2350(1997).
Kosaki K., et al. Am. J. Hum. Genet. 64:712-721(1999).

Ota T.,et al.Nat. Genet. 36:40-45(2004).
Otsuki T.,et al.DNA Res. 12:117-126(2005).
Gregory S.G.,et al.Nature 441:315-321(2006).