

**PYCRL Antibody (Center)**  
**Purified Rabbit Polyclonal Antibody (Pab)**  
**Catalog # AP21393c**

**Specification**

---

**PYCRL Antibody (Center) - Product Information**

Application	WB,E
Primary Accession	<a href="#">Q53H96</a>
Reactivity	Human
Host	Rabbit
Clonality	polyclonal
Isotype	Rabbit IgG
Calculated MW	28663

**PYCRL Antibody (Center) - Additional Information**

**Gene ID** 65263

**Other Names**

Pyrroline-5-carboxylate reductase 3, P5C reductase 3, P5CR 3, Pyrroline-5-carboxylate reductase-like protein, PYCRL

**Target/Specificity**

This PYCRL antibody is generated from a rabbit immunized with a KLH conjugated synthetic peptide between 139-171 amino acids from the Central region of human PYCRL.

**Dilution**

WB~~1:2000

**Format**

Purified polyclonal antibody supplied in PBS with 0.09% (W/V) sodium azide. This antibody is purified through a protein A column, followed by peptide affinity purification.

**Storage**

Maintain refrigerated at 2-8°C for up to 2 weeks. For long term storage store at -20°C in small aliquots to prevent freeze-thaw cycles.

**Precautions**

PYCRL Antibody (Center) is for research use only and not for use in diagnostic or therapeutic procedures.

**PYCRL Antibody (Center) - Protein Information**

**Name** PYCR3 ([HGNC:25846](#))

**Function** Enzyme that catalyzes the last step in proline biosynthesis. Proline is synthesized from either glutamate or ornithine; both are converted to pyrroline-5-carboxylate (P5C), and then to proline via pyrroline-5-carboxylate reductases (PYCRs). PYCRL is exclusively linked to the

conversion of ornithine to proline.

#### Cellular Location

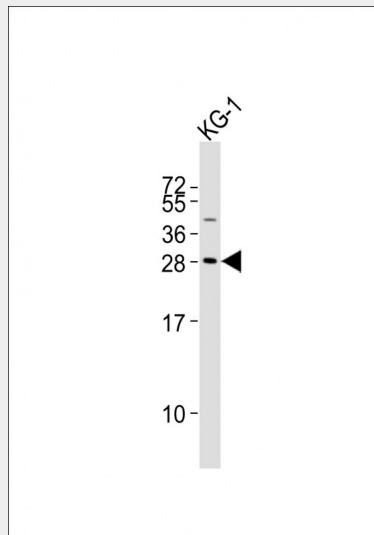
Cytoplasm.

#### PYCRL Antibody (Center) - Protocols

Provided below are standard protocols that you may find useful for product applications.

- [Western Blot](#)
- [Blocking Peptides](#)
- [Dot Blot](#)
- [Immunohistochemistry](#)
- [Immunofluorescence](#)
- [Immunoprecipitation](#)
- [Flow Cytometry](#)
- [Cell Culture](#)

#### PYCRL Antibody (Center) - Images



Anti-PYCRL Antibody (Center) at 1:2000 dilution + KG-1 whole cell lysates. Lysates/proteins at 20  $\mu$ g per lane. Secondary Goat Anti-Rabbit IgG, (H+L), Peroxidase conjugated at 1/10000 dilution. Predicted band size : 29 kDa. Blocking/Dilution buffer: 5% NFD/MTBST.

#### PYCRL Antibody (Center) - References

- Ota T., et al. Nat. Genet. 36:40-45(2004).  
Nusbaum C., et al. Nature 439:331-335(2006).  
Suzuki Y., et al. Submitted (APR-2005) to the EMBL/GenBank/DDBJ databases.  
Bechtel S., et al. BMC Genomics 8:399-399(2007).  
Burkard T.R., et al. BMC Syst. Biol. 5:17-17(2011).