

(DANRE) atg5 Antibody (Center)
Purified Rabbit Polyclonal Antibody (Pab)
Catalog # AP21388c

Specification

(DANRE) atg5 Antibody (Center) - Product Information

Application	WB,E
Primary Accession	Q6DEM4
Reactivity	Mouse
Host	Rabbit
Clonality	polyclonal
Isotype	Rabbit IgG

(DANRE) atg5 Antibody (Center) - Additional Information

Other Names

Autophagy protein 5 , Q6DEM4

Target/Specificity

This DANRE atg5 antibody is generated from a rabbit immunized with a KLH conjugated synthetic peptide between 167-199 amino acids from the Central region of DANRE atg5.

Dilution

WB~~1:4000

Format

Purified polyclonal antibody supplied in PBS with 0.09% (W/V) sodium azide. This antibody is purified through a protein A column, followed by peptide affinity purification.

Storage

Maintain refrigerated at 2-8°C for up to 2 weeks. For long term storage store at -20°C in small aliquots to prevent freeze-thaw cycles.

Precautions

(DANRE) atg5 Antibody (Center) is for research use only and not for use in diagnostic or therapeutic procedures.

(DANRE) atg5 Antibody (Center) - Protein Information

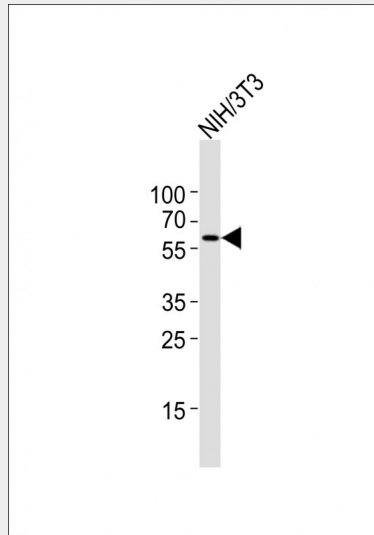
(DANRE) atg5 Antibody (Center) - Protocols

Provided below are standard protocols that you may find useful for product applications.

- [Western Blot](#)
- [Blocking Peptides](#)
- [Dot Blot](#)

- [Immunohistochemistry](#)
- [Immunofluorescence](#)
- [Immunoprecipitation](#)
- [Flow Cytometry](#)
- [Cell Culture](#)

(DANRE) atg5 Antibody (Center) - Images



Anti-atg5 Antibody (Center) at 1:4000 dilution + NIH/3T3 whole cell lysates Lysates/proteins at 20 μ g per lane. Secondary Goat Anti-Rabbit IgG, (H+L), Peroxidase conjugated at 1/10000 dilution
Predicted band size : 32 kDa Blocking/Dilution buffer: 5% NFD/MTBST.

(DANRE) atg5 Antibody (Center) - Background

Involved in autophagic vesicle formation.