

**NFE4 Antibody (Center)**  
**Purified Rabbit Polyclonal Antibody (Pab)**  
**Catalog # AP21387c**

**Specification**

---

**NFE4 Antibody (Center) - Product Information**

Application	WB,E
Primary Accession	<a href="#">Q86UQ8</a>
Reactivity	Human
Host	Rabbit
Clonality	polyclonal
Isotype	Rabbit IgG
Calculated MW	19019
Antigen Region	102-136

**NFE4 Antibody (Center) - Additional Information**

**Other Names**

Transcription factor NF-E4, NFE4

**Target/Specificity**

This NFE4 antibody is generated from a rabbit immunized with a KLH conjugated synthetic peptide between 102-136 amino acids from the Central region of human NFE4.

**Dilution**

WB~~1:2000

**Format**

Purified polyclonal antibody supplied in PBS with 0.09% (W/V) sodium azide. This antibody is purified through a protein A column, followed by peptide affinity purification.

**Storage**

Maintain refrigerated at 2-8°C for up to 2 weeks. For long term storage store at -20°C in small aliquots to prevent freeze-thaw cycles.

**Precautions**

NFE4 Antibody (Center) is for research use only and not for use in diagnostic or therapeutic procedures.

**NFE4 Antibody (Center) - Protein Information**

**Name** NFE4

**Function** Functions as part of the SSP (stage selector protein) complex, a complex that contributes to the preferential expression of the gamma-gene in fetal erythroid cells by facilitating the interaction of the gamma-globin genes with enhancer elements contained in the locus control region (LCR). The complex binds to the stage selector element (SSE) in the proximal gamma-globin promoter. In contrast, isoform 2 acts as a repressor of gamma-globin gene

expression by preventing NFE2 and RNA polymerase II recruitment to the promoter.

### Cellular Location

Nucleus.

### Tissue Location

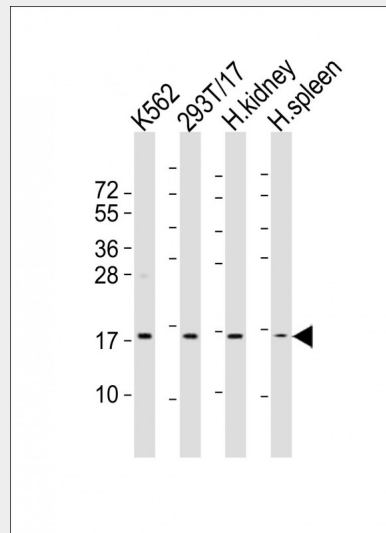
Specifically expressed in fetal liver, cord blood and bone marrow. Also expressed in the K562 and HEL cell lines, which constitutively express the fetal globin genes

## NFE4 Antibody (Center) - Protocols

Provided below are standard protocols that you may find useful for product applications.

- [Western Blot](#)
- [Blocking Peptides](#)
- [Dot Blot](#)
- [Immunohistochemistry](#)
- [Immunofluorescence](#)
- [Immunoprecipitation](#)
- [Flow Cytometry](#)
- [Cell Culture](#)

## NFE4 Antibody (Center) - Images



All lanes : Anti-NFE4 Antibody (Center) at 1:2000 dilution Lane 1: K562 whole cell lysates Lane 2: 293T/17 whole cell lysates Lane 3: human kidney lysates Lane 4: human spleen lysates Lysates/proteins at 20 µg per lane. Secondary Goat Anti-Rabbit IgG, (H+L), Peroxidase conjugated at 1/10000 dilution Predicted band size : 19 kDa Blocking/Dilution buffer: 5% NFDN/TBST.

## NFE4 Antibody (Center) - Background

Functions as part of the SSP (stage selector protein) complex, a complex that contributes to the preferential expression of the gamma-gene in fetal erythroid cells by facilitating the interaction of the gamma-globin genes with enhancer elements contained in the locus control region (LCR). The complex binds to the stage selector element (SSE) in the proximal gamma-globin promoter. In contrast, isoform 2 acts as a repressor of gamma-globin gene expression by preventing NFE2 and RNA polymerase II recruitment to the promoter.

**NFE4 Antibody (Center) - References**

- Zhou W.,et al.Mol. Cell. Biol. 20:7662-7672(2000).  
Hillier L.W.,et al.Nature 424:157-164(2003).  
Zhao Q.,et al.Blood 107:2138-2145(2006).  
Zhou W.,et al.J. Biol. Chem. 279:26227-26232(2004).  
Zhao Q.,et al.J. Biol. Chem. 279:41477-41486(2004).