

HPN Antibody (Center)
Purified Rabbit Polyclonal Antibody (Pab)
Catalog # AP21383c

Specification

HPN Antibody (Center) - Product Information

Application	WB,E
Primary Accession	P05981
Reactivity	Human
Host	Rabbit
Clonality	polyclonal
Isotype	Rabbit IgG
Calculated MW	45011

HPN Antibody (Center) - Additional Information

Gene ID 3249

Other Names

Serine protease hepsin, Transmembrane protease serine 1, Serine protease hepsin non-catalytic chain, Serine protease hepsin catalytic chain, HPN, Tmprss1

Target/Specificity

This HPN antibody is generated from a rabbit immunized with a KLH conjugated synthetic peptide between 153-188 amino acids from the Central region of human HPN.

Dilution

WB~~1:2000

Format

Purified polyclonal antibody supplied in PBS with 0.09% (W/V) sodium azide. This antibody is purified through a protein A column, followed by peptide affinity purification.

Storage

Maintain refrigerated at 2-8°C for up to 2 weeks. For long term storage store at -20°C in small aliquots to prevent freeze-thaw cycles.

Precautions

HPN Antibody (Center) is for research use only and not for use in diagnostic or therapeutic procedures.

HPN Antibody (Center) - Protein Information

Name HPN

Synonyms Tmprss1

Function Serine protease that cleaves extracellular substrates, and contributes to the proteolytic

processing of growth factors, such as HGF and MST1/HGFL (PubMed:[15839837](#), PubMed:[21875933](#)). Plays a role in cell growth and maintenance of cell morphology (PubMed:[21875933](#), PubMed:[8346233](#)). Plays a role in the proteolytic processing of ACE2 (PubMed:[24227843](#)). Mediates the proteolytic cleavage of urinary UMOD that is required for UMOD polymerization (PubMed:[26673890](#)).

Cellular Location

Cell membrane; Single-pass type II membrane protein Apical cell membrane; Single-pass type II membrane protein

Tissue Location

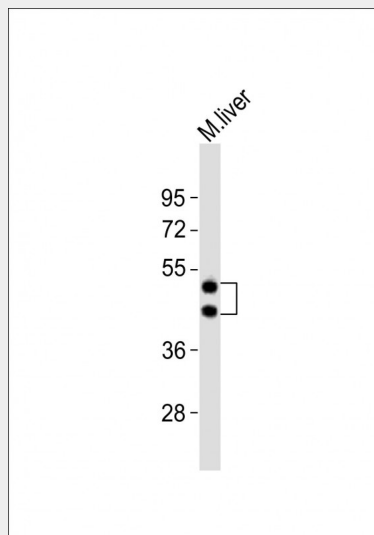
Detected in liver and kidney.

HPN Antibody (Center) - Protocols

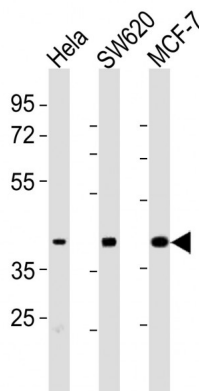
Provided below are standard protocols that you may find useful for product applications.

- [Western Blot](#)
- [Blocking Peptides](#)
- [Dot Blot](#)
- [Immunohistochemistry](#)
- [Immunofluorescence](#)
- [Immunoprecipitation](#)
- [Flow Cytometry](#)
- [Cell Culture](#)

HPN Antibody (Center) - Images



Anti-HPN Antibody (Center) at 1:2000 dilution + mouse liver lysates Lysates/proteins at 20 µg per lane. Secondary Goat Anti-Rabbit IgG, (H+L), Peroxidase conjugated at 1/10000 dilution Predicted band size : 45 kDa Blocking/Dilution buffer: 5% NFDM/TBST.



All lanes : Anti-HPN Antibody (Center) at 1:2000 dilution Lane 1: HeLa whole cell lysates Lane 2: SW620 whole cell lysates Lane 3: MCF-7 whole cell lysates Lysates/proteins at 20 µg per lane. Secondary Goat Anti-Rabbit IgG, (H+L), Peroxidase conjugated at 1/10000 dilution Predicted band size : 45 kDa Blocking/Dilution buffer: 5% NFDM/TBST.

HPN Antibody (Center) - Background

Plays an essential role in cell growth and maintenance of cell morphology. May mediate the activating cleavage of HGF and MST1/HGFL. Plays a role in the proteolytic processing of ACE2.

HPN Antibody (Center) - References

- Leytus S.P.,et al.Biochemistry 27:1067-1074(1988).
- Ota T.,et al.Nat. Genet. 36:40-45(2004).
- Tsuji A.,et al.J. Biol. Chem. 266:16948-16953(1991).
- Torres-Rosado A.,et al.Proc. Natl. Acad. Sci. U.S.A. 90:7181-7185(1993).
- Chen R.,et al.J. Proteome Res. 8:651-661(2009).