

**P2ry4 Antibody (N-term)**  
**Purified Rabbit Polyclonal Antibody (Pab)**  
**Catalog # AP21371a**

## Specification

---

### P2ry4 Antibody (N-term) - Product Information

|                   |                        |
|-------------------|------------------------|
| Application       | WB,E                   |
| Primary Accession | <a href="#">O9JJS7</a> |
| Reactivity        | Mouse, Rat             |
| Host              | Rabbit                 |
| Clonality         | polyclonal             |
| Isotype           | Rabbit IgG             |

### P2ry4 Antibody (N-term) - Additional Information

**Gene ID** 57385

#### Other Names

P2Y purinoceptor 4, P2Y4, P2ry4, P2y4r

#### Target/Specificity

This P2ry4 antibody is generated from a rabbit immunized with a KLH conjugated synthetic peptide between 5-42 amino acids from the N-terminal region of human P2ry4.

#### Dilution

WB~~1:2000

#### Format

Purified polyclonal antibody supplied in PBS with 0.09% (W/V) sodium azide. This antibody is purified through a protein A column, followed by peptide affinity purification.

#### Storage

Maintain refrigerated at 2-8°C for up to 2 weeks. For long term storage store at -20°C in small aliquots to prevent freeze-thaw cycles.

#### Precautions

P2ry4 Antibody (N-term) is for research use only and not for use in diagnostic or therapeutic procedures.

### P2ry4 Antibody (N-term) - Protein Information

**Name** P2ry4

**Synonyms** P2y4r

**Function** Receptor for ATP and UTP coupled to G-proteins that activate a phosphatidylinositol-calcium second messenger system.

**Cellular Location**

Cell membrane; Multi-pass membrane protein.

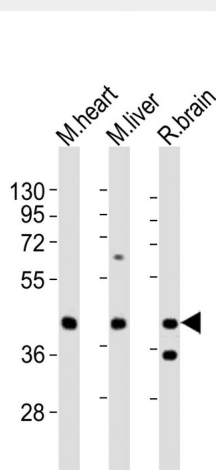
**Tissue Location**

Expressed in the liver, intestine, stomach, bladder and lung

**P2ry4 Antibody (N-term) - Protocols**

Provided below are standard protocols that you may find useful for product applications.

- [Western Blot](#)
- [Blocking Peptides](#)
- [Dot Blot](#)
- [Immunohistochemistry](#)
- [Immunofluorescence](#)
- [Immunoprecipitation](#)
- [Flow Cytometry](#)
- [Cell Culture](#)

**P2ry4 Antibody (N-term) - Images**

All lanes : Anti-P2ry4 Antibody (N-term) at 1:2000 dilution Lane 1: mouse heart lysates Lane 2: mouse liver lysates Lane 3: rat brain lysates Lysates/proteins at 20 µg per lane. Secondary Goat Anti-Rabbit IgG, (H+L), Peroxidase conjugated at 1/10000 dilution Predicted band size : 41 kDa Blocking/Dilution buffer: 5% NFDM/TBST.

**P2ry4 Antibody (N-term) - Background**

Receptor for ATP and UTP coupled to G-proteins that activate a phosphatidylinositol-calcium second messenger system.

**P2ry4 Antibody (N-term) - References**

Suarez-Huerta N., et al. Eur. J. Pharmacol. 416:197-202(2001).  
Carninci P., et al. Science 309:1559-1563(2005).