

KCNMB2 Antibody (C-term)
Purified Rabbit Polyclonal Antibody (Pab)
Catalog # AP21356b

Specification

KCNMB2 Antibody (C-term) - Product Information

Application	WB,E
Primary Accession	O9Y691
Reactivity	Human, Mouse, Rat
Host	Rabbit
Clonality	polyclonal
Isotype	Rabbit IgG
Calculated MW	27130

KCNMB2 Antibody (C-term) - Additional Information

Gene ID 10242

Other Names

Calcium-activated potassium channel subunit beta-2, BK channel subunit beta-2, BKbeta2, Hbeta2, Calcium-activated potassium channel, subfamily M subunit beta-2, Charybdotoxin receptor subunit beta-2, Hbeta3, K(VCA)beta-2, Maxi K channel subunit beta-2, Slo-beta-2, KCNMB2

Target/Specificity

This KCNMB2 antibody is generated from a rabbit immunized with a KLH conjugated synthetic peptide between 174-189 amino acids from the C-terminal region of human KCNMB2.

Dilution

WB~~1:2000

Format

Purified polyclonal antibody supplied in PBS with 0.09% (W/V) sodium azide. This antibody is purified through a protein A column, followed by peptide affinity purification.

Storage

Maintain refrigerated at 2-8°C for up to 2 weeks. For long term storage store at -20°C in small aliquots to prevent freeze-thaw cycles.

Precautions

KCNMB2 Antibody (C-term) is for research use only and not for use in diagnostic or therapeutic procedures.

KCNMB2 Antibody (C-term) - Protein Information

Name KCNMB2

Function Regulatory subunit of the calcium activated potassium KCNMA1 (maxiK) channel. Modulates the calcium sensitivity and gating kinetics of KCNMA1, thereby contributing to KCNMA1

channel diversity. Acts as a negative regulator that confers rapid and complete inactivation of KCNMA1 channel complex. May participate in KCNMA1 inactivation in chromaffin cells of the adrenal gland or in hippocampal CA1 neurons.

Cellular Location

Membrane; Multi-pass membrane protein.

Tissue Location

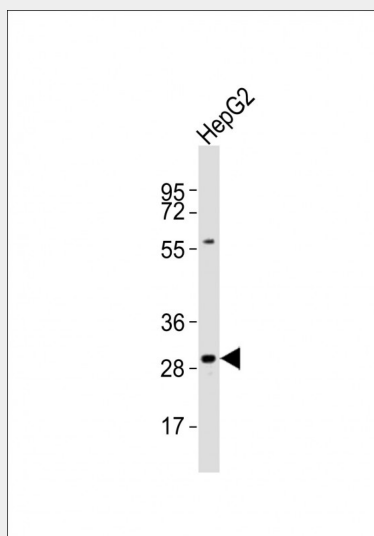
Expressed in kidney, heart and brain. Highly expressed in ovary. Expressed at low level in other tissues

KCNMB2 Antibody (C-term) - Protocols

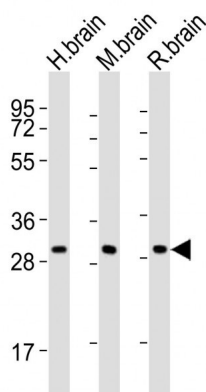
Provided below are standard protocols that you may find useful for product applications.

- [Western Blot](#)
- [Blocking Peptides](#)
- [Dot Blot](#)
- [Immunohistochemistry](#)
- [Immunofluorescence](#)
- [Immunoprecipitation](#)
- [Flow Cytometry](#)
- [Cell Culture](#)

KCNMB2 Antibody (C-term) - Images



Anti-KCNMB2 Antibody (C-term) at 1:1000 dilution + HepG2 whole cell lysates Lysates/proteins at 20 µg per lane. Secondary Goat Anti-Rabbit IgG, (H+L), Peroxidase conjugated at 1/10000 dilution Predicted band size : 27 kDa Blocking/Dilution buffer: 5% NFDN/TBST.



All lanes : Anti-KCNMB2 Antibody (C-term) at 1:2000 dilution Lane 1: human brain lysates Lane 2: mouse brain lysates Lane 3: rat brain lysates Lysates/proteins at 20 µg per lane. Secondary Goat Anti-Rabbit IgG, (H+L), Peroxidase conjugated at 1/10000 dilution Predicted band size : 27 kDa Blocking/Dilution buffer: 5% NFD/MTBST.

KCNMB2 Antibody (C-term) - Background

Regulatory subunit of the calcium activated potassium KCNMA1 (maxiK) channel. Modulates the calcium sensitivity and gating kinetics of KCNMA1, thereby contributing to KCNMA1 channel diversity. Acts as a negative regulator that confers rapid and complete inactivation of KCNMA1 channel complex. May participate in KCNMA1 inactivation in chromaffin cells of the adrenal gland or in hippocampal CA1 neurons.

KCNMB2 Antibody (C-term) - References

- Wallner M.,et al.Proc. Natl. Acad. Sci. U.S.A. 96:4137-4142(1999).
- Brenner R.,et al.J. Biol. Chem. 275:6453-6461(2000).
- Xia X.-M.,et al.J. Neurosci. 19:5255-5264(1999).
- Meera P.,et al.Proc. Natl. Acad. Sci. U.S.A. 97:5562-5567(2000).
- Xia X.-M.,et al.J. Gen. Physiol. 121:125-148(2003).