

**ITGA3 Antibody (C-term)**  
**Purified Rabbit Polyclonal Antibody (Pab)**  
**Catalog # AP21353b**

**Specification**

---

**ITGA3 Antibody (C-term) - Product Information**

Application	<b>WB,E</b>
Primary Accession	<a href="#">P26006</a>
Reactivity	<b>Human</b>
Host	<b>Rabbit</b>
Clonality	<b>polyclonal</b>
Isotype	<b>Rabbit IgG</b>
Calculated MW	<b>116612</b>

**ITGA3 Antibody (C-term) - Additional Information**

**Gene ID** 3675

**Other Names**

Integrin alpha-3, CD49 antigen-like family member C, FRP-2, Galactoprotein B3, GAPB3, VLA-3 subunit alpha, CD49c, Integrin alpha-3 heavy chain, Integrin alpha-3 light chain, ITGA3, MSK18

**Target/Specificity**

This ITGA3 antibody is generated from a rabbit immunized with a KLH conjugated synthetic peptide between 875-909 amino acids from the C-terminal region of human ITGA3.

**Dilution**

WB~~1:2000

**Format**

Purified polyclonal antibody supplied in PBS with 0.09% (W/V) sodium azide. This antibody is purified through a protein A column, followed by peptide affinity purification.

**Storage**

Maintain refrigerated at 2-8°C for up to 2 weeks. For long term storage store at -20°C in small aliquots to prevent freeze-thaw cycles.

**Precautions**

ITGA3 Antibody (C-term) is for research use only and not for use in diagnostic or therapeutic procedures.

**ITGA3 Antibody (C-term) - Protein Information**

**Name** ITGA3

**Synonyms** MSK18

**Function** Integrin alpha-3/beta-1 is a receptor for fibronectin, laminin, collagen, epiligrin,

thrombospondin and CSPG4. Integrin alpha-3/beta-1 provides a docking site for FAP (seprase) at invadopodia plasma membranes in a collagen-dependent manner and hence may participate in the adhesion, formation of invadopodia and matrix degradation processes, promoting cell invasion. Alpha-3/beta-1 may mediate with LGALS3 the stimulation by CSPG4 of endothelial cells migration.

#### Cellular Location

Cell membrane; Single-pass type I membrane protein. Cell membrane; Lipid- anchor. Cell projection, invadopodium membrane; Single-pass type I membrane protein. Cell projection, filopodium membrane; Single-pass type I membrane protein. Note=Enriched preferentially at invadopodia, cell membrane protrusions that correspond to sites of cell invasion, in a collagen-dependent manner.

#### Tissue Location

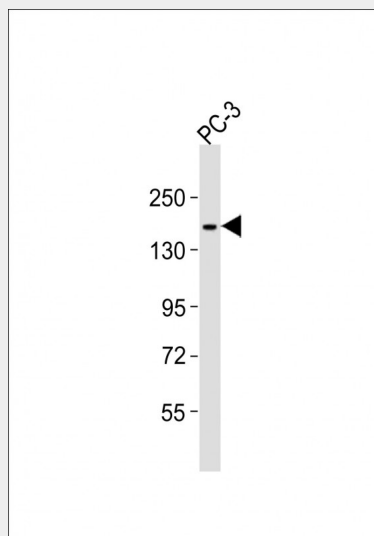
Isoform 1 is widely expressed. Isoform 2 is expressed in brain and heart. In brain, both isoforms are exclusively expressed on vascular smooth muscle cells, whereas in heart isoform 1 is strongly expressed on vascular smooth muscle cells, isoform 2 is detected only on endothelial vein cells.

### ITGA3 Antibody (C-term) - Protocols

Provided below are standard protocols that you may find useful for product applications.

- [Western Blot](#)
- [Blocking Peptides](#)
- [Dot Blot](#)
- [Immunohistochemistry](#)
- [Immunofluorescence](#)
- [Immunoprecipitation](#)
- [Flow Cytometry](#)
- [Cell Culture](#)

### ITGA3 Antibody (C-term) - Images



Anti-ITGA3 Antibody (C-term) at 1:2000 dilution + PC-3 whole cell lysates Lysates/proteins at 20 µg per lane. Secondary Goat Anti-Rabbit IgG, (H+L), Peroxidase conjugated at 1/10000 dilution Predicted band size : 117 kDa Blocking/Dilution buffer: 5% NFDM/TBST.

### ITGA3 Antibody (C-term) - Background

Integrin alpha-3/beta-1 is a receptor for fibronectin, laminin, collagen, epiligrin, thrombospondin and CSPG4. Integrin alpha-3/beta-1 provides a docking site for FAP (seprase) at invadopodia plasma membranes in a collagen-dependent manner and hence may participate in the adhesion, formation of invadopodia and matrix degradation processes, promoting cell invasion. Alpha- 3/beta-1 may mediate with LGALS3 the stimulation by CSPG4 of endothelial cells migration.

#### **ITGA3 Antibody (C-term) - References**

- Takada Y.,et al.J. Cell Biol. 115:257-266(1991).  
Ota T.,et al.Nat. Genet. 36:40-45(2004).  
Zody M.C.,et al.Nature 440:1045-1049(2006).  
Mural R.J.,et al.Submitted (SEP-2005) to the EMBL/GenBank/DDBJ databases.  
Tsuji T.,et al.J. Biochem. 109:659-665(1991).