

**NRXN1 Antibody (N-term)**  
**Purified Rabbit Polyclonal Antibody (Pab)**  
**Catalog # AP21335a**

**Specification**

---

**NRXN1 Antibody (N-term) - Product Information**

Application	WB,E
Primary Accession	<a href="#">P58400</a>
Reactivity	Human, Mouse, Rat
Host	Rabbit
Clonality	polyclonal
Isotype	Rabbit IgG
Antigen Region	77-110

**NRXN1 Antibody (N-term) - Additional Information**

**Gene ID** 9378

**Other Names**

Neurexin-1-beta, Neurexin I-beta, NRXN1

**Target/Specificity**

This NRXN1 antibody is generated from a rabbit immunized with a KLH conjugated synthetic peptide between 77-110 amino acids from the N-terminal region of human NRXN1.

**Dilution**

WB~~1:2000

**Format**

Purified polyclonal antibody supplied in PBS with 0.09% (W/V) sodium azide. This antibody is purified through a protein A column, followed by peptide affinity purification.

**Storage**

Maintain refrigerated at 2-8°C for up to 2 weeks. For long term storage store at -20°C in small aliquots to prevent freeze-thaw cycles.

**Precautions**

NRXN1 Antibody (N-term) is for research use only and not for use in diagnostic or therapeutic procedures.

**NRXN1 Antibody (N-term) - Protein Information**

**Name** NRXN1 ([HGNC:8008](#))

**Function** Neuronal cell surface protein involved in cell recognition and cell adhesion by forming intracellular junctions through binding to neuroligins. Plays a role in formation of synaptic junctions.

### Cellular Location

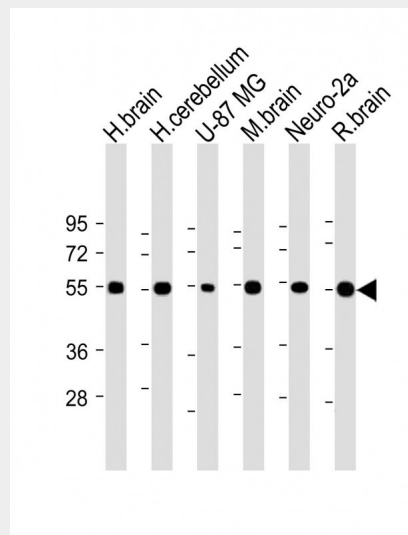
Presynaptic cell membrane {ECO:0000250|UniProtKB:Q63373}; Single-pass type I membrane protein {ECO:0000250|UniProtKB:Q63373}

### NRXN1 Antibody (N-term) - Protocols

Provided below are standard protocols that you may find useful for product applications.

- [Western Blot](#)
- [Blocking Peptides](#)
- [Dot Blot](#)
- [Immunohistochemistry](#)
- [Immunofluorescence](#)
- [Immunoprecipitation](#)
- [Flow Cytometry](#)
- [Cell Culture](#)

### NRXN1 Antibody (N-term) - Images



All lanes : Anti-NRXN1 Antibody (N-term) at 1:2000 dilution Lane 1: Human brain lysate Lane 2: Human cerebellum lysate Lane 3: U-87 MG whole cell lysate Lane 4: Mouse brain lysate Lane 5: Neuro-2a whole cell lysate Lane 6: Rat brain lysate Lysates/proteins at 20 µg per lane. Secondary Goat Anti-Rabbit IgG, (H+L), Peroxidase conjugated at 1/10000 dilution. Predicted band size : 50 kDa Blocking/Dilution buffer: 5% NFD/MTBST.

### NRXN1 Antibody (N-term) - Background

Neuronal cell surface protein that may be involved in cell recognition and cell adhesion by forming intracellular junctions through binding to neuroligins. May play a role in formation or maintenance of synaptic junctions. May mediate intracellular signaling. May play a role in angiogenesis (By similarity).

### NRXN1 Antibody (N-term) - References

- Kleiderlein J.J.,et al.Hum. Genet. 103:666-673(1998).  
Hillier L.W.,et al.Nature 434:724-731(2005).  
Chen X.,et al.Nat. Struct. Mol. Biol. 15:50-56(2008).

