

ADAM15 Antibody (N-Term)
Purified Rabbit Polyclonal Antibody (Pab)
Catalog # AP21324a

Specification

ADAM15 Antibody (N-Term) - Product Information

Application	WB,E
Primary Accession	Q13444
Reactivity	Human
Host	Rabbit
Clonality	polyclonal
Isotype	Rabbit IgG

ADAM15 Antibody (N-Term) - Additional Information

Gene ID 8751

Other Names

Disintegrin and metalloproteinase domain-containing protein 15, ADAM 15, 3424-, Metalloprotease RGD disintegrin protein, Metalloproteinase-like, disintegrin-like, and cysteine-rich protein 15, MDC-15, Metargidin, ADAM15, MDC15

Target/Specificity

This ADAM15 antibody is generated from a rabbit immunized with a KLH conjugated synthetic peptide between 37-72 amino acids of human ADAM15.

Dilution

WB~~1:2000

Format

Purified polyclonal antibody supplied in PBS with 0.09% (W/V) sodium azide. This antibody is purified through a protein A column, followed by peptide affinity purification.

Storage

Maintain refrigerated at 2-8°C for up to 2 weeks. For long term storage store at -20°C in small aliquots to prevent freeze-thaw cycles.

Precautions

ADAM15 Antibody (N-Term) is for research use only and not for use in diagnostic or therapeutic procedures.

ADAM15 Antibody (N-Term) - Protein Information

Name ADAM15

Synonyms MDC15

Function Active metalloproteinase with gelatinolytic and collagenolytic activity. Plays a role in the

wound healing process. Mediates both heterotypic intraepithelial cell/T-cell interactions and homotypic T-cell aggregation. Inhibits beta-1 integrin-mediated cell adhesion and migration of airway smooth muscle cells. Suppresses cell motility on or towards fibronectin possibly by driving alpha-v/beta-1 integrin (ITAGV-ITGB1) cell surface expression via ERK1/2 inactivation. Cleaves E-cadherin in response to growth factor deprivation. Plays a role in glomerular cell migration. Plays a role in pathological neovascularization. May play a role in cartilage remodeling. May be proteolytically processed, during sperm epididymal maturation and the acrosome reaction. May play a role in sperm-egg binding through its disintegrin domain.

Cellular Location

Endomembrane system; Single-pass type I membrane protein. Cell junction, adherens junction. Cell projection, cilium, flagellum. Cytoplasmic vesicle, secretory vesicle, acrosome. Note=The majority of the protein is localized in a perinuclear compartment which may correspond to the trans-Golgi network or the late endosome. The pro-protein is the major detectable form on the cell surface, whereas the majority of the protein in the cell is processed (By similarity).

Tissue Location

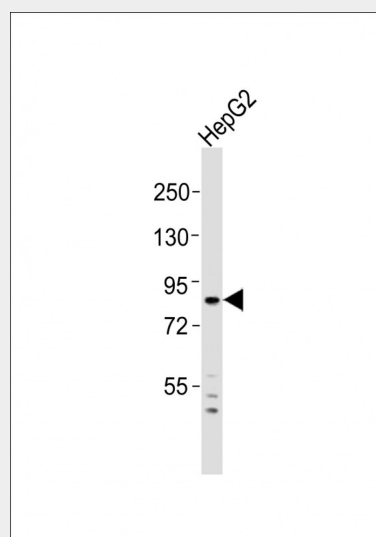
Expressed in colon and small intestine. Expressed in airway smooth muscle and glomerular mesangial cells (at protein level). Ubiquitously expressed. Overexpressed in atherosclerotic lesions. Constitutively expressed in cultured endothelium and smooth muscle. Expressed in chondrocytes. Expressed in airway smooth muscle and glomerular mesangial cells.

ADAM15 Antibody (N-Term) - Protocols

Provided below are standard protocols that you may find useful for product applications.

- [Western Blot](#)
- [Blocking Peptides](#)
- [Dot Blot](#)
- [Immunohistochemistry](#)
- [Immunofluorescence](#)
- [Immunoprecipitation](#)
- [Flow Cytometry](#)
- [Cell Culture](#)

ADAM15 Antibody (N-Term) - Images



Anti-ADAM15 Antibody (N-Term) at 1:2000 dilution + HepG2 whole cell lysates Lysates/proteins at 20 µg per lane. Secondary Goat Anti-Rabbit IgG, (H+L), Peroxidase conjugated at 1/10000 dilution
Predicted band size : 93 kDa Blocking/Dilution buffer: 5% NFDM/TBST.

ADAM15 Antibody (N-Term) - Background

Active metalloproteinase with gelatinolytic and collagenolytic activity. Plays a role in the wound healing process. Mediates both heterotypic intraepithelial cell/T-cell interactions and homotypic T-cell aggregation. Inhibits beta-1 integrin-mediated cell adhesion and migration of airway smooth muscle cells. Suppresses cell motility on or towards fibronectin possibly by driving alpha-v/beta-1 integrin (ITAGV-ITGB1) cell surface expression via ERK1/2 inactivation. Cleaves E-cadherin in response to growth factor deprivation. Plays a role in glomerular cell migration. Plays a role in pathological neovascularization. May play a role in cartilage remodeling. May be proteolytically processed, during sperm epididymal maturation and the acrosome reaction. May play a role in sperm-egg binding through its disintegrin domain.

ADAM15 Antibody (N-Term) - References

Kraetzschmar J., et al. J. Biol. Chem. 271:4593-4596(1996).
Herren B., et al. FASEB J. 11:173-180(1997).
Charrier L., et al. Am. J. Physiol. 288:G346-G353(2005).
Kleino I., et al. BMC Mol. Biol. 8:90-90(2007).
Zhong J.L., et al. Mol. Cancer Res. 6:383-394(2008).