

(Mouse) Scx Antibody (C-term)
Purified Rabbit Polyclonal Antibody (Pab)
Catalog # AP21316b

Specification

(Mouse) Scx Antibody (C-term) - Product Information

Application	WB,E
Primary Accession	O64124
Reactivity	Mouse
Host	Rabbit
Clonality	polyclonal
Isotype	Rabbit IgG
Calculated MW	22239
Antigen Region	172-205

(Mouse) Scx Antibody (C-term) - Additional Information

Gene ID 20289

Other Names

Basic helix-loop-helix transcription factor scleraxis, Scx

Target/Specificity

This Mouse Scx antibody is generated from a rabbit immunized with a KLH conjugated synthetic peptide between 172-205 amino acids from the C-terminal region of Mouse Scx.

Dilution

WB~~1:1000

Format

Purified polyclonal antibody supplied in PBS with 0.09% (W/V) sodium azide. This antibody is purified through a protein A column, followed by peptide affinity purification.

Storage

Maintain refrigerated at 2-8°C for up to 2 weeks. For long term storage store at -20°C in small aliquots to prevent freeze-thaw cycles.

Precautions

(Mouse) Scx Antibody (C-term) is for research use only and not for use in diagnostic or therapeutic procedures.

(Mouse) Scx Antibody (C-term) - Protein Information

Name Scx

Function Plays an early essential role in mesoderm formation, as well as a later role in formation of somite-derived chondrogenic lineages.

Cellular Location

Nucleus {ECO:0000255|PROSITE-ProRule:PRU00981}.

Tissue Location

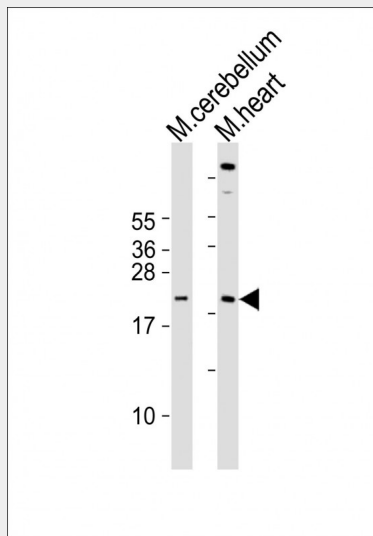
Expressed in mesenchymal precursors of cartilage and in connective tissue. Highly expressed in tendons in the limb, tongue and diaphragm and in cartilage of the bronchi

(Mouse) Scx Antibody (C-term) - Protocols

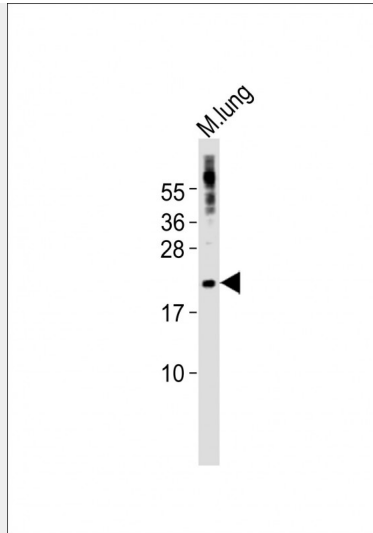
Provided below are standard protocols that you may find useful for product applications.

- [Western Blot](#)
- [Blocking Peptides](#)
- [Dot Blot](#)
- [Immunohistochemistry](#)
- [Immunofluorescence](#)
- [Immunoprecipitation](#)
- [Flow Cytometry](#)
- [Cell Culture](#)

(Mouse) Scx Antibody (C-term) - Images



All lanes : Anti-Scx Antibody (C-term) at 1:2000 dilution Lane 1: mouse cerebellum lysates Lane 2: mouse heart lysates Lysates/proteins at 20 μ g per lane. Secondary Goat Anti-Rabbit IgG, (H+L), Peroxidase conjugated at 1/10000 dilution Predicted band size : 22 kDa Blocking/Dilution buffer: 5% NFD/MTBST.



Anti-Scx Antibody (C-term) at 1:1000 dilution + mouse lung lysates Lysates/proteins at 20 µg per lane. Secondary Goat Anti-Rabbit IgG, (H+L), Peroxidase conjugated at 1/10000 dilution Predicted band size : 22 kDa Blocking/Dilution buffer: 5% NFDM/TBST.

(Mouse) Scx Antibody (C-term) - Background

Plays an early essential role in mesoderm formation, as well as a later role in formation of somite-derived chondrogenic lineages.

(Mouse) Scx Antibody (C-term) - References

Cserjesi P., et al. Development 121:1099-1110(1995).
Brown D., et al. Development 126:4317-4329(1999).

(Mouse) Scx Antibody (C-term) - Citations

- [Comparative Analysis of Tenogenic Gene Expression in Tenocyte-Derived Induced Pluripotent Stem Cells and Bone Marrow-Derived Mesenchymal Stem Cells in Response to Biochemical and Biomechanical Stimuli](#)