

**MLF1 Antibody (C-term)**  
**Purified Rabbit Polyclonal Antibody (Pab)**  
**Catalog # AP21309b****Specification**

---

**MLF1 Antibody (C-term) - Product Information**

Application	<b>WB,E</b>
Primary Accession	<a href="#">P58340</a>
Reactivity	<b>Human</b>
Host	<b>Rabbit</b>
Clonality	<b>polyclonal</b>
Isotype	<b>Rabbit IgG</b>
Calculated MW	<b>30627</b>

**MLF1 Antibody (C-term) - Additional Information****Gene ID** 4291**Other Names**

Myeloid leukemia factor 1, Myelodysplasia-myeloid leukemia factor 1, MLF1

**Target/Specificity**

This MLF1 antibody is generated from a rabbit immunized with a KLH conjugated synthetic peptide between 232-266 amino acids from the C-terminal region of human MLF1.

**Dilution**

WB~~1:2000

**Format**

Purified polyclonal antibody supplied in PBS with 0.09% (W/V) sodium azide. This antibody is purified through a protein A column, followed by peptide affinity purification.

**Storage**

Maintain refrigerated at 2-8°C for up to 2 weeks. For long term storage store at -20°C in small aliquots to prevent freeze-thaw cycles.

**Precautions**

MLF1 Antibody (C-term) is for research use only and not for use in diagnostic or therapeutic procedures.

**MLF1 Antibody (C-term) - Protein Information****Name** MLF1**Function** Involved in lineage commitment of primary hemopoietic progenitors by restricting erythroid formation and enhancing myeloid formation. Interferes with erythropoietin-induced erythroid terminal differentiation by preventing cells from exiting the cell cycle through suppression of CDKN1B/p27Kip1 levels. Suppresses COP1 activity via CSN3 which activates p53

and induces cell cycle arrest. Binds DNA and affects the expression of a number of genes so may function as a transcription factor in the nucleus.

#### Cellular Location

Cytoplasm {ECO:0000250|UniProtKB:Q9QWV4}. Nucleus {ECO:0000250|UniProtKB:Q9QWV4}. Cell projection, cilium {ECO:0000250|UniProtKB:Q9QWV4}. Cytoplasm, cytoskeleton, cilium basal body {ECO:0000250|UniProtKB:Q9QWV4}. Note=Shuttles between the cytoplasm and nucleus. {ECO:0000250|UniProtKB:Q9QWV4}

#### Tissue Location

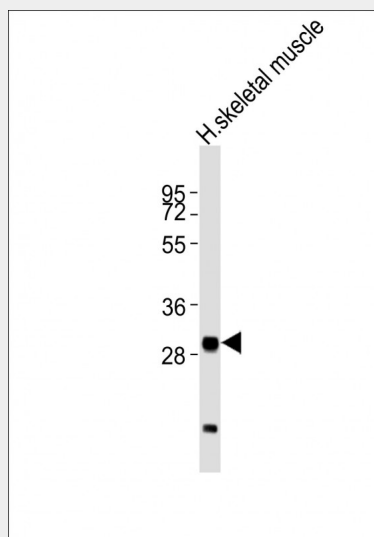
Most abundant in testis, ovary, skeletal muscle, heart, kidney and colon. Low expression in spleen, thymus and peripheral blood leukocytes

### MLF1 Antibody (C-term) - Protocols

Provided below are standard protocols that you may find useful for product applications.

- [Western Blot](#)
- [Blocking Peptides](#)
- [Dot Blot](#)
- [Immunohistochemistry](#)
- [Immunofluorescence](#)
- [Immunoprecipitation](#)
- [Flow Cytometry](#)
- [Cell Culture](#)

### MLF1 Antibody (C-term) - Images



Anti-MLF1 Antibody (C-term) at 1:2000 dilution + human skeletal muscle lysates Lysates/proteins at 20 µg per lane. Secondary Goat Anti-Rabbit IgG, (H+L), Peroxidase conjugated at 1/10000 dilution Predicted band size : 31 kDa Blocking/Dilution buffer: 5% NFD/MTBST.

### MLF1 Antibody (C-term) - Background

Involved in lineage commitment of primary hemopoietic progenitors by restricting erythroid formation and enhancing myeloid formation. Interferes with erythropoietin-induced erythroid terminal differentiation by preventing cells from exiting the cell cycle through suppression of

CDKN1B/p27Kip1 levels. Suppresses RFWD2/COP1 activity via CSN3 which activates p53 and induces cell cycle arrest. Binds DNA and affects the expression of a number of genes so may function as a transcription factor in the nucleus.

#### **MLF1 Antibody (C-term) - References**

Yoneda-Kato N., et al. *Oncogene* 12:265-275(1996).

Feng X., et al. Submitted (DEC-2004) to the EMBL/GenBank/DDBJ databases.

Ota T., et al. *Nat. Genet.* 36:40-45(2004).

Muzny D.M., et al. *Nature* 440:1194-1198(2006).

Mural R.J., et al. Submitted (SEP-2005) to the EMBL/GenBank/DDBJ databases.