

**(Mouse) Eras Antibody (C-term)**  
**Purified Rabbit Polyclonal Antibody (Pab)**  
**Catalog # AP21303b**

**Specification**

---

**(Mouse) Eras Antibody (C-term) - Product Information**

Application	WB,E
Primary Accession	<a href="#">O7TN89</a>
Reactivity	Mouse, Rat
Host	Rabbit
Clonality	polyclonal
Isotype	Rabbit IgG
Calculated MW	24321

**(Mouse) Eras Antibody (C-term) - Additional Information**

**Gene ID** 353283

**Other Names**

GTPase ERas, E-Ras, Embryonic stem cell-expressed Ras, Eras

**Target/Specificity**

This Mouse Eras antibody is generated from a rabbit immunized with a KLH conjugated synthetic peptide between 202-236 amino acids from the C-terminal region of Mouse Eras.

**Dilution**

WB~~1:2000

**Format**

Purified polyclonal antibody supplied in PBS with 0.09% (W/V) sodium azide. This antibody is purified through a protein A column, followed by peptide affinity purification.

**Storage**

Maintain refrigerated at 2-8°C for up to 2 weeks. For long term storage store at -20°C in small aliquots to prevent freeze-thaw cycles.

**Precautions**

(Mouse) Eras Antibody (C-term) is for research use only and not for use in diagnostic or therapeutic procedures.

**(Mouse) Eras Antibody (C-term) - Protein Information**

**Name** Eras

**Function** Ras proteins bind GDP/GTP and possess intrinsic GTPase activity. Plays an important role in the tumor-like growth properties of embryonic stem cells.

**Cellular Location**

Cell membrane; Lipid-anchor; Cytoplasmic side

#### Tissue Location

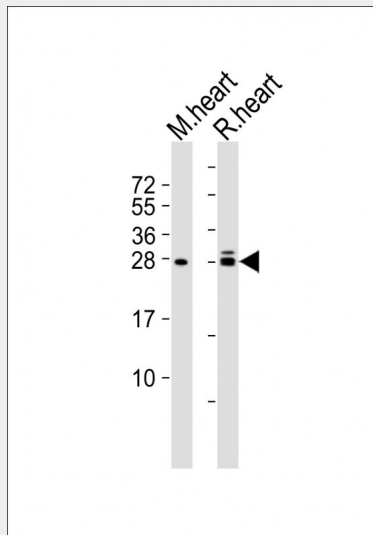
Expressed in several undifferentiated mouse embryonic stem cell lines.

#### (Mouse) Eras Antibody (C-term) - Protocols

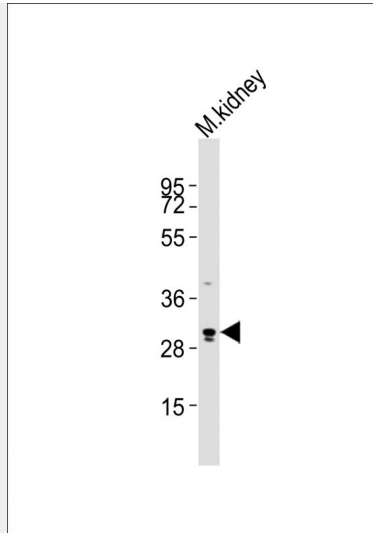
Provided below are standard protocols that you may find useful for product applications.

- [Western Blot](#)
- [Blocking Peptides](#)
- [Dot Blot](#)
- [Immunohistochemistry](#)
- [Immunofluorescence](#)
- [Immunoprecipitation](#)
- [Flow Cytometry](#)
- [Cell Culture](#)

#### (Mouse) Eras Antibody (C-term) - Images



All lanes : Anti-Eras Antibody (C-term) at 1:2000 dilution Lane 1: mouse heart lysates Lane 2: rat heart lysates Lysates/proteins at 20  $\mu$ g per lane. Secondary Goat Anti-Rabbit IgG, (H+L), Peroxidase conjugated at 1/10000 dilution Predicted band size : 24 kDa Blocking/Dilution buffer: 5% NFDM/TBST.



Anti-Eras Antibody (C-term) at 1:2000 dilution + mouse kidney lysates Lysates/proteins at 20  $\mu$ g per lane. Secondary Goat Anti-Rabbit IgG, (H+L), Peroxidase conjugated at 1/10000 dilution Predicted band size : 24 kDa Blocking/Dilution buffer: 5% NFD/MTBST.

#### **(Mouse) Eras Antibody (C-term) - Background**

Ras proteins bind GDP/GTP and possess intrinsic GTPase activity. Plays an important role in the tumor-like growth properties of embryonic stem cells.

#### **(Mouse) Eras Antibody (C-term) - References**

Takahashi K., et al. Nature 423:541-545(2003).  
Carninci P., et al. Science 309:1559-1563(2005).