

**DRD5 Antibody (C-term)**  
**Purified Rabbit Polyclonal Antibody (Pab)**  
**Catalog # AP21293b****Specification**

---

**DRD5 Antibody (C-term) - Product Information**

Application	<b>WB, FC,E</b>
Primary Accession	<a href="#">P21918</a>
Reactivity	<b>Human</b>
Host	<b>Rabbit</b>
Clonality	<b>polyclonal</b>
Isotype	<b>Rabbit IgG</b>
Calculated MW	<b>52951</b>

**DRD5 Antibody (C-term) - Additional Information****Gene ID** 1816**Other Names**

D(1B) dopamine receptor, D(5) dopamine receptor, D1beta dopamine receptor, Dopamine D5 receptor, DRD5, DRD1B, DRD1L2

**Target/Specificity**

This DRD5 antibody is generated from a rabbit immunized with a KLH conjugated synthetic peptide between 421-456 amino acids from the C-terminal region of human DRD5.

**Dilution**

WB~~1:2000

FC~~1:25

**Format**

Purified polyclonal antibody supplied in PBS with 0.09% (W/V) sodium azide. This antibody is purified through a protein A column, followed by peptide affinity purification.

**Storage**

Maintain refrigerated at 2-8°C for up to 2 weeks. For long term storage store at -20°C in small aliquots to prevent freeze-thaw cycles.

**Precautions**

DRD5 Antibody (C-term) is for research use only and not for use in diagnostic or therapeutic procedures.

**DRD5 Antibody (C-term) - Protein Information****Name** DRD5**Synonyms** DRD1B, DRD1L2

**Function** Dopamine receptor whose activity is mediated by G proteins which activate adenylyl cyclase.

**Cellular Location**

Cell membrane; Multi-pass membrane protein.

**Tissue Location**

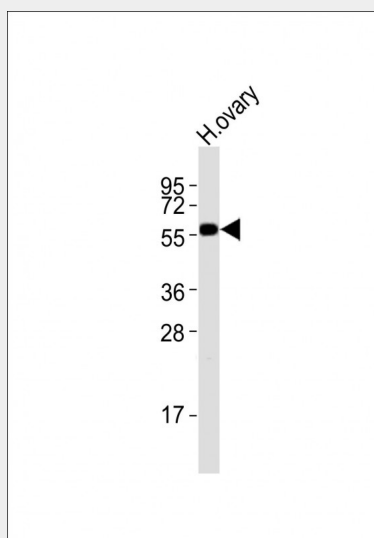
Neuron-specific, localized primarily within limbic regions of the brain.

**DRD5 Antibody (C-term) - Protocols**

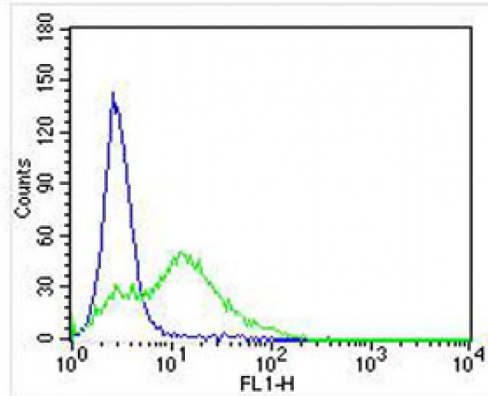
Provided below are standard protocols that you may find useful for product applications.

- [Western Blot](#)
- [Blocking Peptides](#)
- [Dot Blot](#)
- [Immunohistochemistry](#)
- [Immunofluorescence](#)
- [Immunoprecipitation](#)
- [Flow Cytometry](#)
- [Cell Culture](#)

**DRD5 Antibody (C-term) - Images**



Anti-DRD5 Antibody (C-term) at 1:2000 dilution + human ovary lysates Lysates/proteins at 20 µg per lane. Secondary Goat Anti-Rabbit IgG, (H+L), Peroxidase conjugated at 1/10000 dilution Predicted band size : 53 kDa Blocking/Dilution buffer: 5% NFDN/TBST.



Overlay histogram showing U-87 MG cells stained with AP21293b (green line). The cells were fixed with 2% paraformaldehyde (10 min) and then permeabilized with 90% methanol for 10 min. The cells were then incubated in 2% bovine serum albumin to block non-specific protein-protein interactions followed by the antibody (AP21293b, 1:25 dilution) for 60 min at 37°C. The secondary antibody used was Alexa Fluor® 488 goat anti-rabbit IgG (H+L) (1583138) at 1/400 dilution for 40 min at 37°C. Isotype control antibody (blue line) was rabbit IgG1 (1µg/1x10<sup>6</sup> cells) used under the same conditions. Acquisition of >10,000 events was performed.

#### **DRD5 Antibody (C-term) - Background**

Dopamine receptor whose activity is mediated by G proteins which activate adenylyl cyclase.

#### **DRD5 Antibody (C-term) - References**

- Sunahara R.K., et al. Nature 350:614-619(1991).
- Grandy D.K., et al. Proc. Natl. Acad. Sci. U.S.A. 88:9175-9179(1991).
- Weinshank R.L., et al. J. Biol. Chem. 266:22427-22435(1991).
- Puhl H.L. III, et al. Submitted (JUL-2002) to the EMBL/GenBank/DDBJ databases.
- Ota T., et al. Nat. Genet. 36:40-45(2004).