

**(DANRE) becn1 Antibody (C-Term)**  
**Purified Rabbit Polyclonal Antibody (Pab)**  
**Catalog # AP21289b**

**Specification**

---

**(DANRE) becn1 Antibody (C-Term) - Product Information**

Application	WB,E
Primary Accession	<a href="#">A2A135</a>
Reactivity	Zebrafish
Host	Rabbit
Clonality	polyclonal
Isotype	Rabbit IgG
Antigen Region	388-421

**(DANRE) becn1 Antibody (C-Term) - Additional Information**

**Target/Specificity**

This DANRE becn1 antibody is generated from a rabbit immunized with a KLH conjugated synthetic peptide between 388-421 amino acids from the human region of DANRE becn1.

**Dilution**

WB~~1:2000

**Format**

Purified polyclonal antibody supplied in PBS with 0.09% (W/V) sodium azide. This antibody is purified through a protein A column, followed by peptide affinity purification.

**Storage**

Maintain refrigerated at 2-8°C for up to 2 weeks. For long term storage store at -20°C in small aliquots to prevent freeze-thaw cycles.

**Precautions**

(DANRE) becn1 Antibody (C-Term) is for research use only and not for use in diagnostic or therapeutic procedures.

**(DANRE) becn1 Antibody (C-Term) - Protein Information**

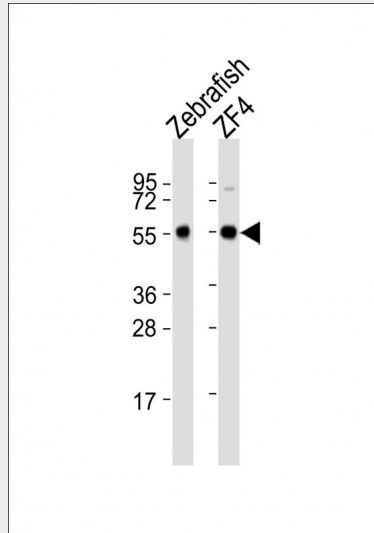
**(DANRE) becn1 Antibody (C-Term) - Protocols**

Provided below are standard protocols that you may find useful for product applications.

- [Western Blot](#)
- [Blocking Peptides](#)
- [Dot Blot](#)
- [Immunohistochemistry](#)
- [Immunofluorescence](#)

- [Immunoprecipitation](#)
- [Flow Cytometry](#)
- [Cell Culture](#)

**(DANRE) becn1 Antibody (C-Term) - Images**



All lanes : Anti-becn1 Antibody (C-Term) at 1:2000 dilution Lane 1: Zebrafish lysates Lane 2: ZF4 whole cell lysates Lysates/proteins at 20 µg per lane. Secondary Goat Anti-Rabbit IgG, (H+L), Peroxidase conjugated at 1/10000 dilution Predicted band size : 51 kDa Blocking/Dilution buffer: 5% NFDM/TBST.