

**Mouse Yes1 Antibody (Center)**  
**Purified Rabbit Polyclonal Antibody (Pab)**  
**Catalog # AP21248c**

**Specification**

---

**Mouse Yes1 Antibody (Center) - Product Information**

Application	WB,E
Primary Accession	<a href="#">Q04736</a>
Reactivity	Mouse, Rat
Host	Rabbit
Clonality	polyclonal
Isotype	Rabbit IgG
Calculated MW	60630

**Mouse Yes1 Antibody (Center) - Additional Information**

**Gene ID** 22612

**Other Names**

Tyrosine-protein kinase Yes, Proto-oncogene c-Yes, p61-Yes, Yes1, Yes

**Target/Specificity**

This Mouse Yes1 antibody is generated from a rabbit immunized with a KLH conjugated synthetic peptide between 148-182 amino acids from the Central region of Mouse Yes1.

**Dilution**

WB~~1:2000

**Format**

Purified polyclonal antibody supplied in PBS with 0.09% (W/V) sodium azide. This antibody is purified through a protein A column, followed by peptide affinity purification.

**Storage**

Maintain refrigerated at 2-8°C for up to 2 weeks. For long term storage store at -20°C in small aliquots to prevent freeze-thaw cycles.

**Precautions**

Mouse Yes1 Antibody (Center) is for research use only and not for use in diagnostic or therapeutic procedures.

**Mouse Yes1 Antibody (Center) - Protein Information**

**Name** Yes1

**Synonyms** Yes

**Function** Non-receptor protein tyrosine kinase that is involved in the regulation of cell growth and survival, apoptosis, cell-cell adhesion, cytoskeleton remodeling, and differentiation. Stimulation by

receptor tyrosine kinases (RTKs) including EGFR, PDGFR, CSF1R and FGFR leads to recruitment of YES1 to the phosphorylated receptor, and activation and phosphorylation of downstream substrates. Upon EGFR activation, promotes the phosphorylation of PARD3 to favor epithelial tight junction assembly. Participates in the phosphorylation of specific junctional components such as CTNND1 by stimulating the FYN and FER tyrosine kinases at cell-cell contacts. Upon T-cell stimulation by CXCL12, phosphorylates collapsin response mediator protein 2/DPYSL2 and induces T-cell migration. Participates in CD95L/FASLG signaling pathway and mediates AKT-mediated cell migration. Plays a role in cell cycle progression by phosphorylating the cyclin dependent kinase 4/CDK4 thus regulating the G1 phase. Also involved in G2/M progression and cytokinesis (By similarity). Catalyzes phosphorylation of organic cation transporter OCT2 which induces its transport activity (PubMed:[26979622](#)).

#### Cellular Location

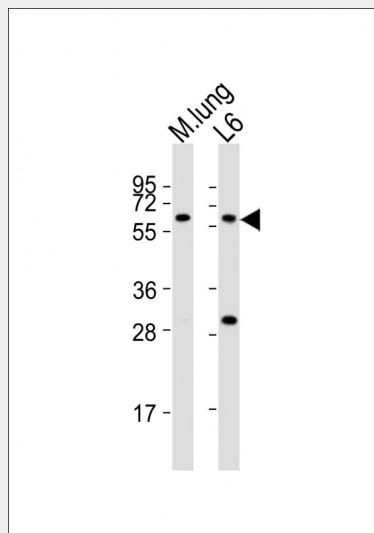
Cell membrane. Cytoplasm, cytoskeleton, microtubule organizing center, centrosome Cytoplasm, cytosol. Note=Newly synthesized protein initially accumulates in the Golgi region and traffics to the plasma membrane through the exocytic pathway.

#### Mouse Yes1 Antibody (Center) - Protocols

Provided below are standard protocols that you may find useful for product applications.

- [Western Blot](#)
- [Blocking Peptides](#)
- [Dot Blot](#)
- [Immunohistochemistry](#)
- [Immunofluorescence](#)
- [Immunoprecipitation](#)
- [Flow Cytometry](#)
- [Cell Culture](#)

#### Mouse Yes1 Antibody (Center) - Images



All lanes : Anti-Yes1 Antibody (Center) at 1:2000 dilution Lane 1: mouse lung lysates Lane 2: L6 whole cell lysates Lysates/proteins at 20 µg per lane. Secondary Goat Anti-Rabbit IgG, (H+L), Peroxidase conjugated at 1/10000 dilution Predicted band size : 61 kDa Blocking/Dilution buffer: 5% NFD/MTBST.

### **Mouse Yes1 Antibody (Center) - Background**

Non-receptor protein tyrosine kinase that is involved in the regulation of cell growth and survival, apoptosis, cell-cell adhesion, cytoskeleton remodeling, and differentiation. Stimulation by receptor tyrosine kinases (RTKs) including EGRF, PDGFR, CSF1R and FGFR leads to recruitment of YES1 to the phosphorylated receptor, and activation and phosphorylation of downstream substrates. Upon EGFR activation, promotes the phosphorylation of PARD3 to favor epithelial tight junction assembly. Participates in the phosphorylation of specific junctional components such as CTNND1 by stimulating the FYN and FER tyrosine kinases at cell-cell contacts. Upon T-cell stimulation by CXCL12, phosphorylates collapsin response mediator protein 2/DPYSL2 and induces T-cell migration. Participates in CD95L/FASLG signaling pathway and mediates AKT-mediated cell migration. Plays a role in cell cycle progression by phosphorylating the cyclin dependent kinase 4/CDK4 thus regulating the G1 phase. Also involved in G2/M progression and cytokinesis (By similarity).

### **Mouse Yes1 Antibody (Center) - References**

Klages S.,et al.Oncogene 8:713-719(1993).  
Hebert B.,et al.Gene 143:257-260(1994).  
Courtneidge S.A.,et al.EMBO J. 12:943-950(1993).  
Stein P.L.,et al.Genes Dev. 8:1999-2007(1994).  
Ariki M.,et al.J. Biochem. 121:104-111(1997).