

**(DANRE) opn1mw2 Antibody (Center)**  
**Purified Rabbit Polyclonal Antibody (Pab)**  
**Catalog # AP21236c**

## Specification

---

### (DANRE) opn1mw2 Antibody (Center) - Product Information

|                   |                        |
|-------------------|------------------------|
| Application       | WB,E                   |
| Primary Accession | <a href="#">Q8AYM8</a> |
| Reactivity        | Zebrafish              |
| Host              | Rabbit                 |
| Clonality         | polyclonal             |
| Isotype           | Rabbit IgG             |

### (DANRE) opn1mw2 Antibody (Center) - Additional Information

**Gene ID** 360151

#### Other Names

Green-sensitive opsin-2, Green cone photoreceptor pigment 2, Opsin RH2-2, Opsin-1, medium-wave-sensitive 2, opn1mw2, rh22

#### Target/Specificity

This DANRE opn1mw2 antibody is generated from a rabbit immunized with a KLH conjugated synthetic peptide between 140-171 amino acids from the Central region of DANRE opn1mw2.

#### Dilution

WB~~1:2000

#### Format

Purified polyclonal antibody supplied in PBS with 0.09% (W/V) sodium azide. This antibody is purified through a protein A column, followed by peptide affinity purification.

#### Storage

Maintain refrigerated at 2-8°C for up to 2 weeks. For long term storage store at -20°C in small aliquots to prevent freeze-thaw cycles.

#### Precautions

(DANRE) opn1mw2 Antibody (Center) is for research use only and not for use in diagnostic or therapeutic procedures.

### (DANRE) opn1mw2 Antibody (Center) - Protein Information

**Name** opn1mw2

**Synonyms** rh22

**Function** Visual pigments are the light-absorbing molecules that mediate vision. They consist of an apoprotein, opsin, covalently linked to cis-retinal.

### Cellular Location

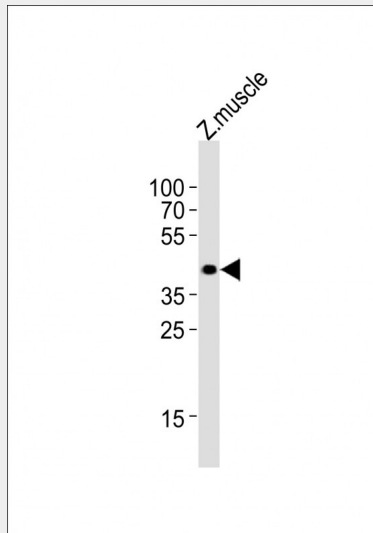
Membrane; Multi-pass membrane protein.

### (DANRE) opn1mw2 Antibody (Center) - Protocols

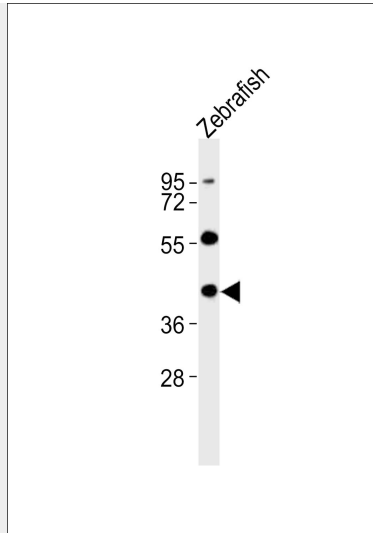
Provided below are standard protocols that you may find useful for product applications.

- [Western Blot](#)
- [Blocking Peptides](#)
- [Dot Blot](#)
- [Immunohistochemistry](#)
- [Immunofluorescence](#)
- [Immunoprecipitation](#)
- [Flow Cytometry](#)
- [Cell Culture](#)

### (DANRE) opn1mw2 Antibody (Center) - Images



Anti-opn1mw2 Antibody (Center) at 1:4000 dilution + Zebrafish muscle lysates Lysates/proteins at 20 µg per lane. Secondary Goat Anti-Rabbit IgG, (H+L), Peroxidase conjugated at 1/10000 dilution Predicted band size : 39 kDa Blocking/Dilution buffer: 5% NFDN/TBST.



Anti-opn1mw2 Antibody (Center) at 1:1000 dilution + Zebrafish lysates Lysates/proteins at 20  $\mu$ g per lane. Secondary Goat Anti-Rabbit IgG, (H+L), Peroxidase conjugated at 1/10000 dilution Predicted band size : 39 kDa Blocking/Dilution buffer: 5% NFDN/TBST.

#### **(DANRE) opn1mw2 Antibody (Center) - Background**

Visual pigments are the light-absorbing molecules that mediate vision. They consist of an apoprotein, opsin, covalently linked to cis-retinal.

#### **(DANRE) opn1mw2 Antibody (Center) - References**

Chinen A., et al. Genetics 163:663-675(2003).