

**SMAD2 Antibody (N-term)**  
**Purified Rabbit Polyclonal Antibody (Pab)**  
**Catalog # AP21228a**

**Specification**

---

**SMAD2 Antibody (N-term) - Product Information**

Application	<b>WB,E</b>
Primary Accession	<a href="#">Q15796</a>
Reactivity	<b>Mouse</b>
Host	<b>Rabbit</b>
Clonality	<b>polyclonal</b>
Isotype	<b>Rabbit IgG</b>
Calculated MW	<b>52306</b>

**SMAD2 Antibody (N-term) - Additional Information**

**Gene ID** 4087

**Target/Specificity**

This SMAD2 antibody is generated from a rabbit immunized with a KLH conjugated synthetic peptide between 106-140 amino acids from the N-terminal region of human SMAD2.

**Dilution**

WB~~1:1000

**Format**

Purified polyclonal antibody supplied in PBS with 0.09% (W/V) sodium azide. This antibody is purified through a protein A column, followed by peptide affinity purification.

**Storage**

Maintain refrigerated at 2-8°C for up to 2 weeks. For long term storage store at -20°C in small aliquots to prevent freeze-thaw cycles.

**Precautions**

SMAD2 Antibody (N-term) is for research use only and not for use in diagnostic or therapeutic procedures.

**SMAD2 Antibody (N-term) - Protein Information**

**Name** SMAD2

**Synonyms** MADH2, MADR2

**Function** Receptor-regulated SMAD (R-SMAD) that is an intracellular signal transducer and transcriptional modulator activated by TGF-beta (transforming growth factor) and activin type 1 receptor kinases. Binds the TRE element in the promoter region of many genes that are regulated by TGF-beta and, on formation of the SMAD2/SMAD4 complex, activates transcription. Promotes TGFβ1-mediated transcription of odontoblastic differentiation genes in dental papilla cells (By

similarity). Positively regulates PDPK1 kinase activity by stimulating its dissociation from the 14-3-3 protein YWHAQ which acts as a negative regulator. May act as a tumor suppressor in colorectal carcinoma (PubMed:[8752209](#)).

#### Cellular Location

Cytoplasm. Nucleus. Note=Cytoplasmic and nuclear in the absence of TGF-beta. On TGF-beta stimulation, migrates to the nucleus when complexed with SMAD4 or with IPO7 (PubMed:21145499, PubMed:9865696). On dephosphorylation by phosphatase PPM1A, released from the SMAD2/SMAD4 complex, and exported out of the nucleus by interaction with RANBP1 (PubMed:16751101, PubMed:19289081). Localized mainly to the nucleus in the early stages of embryo development with expression becoming evident in the cytoplasm at the blastocyst and epiblast stages (By similarity). {ECO:0000250|UniProtKB:Q62432, ECO:0000269|PubMed:16751101, ECO:0000269|PubMed:19289081, ECO:0000269|PubMed:21145499, ECO:0000269|PubMed:9865696}

#### Tissue Location

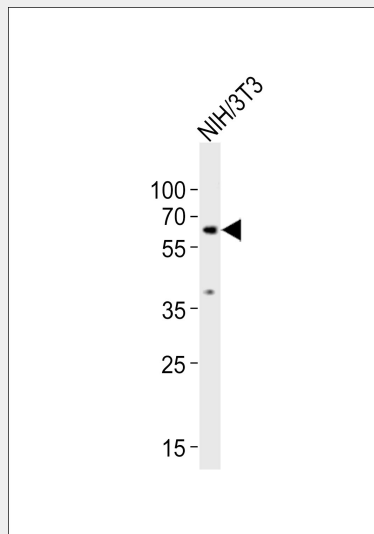
Expressed at high levels in skeletal muscle, endothelial cells, heart and placenta.

### SMAD2 Antibody (N-term) - Protocols

Provided below are standard protocols that you may find useful for product applications.

- [Western Blot](#)
- [Blocking Peptides](#)
- [Dot Blot](#)
- [Immunohistochemistry](#)
- [Immunofluorescence](#)
- [Immunoprecipitation](#)
- [Flow Cytometry](#)
- [Cell Culture](#)

### SMAD2 Antibody (N-term) - Images



Anti-SMAD2 Antibody (N-term) at 1:1000 dilution + NIH/3T3 whole cell lysates Lysates/proteins at 20 µg per lane. Secondary Goat Anti-Rabbit IgG, (H+L), Peroxidase conjugated at 1/10000 dilution Predicted band size : 52 kDa Blocking/Dilution buffer: 5% NFDN/TBST.