

NPY5R Antibody (Center)
Purified Rabbit Polyclonal Antibody (Pab)
Catalog # AP21217c

Specification

NPY5R Antibody (Center) - Product Information

| | |
|-------------------|------------------------|
| Application | WB,E |
| Primary Accession | Q15761 |
| Reactivity | Human |
| Host | Rabbit |
| Clonality | polyclonal |
| Isotype | Rabbit IgG |
| Calculated MW | 50727 |

NPY5R Antibody (Center) - Additional Information

Gene ID 4889

Other Names

Neuropeptide Y receptor type 5, NPY5-R, NPY-Y5 receptor, NPY5-R, Y5 receptor, NPY5R, NPYR5

Target/Specificity

This NPY5R antibody is generated from a rabbit immunized with a KLH conjugated synthetic peptide between 305-341 amino acids from the Central region of human NPY5R.

Dilution

WB~~1:2000

Format

Purified polyclonal antibody supplied in PBS with 0.09% (W/V) sodium azide. This antibody is purified through a protein A column, followed by peptide affinity purification.

Storage

Maintain refrigerated at 2-8°C for up to 2 weeks. For long term storage store at -20°C in small aliquots to prevent freeze-thaw cycles.

Precautions

NPY5R Antibody (Center) is for research use only and not for use in diagnostic or therapeutic procedures.

NPY5R Antibody (Center) - Protein Information

Name NPY5R

Synonyms NPYR5

Function Receptor for neuropeptide Y and peptide YY. The activity of this receptor is mediated by G proteins that inhibit adenylate cyclase activity. Seems to be associated with food intake. Could

be involved in feeding disorders.

Cellular Location

Cell membrane; Multi-pass membrane protein.

Tissue Location

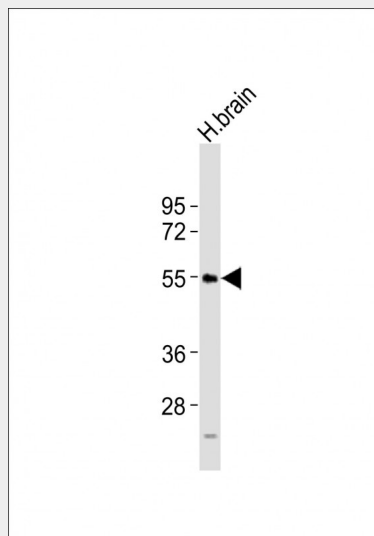
Brain; hypothalamus.

NPY5R Antibody (Center) - Protocols

Provided below are standard protocols that you may find useful for product applications.

- [Western Blot](#)
- [Blocking Peptides](#)
- [Dot Blot](#)
- [Immunohistochemistry](#)
- [Immunofluorescence](#)
- [Immunoprecipitation](#)
- [Flow Cytometry](#)
- [Cell Culture](#)

NPY5R Antibody (Center) - Images



Anti-NPY5R Antibody (Center) at 1:2000 dilution + H. brain tissue lysates Lysates/proteins at 20 μ g per lane. Secondary Goat Anti-Rabbit IgG, (H+L), Peroxidase conjugated at 1/10000 dilution Predicted band size : 51 kDa Blocking/Dilution buffer: 5% NFDm/TBST.

NPY5R Antibody (Center) - Background

Receptor for neuropeptide Y and peptide YY. The activity of this receptor is mediated by G proteins that inhibit adenylate cyclase activity. Seems to be associated with food intake. Could be involved in feeding disorders.

NPY5R Antibody (Center) - References

Hu Y.,et al.J. Biol. Chem. 271:26315-26319(1996).
Gerald C.,et al.Nature 382:168-171(1996).

Herzog H.,et al.Genomics 41:315-319(1997).
Kopatz S.A.,et al.Submitted (JUN-2003) to the EMBL/GenBank/DDBJ databases.
Hillier L.W.,et al.Nature 434:724-731(2005).