

**(DANRE) tmem208 Antibody (Center)**  
**Purified Rabbit Polyclonal Antibody (Pab)**  
**Catalog # AP21214c**

**Specification**

---

**(DANRE) tmem208 Antibody (Center) - Product Information**

Application	WB,E
Primary Accession	<a href="#">Q6NYP0</a>
Reactivity	Zebrafish
Host	Rabbit
Clonality	polyclonal
Isotype	Rabbit IgG
Calculated MW	20034
Antigen Region	92-124

**(DANRE) tmem208 Antibody (Center) - Additional Information**

**Gene ID** 404632

**Other Names**

Transmembrane protein 208, tmem208

**Target/Specificity**

This DANRE tmem208 antibody is generated from a rabbit immunized with a KLH conjugated synthetic peptide between 92-124 amino acids from the Central region of DANRE tmem208.

**Dilution**

WB~~1:2000

**Format**

Purified polyclonal antibody supplied in PBS with 0.09% (W/V) sodium azide. This antibody is purified through a protein A column, followed by peptide affinity purification.

**Storage**

Maintain refrigerated at 2-8°C for up to 2 weeks. For long term storage store at -20°C in small aliquots to prevent freeze-thaw cycles.

**Precautions**

(DANRE) tmem208 Antibody (Center) is for research use only and not for use in diagnostic or therapeutic procedures.

**(DANRE) tmem208 Antibody (Center) - Protein Information**

**Name** tmem208

**Function** May function as a negative regulator of endoplasmic reticulum-stress induced autophagy.

### Cellular Location

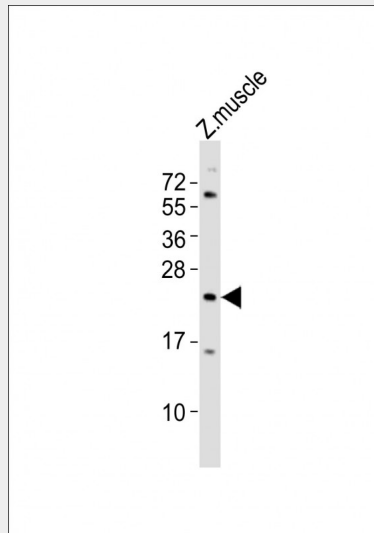
Endoplasmic reticulum membrane; Multi-pass membrane protein

### (DANRE) tmem208 Antibody (Center) - Protocols

Provided below are standard protocols that you may find useful for product applications.

- [Western Blot](#)
- [Blocking Peptides](#)
- [Dot Blot](#)
- [Immunohistochemistry](#)
- [Immunofluorescence](#)
- [Immunoprecipitation](#)
- [Flow Cytometry](#)
- [Cell Culture](#)

### (DANRE) tmem208 Antibody (Center) - Images



Anti-tmem208 Antibody (Center) at 1:2000 dilution + Zebrafish muscle lysates Lysates/proteins at 20 µg per lane. Secondary Goat Anti-Rabbit IgG, (H+L), Peroxidase conjugated at 1/10000 dilution Predicted band size : 20 kDa Blocking/Dilution buffer: 5% NFDM/TBST.

### (DANRE) tmem208 Antibody (Center) - Background

May function as a negative regulator of endoplasmic reticulum-stress induced autophagy.