

**UBE2L6 Antibody (N-term)**  
**Purified Rabbit Polyclonal Antibody (Pab)**  
**Catalog # AP2118a****Specification**

---

**UBE2L6 Antibody (N-term) - Product Information**

Application	<b>WB, IHC-P,E</b>
Primary Accession	<a href="#">O14933</a>
Other Accession	<a href="#">NP_937826</a>
Reactivity	<b>Human</b>
Host	<b>Rabbit</b>
Clonality	<b>Polyclonal</b>
Isotype	<b>Rabbit IgG</b>
Antigen Region	<b>1-30</b>

**UBE2L6 Antibody (N-term) - Additional Information****Gene ID** 9246**Other Names**

Ubiquitin/ISG15-conjugating enzyme E2 L6, Retinoic acid-induced gene B protein, RIG-B, Ubch8, Ubiquitin carrier protein L6, Ubiquitin-protein ligase L6, UBE2L6, UBCH8

**Target/Specificity**

This UBE2L6 antibody is generated from rabbits immunized with a KLH conjugated synthetic peptide between 1-30 amino acids from the N-terminal region of human UBE2L6.

**Dilution**WB~~1:1000  
IHC-P~~1:50~100**Format**

Purified polyclonal antibody supplied in PBS with 0.09% (W/V) sodium azide. This antibody is prepared by Saturated Ammonium Sulfate (SAS) precipitation followed by dialysis against PBS.

**Storage**

Maintain refrigerated at 2-8°C for up to 2 weeks. For long term storage store at -20°C in small aliquots to prevent freeze-thaw cycles.

**Precautions**

UBE2L6 Antibody (N-term) is for research use only and not for use in diagnostic or therapeutic procedures.

**UBE2L6 Antibody (N-term) - Protein Information****Name** UBE2L6**Synonyms** UBCH8

**Function** Catalyzes the covalent attachment of ubiquitin or ISG15 to other proteins. Functions in the E6/E6-AP-induced ubiquitination of p53/TP53. Promotes ubiquitination and subsequent proteasomal degradation of FLT3.

**Tissue Location**

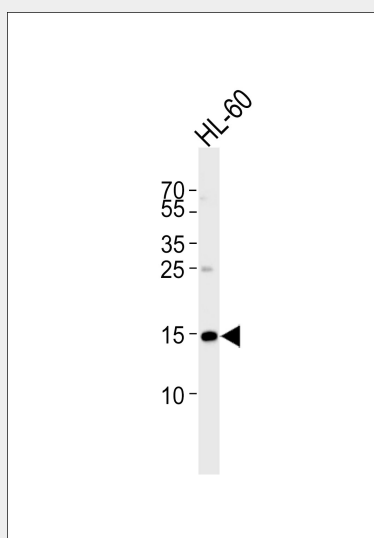
Present in natural killer cells (at protein level).

**UBE2L6 Antibody (N-term) - Protocols**

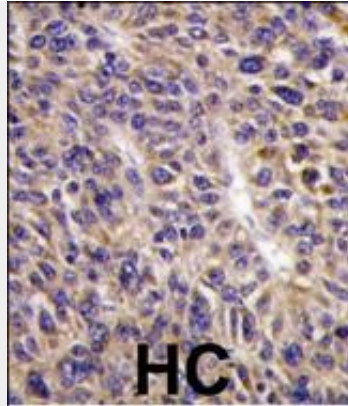
Provided below are standard protocols that you may find useful for product applications.

- [Western Blot](#)
- [Blocking Peptides](#)
- [Dot Blot](#)
- [Immunohistochemistry](#)
- [Immunofluorescence](#)
- [Immunoprecipitation](#)
- [Flow Cytometry](#)
- [Cell Culture](#)

**UBE2L6 Antibody (N-term) - Images**



Western blot analysis of lysate from HL-60 cell line, using UBE2L6 Antibody (M1) (Cat. #AP2118A). AP2118A was diluted at 1:1000. A goat anti-rabbit IgG H&L(HRP) at 1:5000 dilution was used as the secondary antibody. Lysate at 35ug.



Formalin-fixed and paraffin-embedded human hepatocarcinoma reacted with UBE2L6 Antibody (N-term)(Cat.#AP2118a), which was peroxidase-conjugated to the secondary antibody, followed by DAB staining. This data demonstrates the use of this antibody for immunohistochemistry; clinical relevance has not been evaluated.

#### **UBE2L6 Antibody (N-term) - Background**

The modification of proteins with ubiquitin is an important cellular mechanism for targeting abnormal or short-lived proteins for degradation. Ubiquitination involves at least three classes of enzymes: ubiquitin-activating enzymes (E1s), ubiquitin-conjugating enzymes (E2s) and ubiquitin-protein ligases (E3s). UBE2L6 is a member of the E2 ubiquitin-conjugating enzyme family. This enzyme is demonstrated to function in the E6/E6-ap-induced ubiquitination of p53.

#### **UBE2L6 Antibody (N-term) - References**

Kumar, S., et al., J. Biol. Chem. 272(21):13548-13554 (1997).  
Ardley, H.C., et al., Cytogenet. Cell Genet. 89 (1-2), 137-140 (2000).

#### **UBE2L6 Antibody (N-term) - Citations**

- [Inhibition of UBE2L6 attenuates ISGylation and impedes ATRA-induced differentiation of leukemic cells](#)
- [Bortezomib Causes ER Stress-related Death of Acute Promyelocytic Leukemia Cells Through Excessive Accumulation of PML-RARA.](#)
- [Interferon-induced ISG15 conjugation inhibits influenza A virus gene expression and replication in human cells.](#)
- [TSA downregulates Wilms tumor gene 1 \(Wt1\) expression at multiple levels.](#)