

SPTAN1 Antibody (Center)
Purified Rabbit Polyclonal Antibody (Pab)
Catalog # AP21186c

Specification

SPTAN1 Antibody (Center) - Product Information

Application	WB,E
Primary Accession	Q13813
Reactivity	Human, Mouse, Rat
Host	Rabbit
Clonality	polyclonal
Isotype	Rabbit IgG
Calculated MW	284539

SPTAN1 Antibody (Center) - Additional Information

Gene ID 6709

Other Names

Spectrin alpha chain, non-erythrocytic 1, Alpha-II spectrin, Fodrin alpha chain, Spectrin, non-erythroid alpha subunit, SPTAN1, NEAS, SPTA2

Target/Specificity

This SPTAN1 antibody is generated from a rabbit immunized with a KLH conjugated synthetic peptide between 977-991 amino acids from the Central region of human SPTAN1.

Dilution

WB~~1:2000

Format

Purified polyclonal antibody supplied in PBS with 0.09% (W/V) sodium azide. This antibody is purified through a protein A column, followed by peptide affinity purification.

Storage

Maintain refrigerated at 2-8°C for up to 2 weeks. For long term storage store at -20°C in small aliquots to prevent freeze-thaw cycles.

Precautions

SPTAN1 Antibody (Center) is for research use only and not for use in diagnostic or therapeutic procedures.

SPTAN1 Antibody (Center) - Protein Information

Name SPTAN1

Synonyms NEAS, SPTA2

Function Fodrin, which seems to be involved in secretion, interacts with calmodulin in a

calcium-dependent manner and is thus candidate for the calcium-dependent movement of the cytoskeleton at the membrane.

Cellular Location

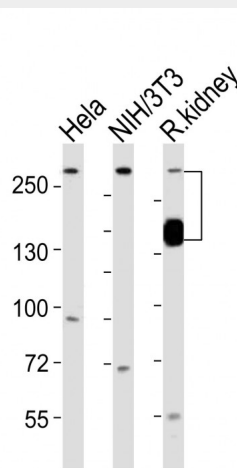
Cytoplasm, cytoskeleton. Cytoplasm, cell cortex. Note=Expressed along the cell membrane in podocytes and presumptive tubule cells during glomerulogenesis and is expressed along lateral cell margins in tubule cells.

SPTAN1 Antibody (Center) - Protocols

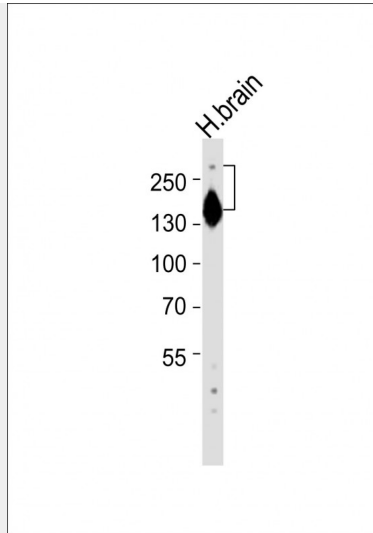
Provided below are standard protocols that you may find useful for product applications.

- [Western Blot](#)
- [Blocking Peptides](#)
- [Dot Blot](#)
- [Immunohistochemistry](#)
- [Immunofluorescence](#)
- [Immunoprecipitation](#)
- [Flow Cytometry](#)
- [Cell Culture](#)

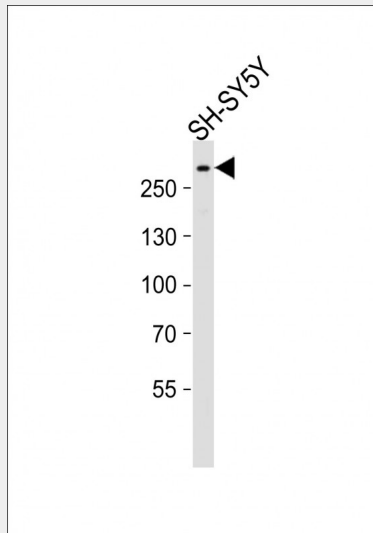
SPTAN1 Antibody (Center) - Images



All lanes : Anti-SPTAN1 Antibody (Center) at 1:1000 dilution Lane 1: HeLa whole cell lysates Lane 2: NIH/3T3 whole cell lysates Lane 3: rat kidney lysates Lysates/proteins at 20 µg per lane. Secondary Goat Anti-Rabbit IgG, (H+L), Peroxidase conjugated at 1/10000 dilution Predicted band size : 285 kDa Blocking/Dilution buffer: 5% NFDM/TBST.



Anti-SPTAN1 Antibody (Center) at 1:2000 dilution + human brain lysates Lysates/proteins at 20 μ g per lane. Secondary Goat Anti-Rabbit IgG, (H+L), Peroxidase conjugated at 1/10000 dilution Predicted band size : 285 kDa Blocking/Dilution buffer: 5% NFDN/TBST.



Anti-SPTAN1 Antibody (Center) at 1:2000 dilution + SH-SY5Y whole cell lysates Lysates/proteins at 20 μ g per lane. Secondary Goat Anti-Rabbit IgG, (H+L), Peroxidase conjugated at 1/10000 dilution Predicted band size : 285 kDa Blocking/Dilution buffer: 5% NFDN/TBST.

SPTAN1 Antibody (Center) - Background

Fodrin, which seems to be involved in secretion, interacts with calmodulin in a calcium-dependent manner and is thus candidate for the calcium-dependent movement of the cytoskeleton at the membrane.

SPTAN1 Antibody (Center) - References

- Moon R.T.,et al.J. Biol. Chem. 265:4427-4433(1990).
- Cianci C.D.,et al.Biochemistry 38:15721-15730(1999).
- Kato S.,et al.Submitted (SEP-2004) to the EMBL/GenBank/DDBJ databases.
- Totoki Y.,et al.Submitted (MAR-2005) to the EMBL/GenBank/DDBJ databases.
- Humphray S.J.,et al.Nature 429:369-374(2004).