

SSTR1 Antibody (C-term)
Purified Rabbit Polyclonal Antibody (Pab)
Catalog # AP21173a

Specification

SSTR1 Antibody (C-term) - Product Information

Application	WB,E
Primary Accession	P30872
Reactivity	Human
Host	Rabbit
Clonality	polyclonal
Isotype	Rabbit IgG
Calculated MW	42686

SSTR1 Antibody (C-term) - Additional Information

Gene ID 6751

Other Names

Somatostatin receptor type 1, SS-1-R, SS1-R, SS1R, SRIF-2, SSTR1

Target/Specificity

This SSTR1 antibody is generated from a rabbit immunized with a KLH conjugated synthetic peptide between 367-403 amino acids from the C-terminal region of human SSTR1.

Dilution

WB~~1:4000

Format

Purified polyclonal antibody supplied in PBS with 0.09% (W/V) sodium azide. This antibody is purified through a protein A column, followed by peptide affinity purification.

Storage

Maintain refrigerated at 2-8°C for up to 2 weeks. For long term storage store at -20°C in small aliquots to prevent freeze-thaw cycles.

Precautions

SSTR1 Antibody (C-term) is for research use only and not for use in diagnostic or therapeutic procedures.

SSTR1 Antibody (C-term) - Protein Information

Name SSTR1

Function Receptor for somatostatin with higher affinity for somatostatin-14 than -28. This receptor is coupled via pertussis toxin sensitive G proteins to inhibition of adenylyl cyclase. In addition it stimulates phosphotyrosine phosphatase and Na(+)/H(+) exchanger via pertussis toxin insensitive G proteins.

Cellular Location

Cell membrane; Multi-pass membrane protein.

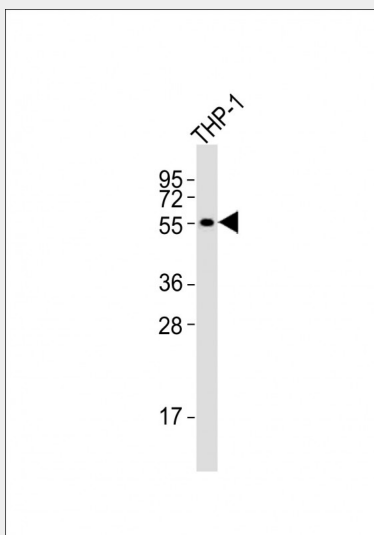
Tissue Location

Fetal kidney, fetal liver, and adult pancreas, brain, lung, jejunum and stomach

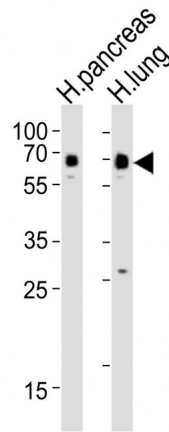
SSTR1 Antibody (C-term) - Protocols

Provided below are standard protocols that you may find useful for product applications.

- [Western Blot](#)
- [Blocking Peptides](#)
- [Dot Blot](#)
- [Immunohistochemistry](#)
- [Immunofluorescence](#)
- [Immunoprecipitation](#)
- [Flow Cytometry](#)
- [Cell Culture](#)

SSTR1 Antibody (C-term) - Images

Anti-SSTR1 Antibody (C-term) at 1:4000 dilution + THP-1 whole cell lysates Lysates/proteins at 20 μ g per lane. Secondary Goat Anti-Rabbit IgG, (H+L), Peroxidase conjugated at 1/10000 dilution
Predicted band size : 43 kDa Blocking/Dilution buffer: 5% NFDM/TBST.



All lanes : Anti-SSTR1 Antibody (C-term) at 1:4000 dilution Lane 1: human pancreas lysates Lane 2: human lung lysates Lysates/proteins at 20 µg per lane. Secondary Goat Anti-Rabbit IgG, (H+L), Peroxidase conjugated at 1/10000 dilution Predicted band size : 43 kDa Blocking/Dilution buffer: 5% NFD/MTBST.

SSTR1 Antibody (C-term) - Background

Receptor for somatostatin with higher affinity for somatostatin-14 than -28. This receptor is coupled via pertussis toxin sensitive G proteins to inhibition of adenylyl cyclase. In addition it stimulates phosphotyrosine phosphatase and Na(+)/H(+) exchanger via pertussis toxin insensitive G proteins.

SSTR1 Antibody (C-term) - References

Yamada Y.,et al.Proc. Natl. Acad. Sci. U.S.A. 89:251-255(1992).
Kopatz S.A.,et al.Submitted (JUN-2003) to the EMBL/GenBank/DDBJ databases.
Schwaerzler A.,et al.J. Biol. Chem. 275:9557-9562(2000).