

**(DANRE) Eva1a Antibody (Center)**  
**Purified Rabbit Polyclonal Antibody (Pab)**  
**Catalog # AP21171a**

**Specification**

---

**(DANRE) Eva1a Antibody (Center) - Product Information**

Application	WB,E
Primary Accession	<a href="#">Q08CB3</a>
Reactivity	Zebrafish
Host	Rabbit
Clonality	polyclonal
Isotype	Rabbit IgG
Calculated MW	17374
Antigen Region	104-137

**(DANRE) Eva1a Antibody (Center) - Additional Information**

**Gene ID** 767647

**Other Names**

Protein eva-1 homolog A, Protein FAM176A, Transmembrane protein 166, Eva1a, fam176a, tmem166

**Target/Specificity**

This DANRE Eva1a antibody is generated from a rabbit immunized with a KLH conjugated synthetic peptide between 104-137 amino acids from the Central region of DANREva1a.

**Dilution**

WB~~1:1000

**Format**

Purified polyclonal antibody supplied in PBS with 0.09% (W/V) sodium azide. This antibody is purified through a protein A column, followed by peptide affinity purification.

**Storage**

Maintain refrigerated at 2-8°C for up to 2 weeks. For long term storage store at -20°C in small aliquots to prevent freeze-thaw cycles.

**Precautions**

(DANRE) Eva1a Antibody (Center) is for research use only and not for use in diagnostic or therapeutic procedures.

**(DANRE) Eva1a Antibody (Center) - Protein Information**

**Name** Eva1a

**Synonyms** fam176a, tmem166

**Function** Acts as a regulator of programmed cell death, mediating both autophagy and apoptosis.

**Cellular Location**

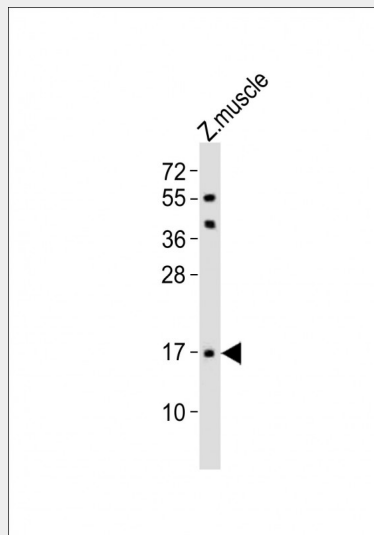
Endoplasmic reticulum membrane; Single-pass membrane protein. Lysosome membrane; Single-pass membrane protein

**(DANRE) Eva1a Antibody (Center) - Protocols**

Provided below are standard protocols that you may find useful for product applications.

- [Western Blot](#)
- [Blocking Peptides](#)
- [Dot Blot](#)
- [Immunohistochemistry](#)
- [Immunofluorescence](#)
- [Immunoprecipitation](#)
- [Flow Cytometry](#)
- [Cell Culture](#)

**(DANRE) Eva1a Antibody (Center) - Images**



Anti-(DANRE) Eva1a Antibody (Center) at 1:1000 dilution + zebrafish muscle lysates  
Lysates/proteins at 20 µg per lane. Secondary Goat Anti-Rabbit IgG, (H+L), Peroxidase conjugated  
at 1/10000 dilution Predicted band size : 17 kDa Blocking/Dilution buffer: 5% NFDM/TBST.

**(DANRE) Eva1a Antibody (Center) - Background**

Acts as a regulator of programmed cell death, mediating both autophagy and apoptosis.